

MAKING IT CRYSTAL CLEAR

5 KEY DIFFERENCES BETWEEN TVS AND PROFESSIONAL DISPLAYS

As consumer TVs and professional display products are becoming increasingly similar in design, each product has special features for specific usage. Here are the basic differences between the two:

CONSUMER TVS



Purchased by consumers for home use



Typically have a brightness rating of up to 350 cd/m²



Reduced input choices due to a need for a simple, HDMI™ or USB connection



Limited onboard cooling is designed for 6 to 8-hour usage; landscape mounting only



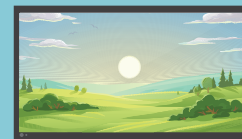
Images can “burn” on the screen if left alone for a long period of time

DEPLOYMENT

PROFESSIONAL DISPLAYS



Purchased by businesses; have a more rugged structure for high-traffic areas

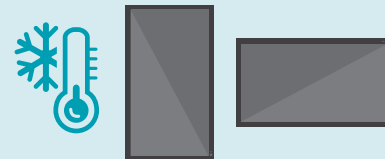


Usually range from 350 to 700 cd/m² to outshine ambient lighting



Has an RS232C input for control, plus a variety of inputs for commercial needs including VGA, DVI and DisplayPort™.

COOLING SYSTEM



Has adequate cooling system to handle 16/7 to 24/7 usage, plus portrait and landscape mounting

IMAGE RETENTION



Has technology to protect against image retention

SHARP®

FIND DISPLAYS FOR YOUR BUSINESS AT:
[BUSINESS.SHARPU.SA.COM/COMMERCIAL-DISPLAYS](https://www.business.sharpusa.com/commercial-displays)

©2021 Sharp Electronics Corporation. All rights reserved. Sharp is a registered trademark of Sharp Corporation. HDMI is a trademark of HDMI Licensing Administrator, Inc. in the United States and other countries. DisplayPort is a trademark owned by the Video Electronics Standards Association in the United States and other countries.™