

SHARP[®]

AirPrint Guide

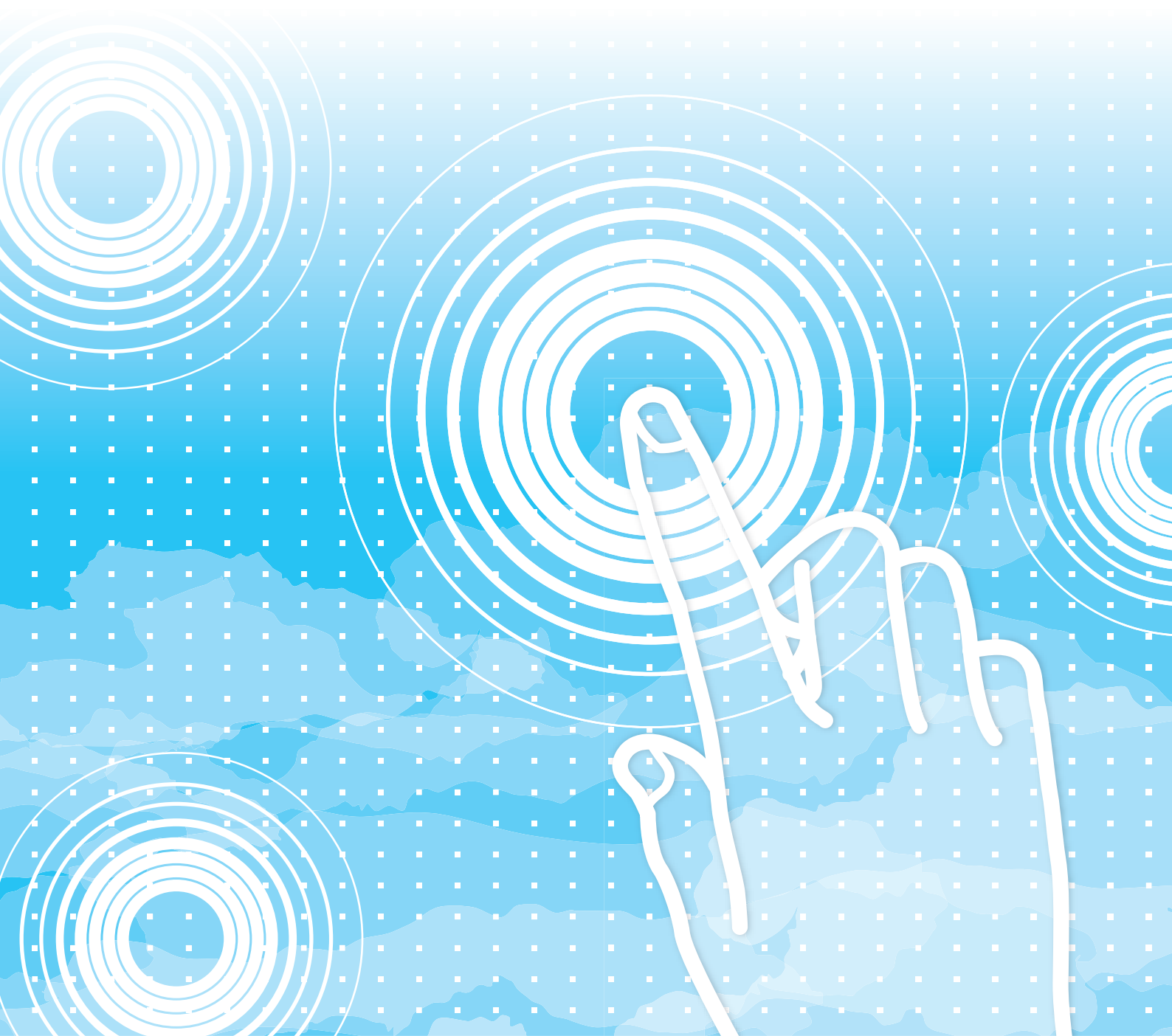


TABLE OF CONTENTS

ABOUT THIS GUIDE	2
AirPrint	3
• Before using AirPrint	3
• Using AirPrint to print	3
• Using AirPrint to send a fax	4
• Using AirPrint to send a scanned document	4
AirPrint Settings	5

ABOUT THIS GUIDE

This guide explains how to use AirPrint.

Please note

- Wherever "MX-xxxx" appears in this guide, please substitute your model name for "xxxx".
- This guide does not provide detailed explanations of the functions of the machine. For detailed information on the names and functions that appear in this guide, see the User's Manual.
- Considerable care has been taken in preparing this manual. If you have any comments or concerns about the manual, please contact your dealer or nearest authorized service representative.
- This product has undergone strict quality control and inspection procedures. In the unlikely event that a defect or other problem is discovered, please contact your dealer or nearest authorized service representative.
- Aside from instances provided for by law, SHARP is not responsible for failures occurring during the use of the product or its options, or failures due to incorrect operation of the product and its options, or other failures, or for any damage that occurs due to use of the product.

Warning

- Reproduction, adaptation or translation of the contents of the manual without prior written permission is prohibited, except as allowed under copyright laws.
- All information in this manual is subject to change without notice.

Illustrations, operation panel, touch panel, and Web pages in this guide

The peripheral devices are generally optional, however, some models include certain peripheral devices as standard equipment. For some functions and procedures, the explanations assume that devices other than the above are installed. Depending on the content, and depending on the model and what peripheral devices are installed, this may not be usable. For details, refer to the User's Manual.

The explanations in this manual are based on American English and the North American version of the software. Software for other countries and regions may vary slightly from the North American version.

- The display screens, messages, and key names shown in the manual may differ from those on the actual machine due to product improvements and modifications.
- The touch panel, illustrations, and setting screens in this manual are for reference only, and may vary by model, installed options, settings changed from the default state, and country or region.
- Details of system settings as well as settings methods may differ depending on the model.
- This manual assumes that a full-color machine is being used. Some of the explanations may not apply to a monochrome machine.

AirPrint

Data can be selected from applications supporting AirPrint, and then printed through the machine, sent as a fax, or scanned.



- Please note that details of support will differ between macOS (Mac) and iOS (iPhone/iPad).
- macOS (Mac)
Print/fax/send from macOS is available using AirPrint support on the machine.
- iOS (iPhone/iPad)
Print only from iOS is available using AirPrint support on the machine.
- Depending on the model, a PS expansion kit may be required in order to use AirPrint.



To enable AirPrint

In "Settings (administrator)", select [System Settings] → [Network Settings] → [External Print Services Settings] → [AirPrint Settings].

▶ [AirPrint Settings \(page 5\)](#)

Before using AirPrint

To use AirPrint on macOS, you must first register the machine's information in your device.

Advance settings are not necessary to use AirPrint on iOS.

Enable AirPrint in the machine's settings, and also enable AirPrint on your device.

(1) Click [Printers & Scanners] ([Print & Scan]) in System Preferences.

(2) Click the [+] button.

(3) Select the name of the machine from the list, select [AirPrint] ([Secure AirPrint]) from the drivers, and click [Add].

Setup starts, and the machine can be used with AirPrint.

Using AirPrint to print

The printing procedure depends on the application. The procedure for printing a Web page viewed in the iOS version of Safari is explained below as an example.

(1) Open the page that you want to print in Safari.

Use the commands in Safari to open the page you want to print.

(2) Tap .

(3) Tap [Print].

The menu appears. Tap [Print].

(4) Select the printer.

AirPrint compatible printers on the same network as the device are shown. Select the machine.

(5) Select print settings and tap [Print].

Set the number of copies and other settings as needed and tap [Print].



- When you send the print job with a PIN code from your device, the print job is saved in the main folder of document filing.
- The screen that appears varies depending on your OS version.
- The functions that can be used when printing with AirPrint vary depending on the OS and the application.
- To print with AirPrint when the machine's user authentication function is used, enable [Enable IPP Authentication Except for Printer Driver] in "Settings (Administrator)" → [System Settings] → [Authentication Settings] → [Default Settings].
- To print in colour, you must change the permission of "Other User" to a permission that allows colour printing.

Using AirPrint to send a fax

You can send a file created in an AirPrint compatible application by fax via the machine.

The sending procedure depends on the application.

Refer to the manual for the application to send a file by fax. The procedure for transmission in macOS is explained as an example.

- (1) Open the file you want to send.**
- (2) Select [Print] from [File] in the application.**
- (3) Select the machine - fax in [Printer].**
- (4) Enter the fax number in the address. When finished selecting settings, click [Fax].**

Fax transmission starts.



- AirPrint can be used to send a fax even when [Disable PC-Fax Transmission] is enabled.
 - Fax jobs sent using AirPrint are managed in the same way as resend jobs in Document Filing.
 - To send a fax with AirPrint when the machine's user authentication function is used, enable [Enable IPP Authentication Except for Printer Driver] in "Settings (Administrator)" → [System Settings] → [Authentication Settings] → [Default Settings].
-

Using AirPrint to send a scanned document

You can scan a document on the machine using an AirPrint-compatible application, and send the scanned document to a device.

The sending procedure depends on the application.

Refer to the manual for the application to send a scanned document. The procedure for scanning in macOS is explained here as an example.

- (1) Place the original.**
- (2) Click [Printers & Scanners] ([Print & Scan]) in System Preferences.**
- (3) Select the machine from the "Printer" list, click [Scan], and click [Open Scanner].**
- (4) When you have finished selecting settings, click [Scan].**

Scanning starts.



- To send a document using AirPrint, the machine must be in one of the following states:
 - Login screen displayed, home screen displayed, brightness adjustment screen displayed, display language being set, home being edited, custom display pattern being set, home screen text color being changed, administrator password being entered for home edit / custom display pattern setting / home screen text color change, login name / password being entered, numbers being entered for authentication by number, login user being selected, authentication destination being selected
 - When the machine's user authentication function is used, an image scanned with AirPrint is treated as an invalid user job.
-

AirPrint Settings

Set this option to use AirPrint.

In "Settings (administrator)", select [System Settings] → [Network Settings] → [External Print Services Settings] → [AirPrint Settings].

AirPrint (Print), AirPrint (Scan), AirPrint (Fax Send)

Select these settings to use the AirPrint functions.

mDNS

Enable or disable mDNS. When mDNS is disabled, the machine will not appear in the list of printers when AirPrint is used to print.

This setting is linked to [System Settings] → [Network Settings] → [Services Settings] → [mDNS Settings] → [mDNS] in "Settings (administrator)".

IPP

Specify whether or not the IPP port of the machine is enabled. This setting is linked to [System Settings] → [Security Settings] → [Port Control] → [IPP] in "Settings (administrator)".

IPP-SSL

Specify whether or not the IPP-SSL port of the machine is enabled. This setting is linked to [System Settings] → [Security Settings] → [Port Control] → [IPP-SSL] in "Settings (administrator)".

Service Name

Set the name of the printer that appears in the application when AirPrint is used.

This setting is linked to [System Settings] → [Network Settings] → [Services Settings] → [mDNS Settings] → [Service Name] in "Settings (administrator)".

Machine Location

Enter the machine installation location information that is sent to the application when AirPrint is used.

This setting is linked to Machine Information Page in Setting mode.

geo URI (RFC 5870)

Enter the geographic location of the machine.

Enter the location information in the format specified by the geo URI standard.

Default User Name for User Authentication

If user authentication is enabled on the multifunction machine, set the device user name.

Device Status, Firmware Version, SSL Settings, Certificate Management, User List

Click each of the items to go to the settings of Device Status, Firmware Version, Setting of SSL, Certificate Management, and User List.

SHARP[®]
SHARP CORPORATION