

SHARP

ADVANCED SERIES COLOR DOCUMENT SYSTEMS

simply smarter



BP-70C55
BP-70C65



The Color Advanced Series from Sharp.

Taking organizations to the future of business communication by helping them work simply smarter.

Designed to fit today's diverse workstyles, the Advanced Series color document systems enable workers to collaborate and share information seamlessly and securely throughout their office environment. Enhanced cloud services such as Microsoft Teams makes it easy to streamline communication and boost productivity with hybrid workers.



Easy-to-use Touchscreen

The easy-to-use Sharp touchscreen display is built on an award-winning design and delivers an accurate, responsive user experience, imperative for today's sophisticated workflows.

Technology Focused on Efficiency

The Advanced Series leverages the latest technology to help users get their work done with ease and efficiency. Innovative features like multi-feed scan detection and enhanced auto skew correction ensure jobs come out right the first time, every time.

Versatile Application Integration

Maximize productivity and collaboration with easy access to expanded cloud services, quickly connect with mobile devices to print and scan files, even utilize touchless operation with the Sharp Synappx Go app.

Leading Security

In today's hybrid working environments its vital to protect endpoint devices from security threats, that is why the Advanced Series uses the latest security technology to help ensure your data remains safe.

Flexible Sleek Design

Elegant cabinet design with easy-roll casters, soft-close paper drawers and contemporary color scheme make the Advanced Series a perfect fit for any office environment.

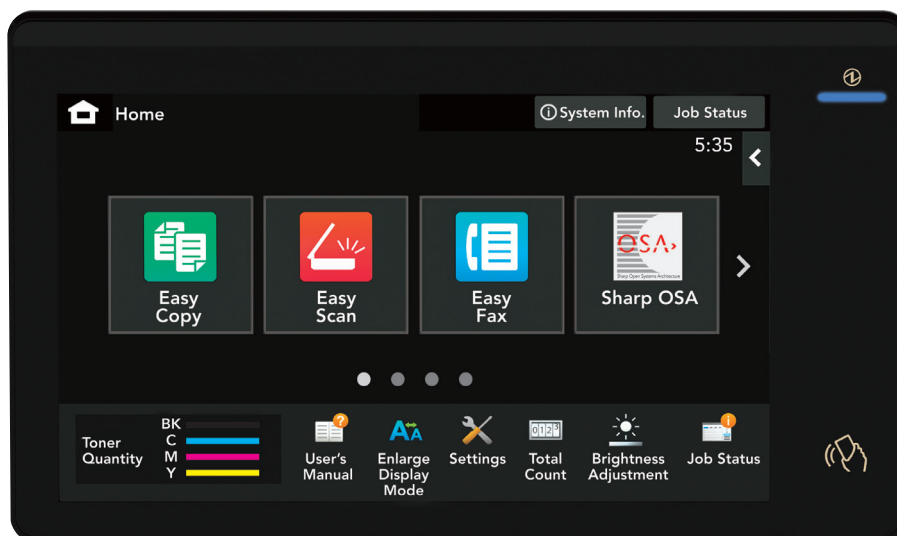
Smart features that enhance productivity and efficiency.

Streamlined workflows that are safe, secure and fit today's diverse work styles.

Work more efficiently

Collaborate better
with colleagues

Secure your document
workflows



10.1" (diagonally measured) customizable touchscreen display.



BP-70C65 shown with Inner Folding Unit, Right Side Exit Tray and 2-drawer Paper Deck.



Built-in retractable keyboard for convenient data entry.

- **300-sheet duplexing** single-pass feeder offers double feed detection and scans up to 280 images per minute.
- Flexible paper handling supports **media up to 300 gsm**, allowing users to print on a wide variety of paper stock or media.
- New Inner Folding Unit option offers a **variety of fold patterns**, including tri-fold, z-fold and others.
- **Smart controller design** ensures MFP firmware is up to date by periodically checking for updates.
- Built-in **walk-up motion sensor** automatically detects approaching users immediately wakes the machine, making it ready for use within seconds.
- **ENERGY STAR® 3.0 certified** and offers among the lowest standby power consumption in the category.
- Built-in **retractable keyboard** simplifies email address and subject line entries.
- **Enhanced touchscreen** delivers an accurate, responsive user experience and provides easy access to features.
- Collaborate with hybrid workers using **popular cloud services**, such as Microsoft Teams, Google Drive™, Dropbox and others.
- Strong, **multi-layered security** such as system integrity check at startup, firmware attack prevention and optional Bitdefender antivirus to help protect your data.
- Supports native **Universal Print from Microsoft**, enabling businesses to easily adapt to this popular cloud service.
- Pantone Licensing on these models offers unprecedented levels of color fidelity with the **PANTONE MATCHING SYSTEM®**.
- **Sharp OSA® Technology** provides a secure and intuitive user experience for integrated workflows.

Designed for today's individual workstyles.

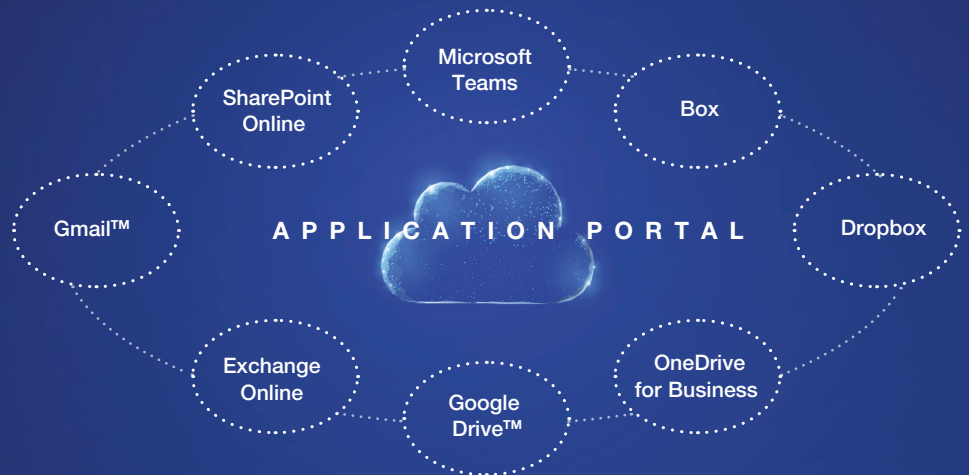
From media handling to workflow and collaboration, the Advanced Series delivers the features businesses need to get the job done.

Sharp makes it easy for businesses to execute jobs quickly, leaving more time for the actual business at hand. Scan large documents at up to 280 ipm using the 300-sheet duplexing single pass feeder that offers optional double feed detection. Image processing technology and Artificial Intelligence (AI) can automatically adjust resolution, compression as well as detect original size and adjust for skewed documents when scanning. The award-winning, tablet style touchscreen delivers an accurate, responsive experience, while menu-driven Easy Modes offer fast, simple operation

enabling users to get their copying and scanning tasks done in less time.

Print and Share Documents Easily

Seamlessly collaborate with colleagues even when they are working remotely. With **Cloud Connect**, businesses gain access to popular cloud services including Microsoft Teams, Google Drive, and others. The Sharp Application Portal makes it easy for administrators to add new apps



Integrate with Email Applications

In addition to native capability, the **Email Connect** feature enables seamless scan-to-email integration with Microsoft Exchange/365 and Gmail™ user accounts, making it easy to identify the sender of scanned files.

Intelligent Image Processing

Scan documents to popular file formats including Microsoft Word, PowerPoint and Excel, as well as Searchable PDF, Encrypted PDF and others. Direct Print the same file types from thumb drives, cloud applications and mobile devices.* **Adobe Embedded Print Engine** direct prints PDF files with greater speed and rendering accuracy.

Flexible Printing Solutions

PCL 6 and Adobe PostScript 3 printing helps users speed through their work. The 256 GB solid state drive processes jobs quickly. **Serverless Print Release** enables users to print a job and release it from up to eight supported models. Native Universal Print from Microsoft eliminates the need for on-premises infrastructure, and enables IT to manage printers directly through a centralized portal.



*This function is enabled via Qualcomm DirectOffice technology.

Smart · Connected · Secure

Integrating technology and functionality.

The Color Advanced Series document systems provide unsurpassed performance that simply adapts to your business needs.

Duplexing Single Pass Feeder (DSPF)

300-sheet document feeder scans both sides of a document in a single pass and scans up to 280 images per minute.

Smart Scan

Image processing technology and AI can automatically adjust resolution, compression, as well as detect original size and adjust for skew.

Smart Touchscreen

Enhanced touchscreen is easy to use and delivers the responsiveness and accuracy users expect.

Walk-up Motion Sensor

Detects walk-up users and wakes the machine from sleep mode, making it ready for use within seconds.

Built-in Retractable Keyboard

Full-size QWERTY keyboard enables easy data entry.

Exceptional Image Quality

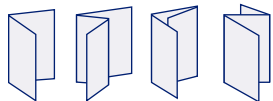
1,200 x 1,200 dpi resolution delivers razor-sharp text and graphics.

Microsoft Friendly

Native integration with Universal Print and Microsoft Teams simplifies workflow and enhances collaboration.

Advanced Finishing

Sharp gives you a variety of high-performance finishers to choose from to help complete the job on time. New inner folding unit option offers four popular folding patterns.



Half-fold Z-fold C-fold Accordion-fold

Sharp Color Consistency System

Advanced auto-calibration helps ensure color output is always at peak performance.



Flexible Paper Handling

Feed up to 300 gsm media through the paper drawers and supports up to 12" x 18" output size.

Large Capacity Cassette

Available large capacity cassette offers an additional 3,000-sheet capacity for a maximum on-line paper capacity of 6,300 sheets.



Touchless Operation

Scan, Copy and Print Release with award-winning Synappx Go app.

Advanced Multi-layer Security

Leading security features plus optional Bitdefender antivirus provide enhanced protection against network intrusions.

Easy Access to Cloud Services

Print and scan documents to popular cloud applications.

Wireless Networking

5 GHz Wi-Fi technology and WPA3™ encryption deliver fast, reliable data that helps provide strong protection from hackers.

Collaborate on-the-go with quick access to mobile devices.

The Advanced Series makes it easy to share data with tablets and smartphones even in busy office environments.



Print with Popular Mobile Technologies

The Advanced Series supports printing using popular mobile technologies such as Apple AirPrint and Android printing with the Sharp Print Service plug-in.

Advanced Wireless Networking

Print directly to the MFP from mobile devices without interfering with the corporate network! 5 GHz technology and WPA3™ Encryption deliver fast, reliable data that is well protected from malicious intruders.

Touchless Operation with Synappx Go

With the Synappx Go app, it's easy to email or copy documents remotely. Simply tap the touchscreen with your smartphone. Get extended remote features such as print release, scan/print from cloud services, and display collaboration by upgrading to a subscription version.

Scan and Print with Sharpdesk Mobile

With Sharpdesk Mobile, a free downloadable app for most mobile devices, users can quickly scan and print files from tablets and smartphones.¹



Centralized device management helps ensure optimal uptime.

Seamlessly connect technology and drive collaboration with easy access solutions.

Seamless Device Management

On premises, Sharp Remote Device Manager (SRDM) simplifies device monitoring and management. Event-driven alerts help maximize uptime. SRDM also offers centrally managed security settings, pre-configured driver distribution, energy save settings and more. SRDM is available as a free download.¹

Unified Cloud-based Monitoring and Management

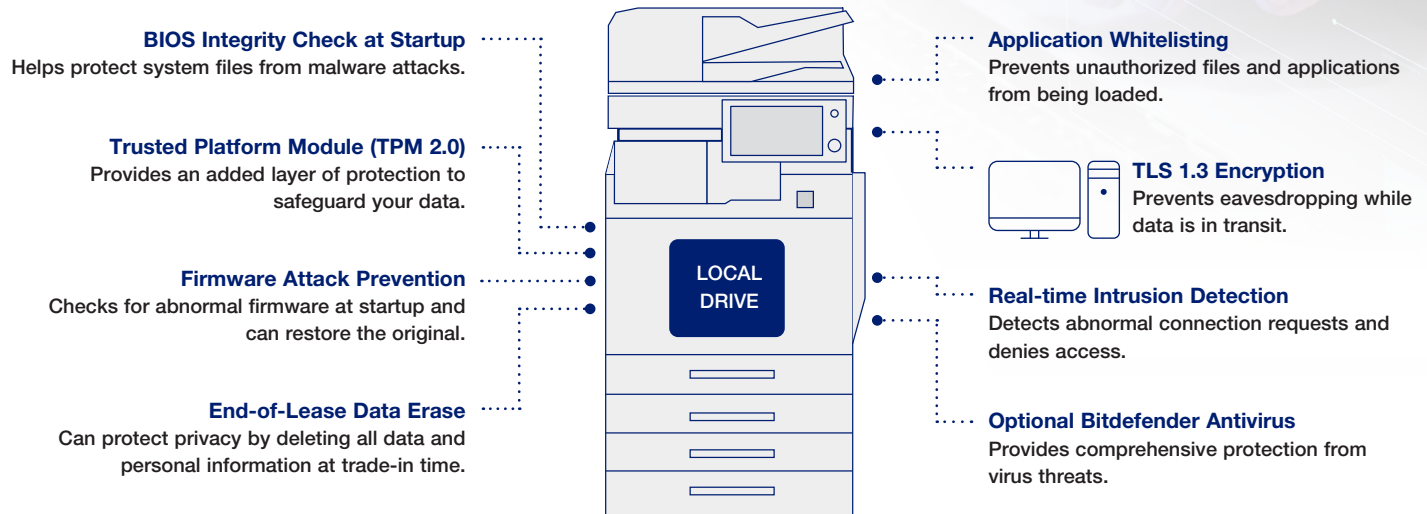
Synappx Manage cloud service enables IT administrators and service providers to remotely manage Sharp MFPs and displays from a single portal.² Proactive monitoring and remediation helps minimize administrator burden, as well as provide insight for optimized investments.

¹ Go to www.sharppusa.com for a list of supported equipment and operating systems.

² Synappx Manage available 2024.

Multi-layer security features to help businesses stay a step ahead of hackers.

The Advanced Series utilizes leading security technology to help organizations protect their data and meet regulatory requirements.



- **Active Directory (AD) Integration** Enables the MFP to join the network domain as a computer, making it a trusted device.
- **Supports AD Group Policy** Allows administrators to centrally manage select security settings and enforce their own policy.
- **256-bit AES Encryption** Ensures data that resides on the local drive is protected.
- **Protects Access to the Device** IP/MAC address filtering, 802.1x authentication and port control protect access to the device.
- **Protects Data in Transit** IPsec and SMB 3.1.1 protocols, as well as TLS 1.3 use data encryption to protect data.
- **WPA3™ Wi-Fi Encryption** Supports the latest data encryption standard for wireless networking security.
- **Authority Groups** Enables administrators to define various groups for different users, which can limit or restrict access to specific features.
- **Optional Data Security Kit** Offers expanded security functions and restricted access features for highly sensitive environments.



Environmental Commitment

Sharp is committed to environmental sustainability and corporate responsibility.

A Responsible Approach to Design

Sharp MFPs adhere to the Sharp Corporation Green Products Guidelines, which requires designing products that consume less power, use recycled materials and reduce materials used in packaging.

Toner Recycling Program

Sharp offers zero-waste-to-landfill recycling for Sharp consumables at no cost to our customers and encourages them to recycle their Sharp toner cartridges by providing them with a pre-paid recycling kit for return to our facility.

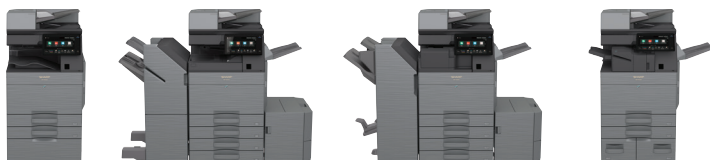
Environmental Commitment

The Sharp Advanced Series models are ENERGY STAR® 3.0 qualified and RoHS compliant. These products also have one of the lowest TEC values in their category as well as one of the lowest stand-by power consumption ratings. Sharp MFPs are EPEAT® registered.

For more information about Sharp environmental leadership including information about energy efficient products, electronics, or toner cartridge recycling, please visit www.sharppusa.com/environment.

The Color Advanced Series. Simply Smarter.

Designed to fit today's hybrid workstyles, offering intelligent features and connectivity that enable office workers to collaborate with colleagues seamlessly and securely even when they are working remotely. To learn more, visit www.sharppusa.com.



SHARP

SHARP ELECTRONICS CORPORATION
100 Paragon Drive, Montvale, NJ 07645
1-800-BE-SHARP • www.sharppusa.com

Design and specifications subject to change without notice.



SYNAPPX



Qualcomm® DirectOffice™



©2025 Sharp Electronics Corporation. All rights reserved. Sharp, Sharp OSA, Sharpdesk, My Sharp, and all related trademarks are trademarks or registered trademarks of Sharp Corporation and/or its affiliated companies. Microsoft, Active Directory, Excel, Microsoft 365, Microsoft Teams, OneDrive, PowerPoint, SharePoint, Windows, and Windows Server are trademarks of the Microsoft group of companies. Android, Gmail, and Google Drive are trademarks or registered trademarks of Google LLC. Adobe, the Adobe logo and PostScript are either registered trademarks or trademarks of Adobe in the US and/or other countries. Qualcomm DirectOffice is a product of Qualcomm Technologies, Inc. and/or its subsidiaries. Qualcomm is a trademark of Qualcomm Incorporated, registered in the United States and other countries. DirectOffice is a trademark of CSR Imaging US, LP, registered in the United States and other countries. AirPrint is a trademark of Apple Inc., registered in the US and other countries. Bitdefender is a trademark or registered trademark of Bitdefender SRL. Wi-Fi and WPA3 are trademarks or registered trademarks of Wi-Fi Alliance®. ENERGY STAR and the ENERGY STAR mark are registered trademarks owned by the U.S. Environmental Protection Agency. All other trademarks are the property of their respective owners.