

# SHARP

## PRO SERIES COLOR DOCUMENT SYSTEMS

simply smarter



BP-90C70

BP-90C80



## The versatile Color Pro Series from Sharp.

Taking organizations to the future of document imaging by helping them work simply smarter.

From high-volume printing environments to busy in-plant facilities, the BP-90C70 and BP-90C80 Color Pro Series deliver the performance and features needed for today's demanding workflows. The latest Fiery® platform delivers enhanced efficiency and ease of use. Flexible paper handling and finishing options deliver professional results.



### Large Easy-to-Use Touchscreen

The 15.4" (diagonally measured) touchscreen is built on an award-winning design and delivers an **accurate, responsive user experience**. Integration with Fiery® Command Workstation® makes job management and late-stage edits easy.

### Designed for Productivity

The BP Color Pro Series leverages the latest **image processing technology** to help users execute jobs with **ease and efficiency**. The strong engine design delivers full-rated speed even on heavy media, enabling operators to get their work done quickly.

### Exclusive Edge-to-Edge Printing

Utilize a wide range of **print-on-demand** applications to produce high-quality, edge-to-edge pamphlets, brochures, booklets and more. Expanded capability supports letter, ledger and long paper sizes. Add professional creasing and perforations with the optional GBC® SmartPunch™ Plus.

### Maximum Performance and Flexibility

A choice of three powerful print controllers are available including a standard Sharp controller as well as two optional Fiery Print Servers operating **the latest FS600 and FS600 Pro platforms**, giving customers the freedom to choose the right solution for their workflow requirements.



## Smart features that enhance productivity and efficiency.

### Streamlined workflows that fit today's demanding work styles.

Easy Operation

Powerful Performance

Versatile Design



Quick access to machine and Fiery settings on the large 15.4" (diagonally measured) touchscreen.



Professional edge-to-edge printing on multiple sizes up to 26.3".



Built-in swing-out keyboard for convenient data entry.



- Offers a **wide range of configurations** from basic high-speed copying and printing to professional folding & finishing.
- Fast color output **speeds of 70 and 80 ppm** even on heavy media.\*
- **300-sheet duplexing** single-pass feeder offers double-feed detection and scans up to 280 images per minute.
- **Auto duplex copying and printing** up to 300 gsm through main paper trays and up to 360 gsm through optional trays.
- Delivers up to **2,400 x 2,400 dpi** resolution for superb image quality.
- Pantone Licensing on these models offers unprecedented levels of color fidelity with the **PANTONE MATCHING SYSTEM®**.
- Built-in **swing-out keyboard** simplifies complex job management entries.
- **Enhanced touchscreen** delivers an accurate, responsive user experience and provides easy access to features.
- Collaborate with workers using **popular cloud services**, such as Microsoft Teams, Google Drive™, Dropbox and others.
- Strong, **multi-layered security features** such as system integrity check, intrusion detection and optional Bitdefender antivirus help protect your data.
- **ENERGY STAR® 3.2 certified** and offers low standby power consumption.
- New **low melt toner** enhances image quality, color balance and density, and also provides higher performance and reliability.
- **Sharp OSA® Technology** provides a secure and intuitive user experience for integrated workflows.

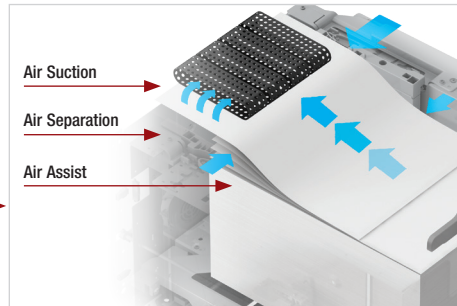
\*Based on 8 1/2" x 11" paper size up to 220 gsm.



## Professional capabilities that get results.

The BP Color Pro Series delivers precise paper handling and edge-to-edge printing with versatile in-line finishing.

When it comes to performance, the BP-90C70 and BP-90C80 deliver the results operators expect. Both models print at full engine speed even with 220 gsm heavy media, and offer duplex copying and printing capabilities up to 360 gsm. With this level of performance, organizations can bring more jobs in-house, saving time and money.



Optional triple air feed paper trays help ensure reliability.

### Production Class Paper Handling

The Color Pro Series offers up to **13,500-sheet paper capacity** and supports media types up to 360 gsm (with options).

## Print Full-Bleed Color Booklets

Produce compelling full-bleed edge-to-edge color booklets on letter or ledger size paper (with options), or create beautiful three panel letter-size brochures with the optional Long Paper Feeding Tray.



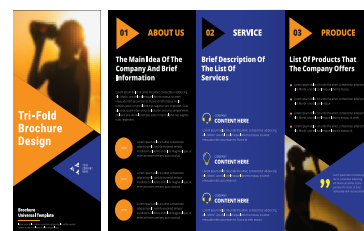
Produce high-quality full-bleed color booklets.



Create beautiful three panel brochures with the optional long paper feeding tray.

### Production Punch, Crease and Perforation

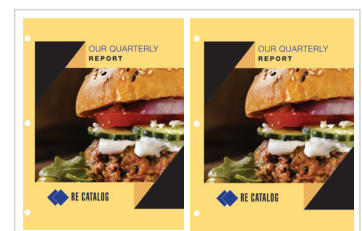
With the fully automated **GBC® SmartPunch™ Plus** in-line professional finishing solution, users can double punch, crease and create perforations. Customers can expand their finishing capabilities like never before. The SmartPunch Plus operation panel makes setting up jobs quick and easy.



Creasing capability for precise folding.



Adjustable perforation.



Double punch processing for two-up sheets.



## Enhance productivity and elevate color output quality with leading edge Fiery® Color Print Servers.

The BP Color Pro Series offers two powerful integrated solutions for managing print-on-demand environments.



BP-90C80 shown with Fiery Command Workstation at the Sharp control panel with full keyboard and touchpad.



View printed jobs, jobs waiting and backup schedules with the BE-PE10 Quicktouch™ software interface.

### High Quality and Performance on Every Page

The BP-PE10 External Print Server is built on the latest **Fiery technology** and is **designed to maximize printing efficiency** and color output quality. The new Fiery Print Scheduler enables users to schedule jobs through a visual interface. Having Fiery Command WorkStation® right at the MFP touchscreen panel, makes setting up complex jobs easy.

### Accurate Color Output Across Applications

Produce precise, consistent color from all your applications, platforms and formats with **Fiery color management technology**. Accurately match and manage corporate, PANTONE®, and custom spot colors with Fiery Spot-On™.

### Powerful Fiery Workflow at an Entry Level Price

The BP-PE11 Embedded Fiery Print Server delivers **high-quality, consistent output** with the signature time-saving Fiery file-processing and job management tools at an entry level price. Driven by the innovative Fiery FS600 software, the BP-PE11 can deliver a blend of management, automation and processing features that work together with the BP Color Pro Series.

### Easily Handle High-volume Production

**Boost production** with the power of the new, advanced Fiery FS600 and FS600 Pro platforms. The BP-PE10 and BP-PE11 Fiery Print Servers are designed to handle heavy workloads, providing fast turnaround times.

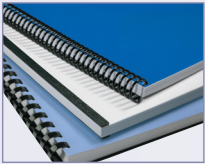
# Versatile · Scalable

## Breakthrough Performance

The BP-90C70 and BP-90C80 Color Pro Series document systems provide unsurpassed performance and reliability.

### Versatile Finishing Options

Select the 4,000-sheet stacking finisher with 100-sheet stapling, or the saddle-stitch finisher, which can produce professional grade booklets up to 80-pages long.



### GBC® SmartPunch™ Plus

Production punching system for creating professional bound booklets with ten common punch styles, now with available creasing and perforation dies.

### Post Sheet Inserter

Produce professional looking documents with pre-printed covers and chapter inserts with the available post sheet inserter.

### Duplexing Single Pass Feeder (DSPF)

Standard 300-sheet dual head document feeder scans both sides of a document in a single pass.

### Smart Scan

Can automatically adjust resolution and compression, as well as detect original size and correct skew.



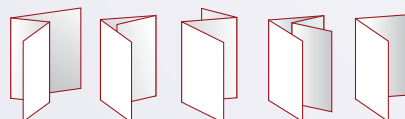
### Plockmatic Production Booklet Maker System

Produces 120-page professional, square-fold spine booklets in-line at engine speed. Combine GBC creasing for precise folds to help keep image quality integrity on the spine.



### Multi-folding Unit

Provides a variety of folds, including Z-fold, C-fold, Accordion-fold, Double-fold and Half-fold.



Z-fold C-fold Accordion-fold Double-fold Half-fold

### 3,000-sheet Standard Paper Capacity

Includes a 2,000-sheet letter-size tandem tray and two 500-sheet letter/legal/ledger size trays that offer enhanced auto tray switching. Select trays can even feed up to 50 Monarch/COM9/COM10 envelopes and heavy paper up to 300 gsm for ultimate flexibility.

## Modular Design for Maximum Flexibility

Custom configurations deliver bottom line results.

### Smart Touchscreen

Enhanced touchscreen is easy to use and delivers the responsiveness and accuracy users expect.

### Convenient Job Management

256 GB solid state drive provides on-board document storage. An intuitive thumbnail view makes it easy to select, edit, reprint, repaginate and more.

### Precision Imaging

2,400 x 2,400 dpi resolution delivers razor-sharp text and graphics. Automatic front to back image registration provides ultimate consistency and convenience.

### Built-in Swing-out Keyboard

Built-in swing-out, full-size QWERTY keyboard enables easy data entry and job management.

### 500-sheet Multi-bypass Tray

Feeds paper sizes from 5-1/2" x 8-1/2" to 13" x 19", as well as banner paper up to 12" x 26.3" with the optional MX-LT10 Long Paper Feeding Tray.

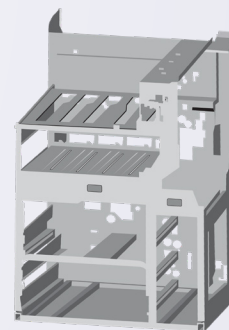
### Multi-layered Security Features

Leading security features plus optional Bitdefender anti-malware provide enhanced protection of data and personal information and helps protect against network intrusions.



### Highly-rigid Frame Design

Ensures reliability and durability to withstand heavy use from high-volume output.



### Reliable Paper Handling

The advanced 5,000-sheet large capacity paper tray option utilizes triple air-feed technology, which directs air flow with precision accuracy for proper paper handling and enhanced media support up to 360 gsm. Two large capacity trays can be connected in tandem (as shown) to achieve a maximum on-line paper capacity of 13,500 sheets.





## Flexible configurations to meet your needs.

The BP Color Pro Series offers flexible paper handling and finishing options to accommodate any size in-plant or on-demand workflow environment.



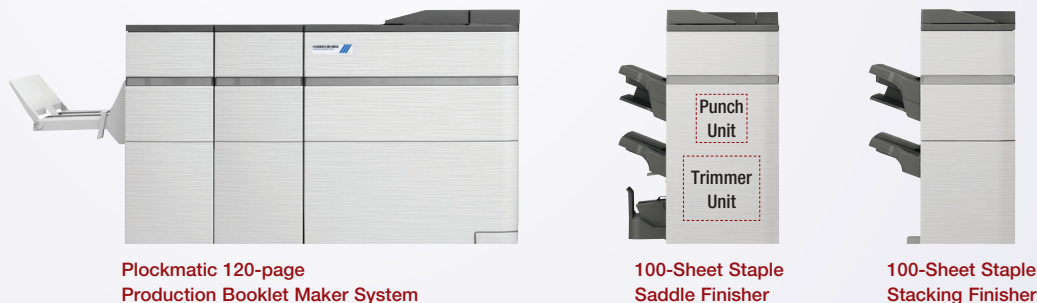
BP-90C80 shown with 3,000-sheet large capacity cassette, 100-sheet Finisher and 100-sheet bypass tray.



BP-90C80 shown with Curl Correction Unit, Inserter, Multi-folding Unit, 100-sheet Saddle-stitch Finisher, 5,000-sheet air-feed large capacity tray, 500-sheet multi-bypass tray and status indicator.

### Modular Options Make it Easy to Build the System of Your Choice

Options for the BP-90C70/90C80 enable businesses to **choose from several high performance finishing systems** that offer up to 100-sheet stapling, professional saddle-stitch booklet making and three-hole punching. More advanced configurations include a square-fold spine booklet making system, a professional punching system, a two-tray inserter, a multi-folding unit and a trimmer unit.



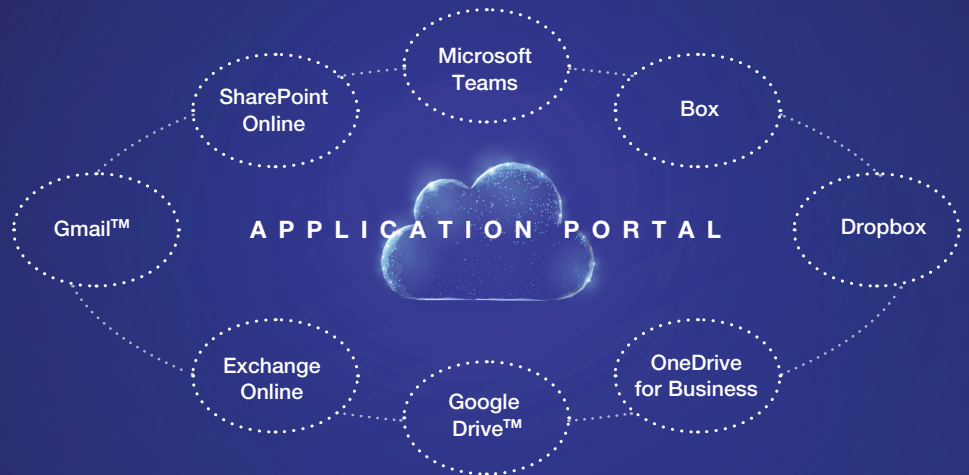
## Designed for today's individual workstyles.

From media handling to workflow and collaboration, the BP-90C70 and BP-90C80 models deliver the features businesses need to get the job done.

Sharp makes it easy for businesses to execute jobs quickly, leaving more time for the actual business at hand. Scan large documents at up to 280 ipm using the 300-sheet duplexing single pass feeder with standard double-feed detection. Image processing technology and artificial intelligence (AI) can automatically adjust resolution and compression, as well as detect original size and correct skewed documents when scanning. The award-winning, tablet style touchscreen delivers an accurate, responsive experience, while menu-driven Easy Modes offer fast, simple operation enabling users to get their copying and scanning tasks done in less time.

## Print and Share Documents Easily

Seamlessly collaborate with colleagues even when they are working remotely. With Cloud Connect, businesses gain access to popular cloud services including Microsoft Teams, Google Drive and others. The Sharp Application Portal makes it easy for administrators to add new apps and update existing apps right from the MFP touchscreen.



### Integrate with Email Services

In addition to native capability, the **Email Connect** feature enables seamless scan-to-email integration with Microsoft Exchange/365 and Gmail™ user accounts, making it easy to identify the sender of scanned files.

### Intelligent Image Processing

Scan documents to popular file formats including Microsoft Word, PowerPoint and Excel, as well as Searchable PDF, Encrypted PDF and others. Direct print the same file types from thumb drives, cloud applications and mobile devices.\*

**Adobe Embedded Print Engine** direct prints PDF files with greater speed and rendering accuracy.

### Flexible Standard Printing Solutions

PCL 6 and Adobe PostScript 3 printing helps users speed through their work. Native Universal Print from Microsoft eliminates the need for on-premises infrastructure, and enables IT to **manage printers through a centralized portal**.



\*This function is enabled via Qualcomm DirectOffice technology.

## Simplify complex business workflows.

The BP Color Pro Series also makes it easy to automate processes and eliminate redundant tasks.



### Sharp OSA Technology

Leverage the power of your network applications, back-end systems and cloud services with Sharp OSA integration.<sup>1</sup> Simplify manual workflow tasks and save time. Create your own custom integrations or take advantage of the growing portfolio of Sharp OSA applications available from Sharp Partner Program members.



## Centralized device management helps ensure optimal uptime.

Enhance operational efficiency with advanced device management tools.

### Seamless Device Management

Sharp Remote Device Manager (SRDM) simplifies device monitoring and management. Event-driven alerts help maximize uptime. SRDM also offers centrally managed security settings, pre-configured driver distribution, energy save settings and more. SRDM is available as a free download.<sup>2</sup>

### 24/7 Training with My Sharp™

Managing all of the advanced features of your Sharp product is simple and easy. Ask your authorized Sharp dealer about the **My Sharp** website. This dedicated customer training website is customized to your BP-90C70/90C80 and allows you to locate resources and find information specific to your configuration.



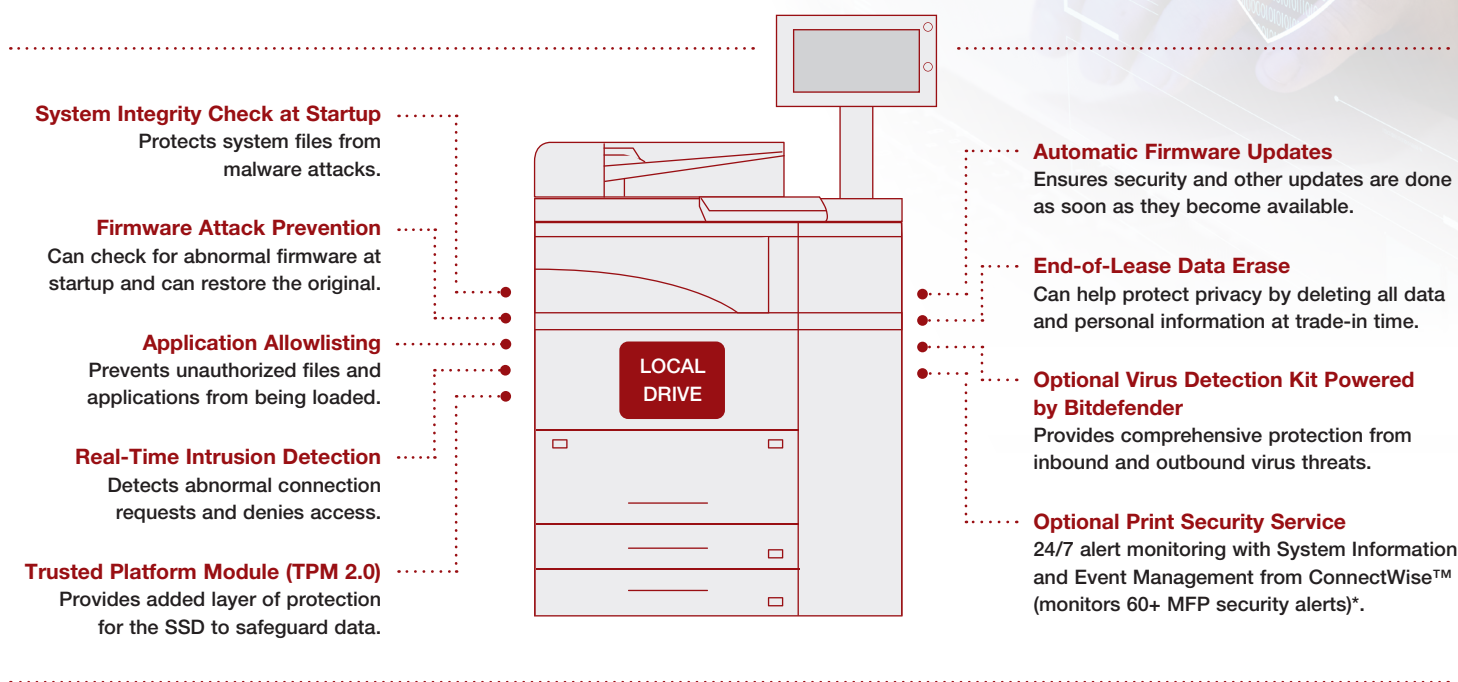
<sup>1</sup> Some features require optional equipment and/or services.

<sup>2</sup> Not available when equipped with Fiery devices. Go to [www.sharppusa.com](http://www.sharppusa.com) for a list of supported equipment and operating systems.



## Multi-layer security features to help businesses stay a step ahead of hackers.

Leading security technology helps organizations protect their data and meet regulatory requirements.



- **Active Directory (AD) Integration** Enables the MFP to join the network domain as a computer, making it a trusted device.
- **Supports AD Group Policy** Allows administrators to centrally manage select security settings and enforce their own policy.
- **256-bit AES Encryption** Ensures data that resides on the local drive is protected.
- **Protects Access to the Device** IP/MAC address filtering, 802.1x authentication and port control protect access to the device.
- **Protects Data in Transit** IPsec and SMB 3.1.1 protocols, as well as TLS 1.3 use data encryption to protect data.
- **Authority Groups** Enables administrators to define various groups for different users, which can limit or restrict access to specific features.
- **Optional Data Security Kit** Offers expanded security functions and restricted access features for highly sensitive environments.



\* Available from participating dealers.

## Environmental Commitment

Sharp is committed to environmental sustainability and corporate responsibility.

### A Responsible Approach to Design

Sharp MFPs adhere to the Sharp Corporation Green Products Guidelines, which require designing products that consume less power, use recycled materials and reduce materials used in packaging.

### Toner Recycling Program

Sharp offers zero-waste-to-landfill recycling for Sharp consumables at no cost to our customers and encourages them to recycle their Sharp toner cartridges by providing them with a pre-paid recycling kit for return to our facility.

### Environmental Commitment

The BP Color Pro Series models are ENERGY STAR® 3.2 certified and RoHS compliant. These products also utilize low energy consumption as well as low stand-by power. Sharp MFPs are EPEAT® registered.

For more information about Sharp Corporation environmental leadership including information about energy efficient products, electronics, or toner cartridge recycling, please visit [www.sharpusa.com/environment](http://www.sharpusa.com/environment).

## The BP Color Pro Series. Simply Smarter.

Designed for today's high-volume printing environments, offering intelligent workflow features and connectivity that enables organizations to bring more print jobs in-house, saving time and money. To learn more, visit [www.sharpusa.com](http://www.sharpusa.com).



# SHARP

SHARP ELECTRONICS CORPORATION  
100 Paragon Drive, Montvale, NJ 07645  
1-800-BE-SHARP • [www.sharpusa.com](http://www.sharpusa.com)

Design and specifications subject to change without notice.



Qualcomm® DirectOffice™

Bitdefender



©2025 Sharp Electronics Corporation. All rights reserved. Sharp, Sharp OSA, My Sharp, and all related trademarks are trademarks or registered trademarks of Sharp Corporation and/or its affiliated companies. Microsoft, Active Directory, Excel, Microsoft 365, Microsoft Teams, OneDrive, PowerPoint, SharePoint, Windows, and Windows Server are trademarks of the Microsoft group of companies. Gmail, and Google Drive are trademarks or registered trademarks of Google LLC. Adobe and PostScript are either registered trademarks or trademarks of Adobe in the US and/or other countries. Qualcomm DirectOffice is a product of Qualcomm Technologies, Inc. and/or its subsidiaries. Qualcomm is a trademark of Qualcomm Incorporated, registered in the United States and other countries. DirectOffice is a trademark of CSR Imaging US, LP, registered in the United States and other countries. Bitdefender is a trademark or registered trademark of Bitdefender SRL. Fiery is a trademark or registered trademark of Fiery, LLC. ENERGY STAR and the ENERGY STAR mark are registered trademarks owned by the U.S. Environmental Protection Agency. All other trademarks are the property of their respective owners.