

Setting of Air Assist Value Adjustment Profile

Air assist is a function to send air when feeding paper to prevent multi-feed and paper jam. Perform air assist adjustment according to the paper size.

How to Set

Set the air assist value adjustment profile according to the paper type, paper weight, size, and humidity.

Note

The profile can be set only in the System Administrator mode. For how to log in with the System Administrator mode, refer to "User's Manual - Operations."

1 Check if the paper can be adjustable.

Adjustable papers are shown below:
 Coated: 64 to 80 g/m², 177 to 216 g/m²
 Uncoated: 106 to 135 g/m², 177 to 216 g/m²

2 Check the humidity.

1. Tap > [Device] > [Maintenance].
2. Tap [NVM Read/Write].
3. Enter "525-460" in Chain-Link.
The humidity is displayed in [Current Value]

Note

Do not tap [Change].

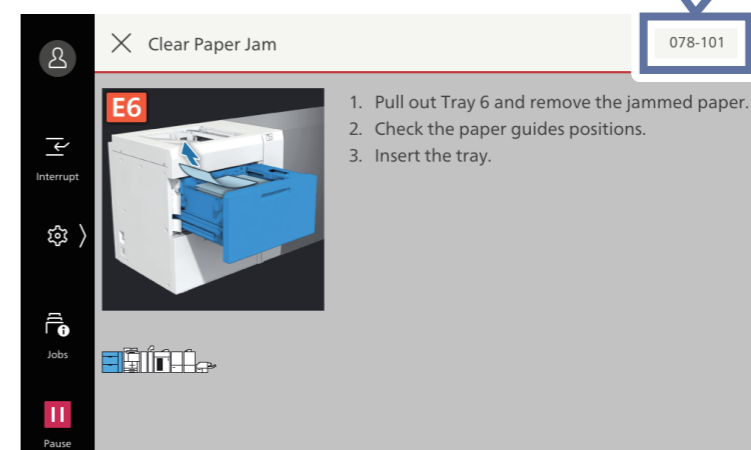
3 Setting of the air assist value adjustment profile

1. Tap > [Device] > [Paper Tray Settings] > [Common Settings] > [Custom Paper Settings].
2. Tap the user paper that you want to change the settings.
3. Tap [Adjust Air Assist Values].
4. Set the air assist value adjustment profile according to the paper type, paper weight, size, and humidity, and tap [OK].
 In the case of coated: 64 to 80 g/m² -> Go to P.2.
 In the case of coated: 177 to 216 g/m² -> Go to P.3.
 In the case of uncoated: 106 to 135 g/m² -> Go to P.4.
 In the case of uncoated: 177 to 216 g/m² -> Go to P.5.

When a paper jam occurs in the air tray, set the air assist profile again.

Set the air assist value adjustment profile according to the fault code so that the paper jam can be resolved.

Paper feeding error -> Go to P.6 • 078-101 • 078-131 • 078-151 • 078-132	Multi-feed -> Go to P.7 • 077-140 • 077-141 • When multi-feed occurs in the transfer unit
--	--



Check the followings before setting the air assist value adjustment profile.

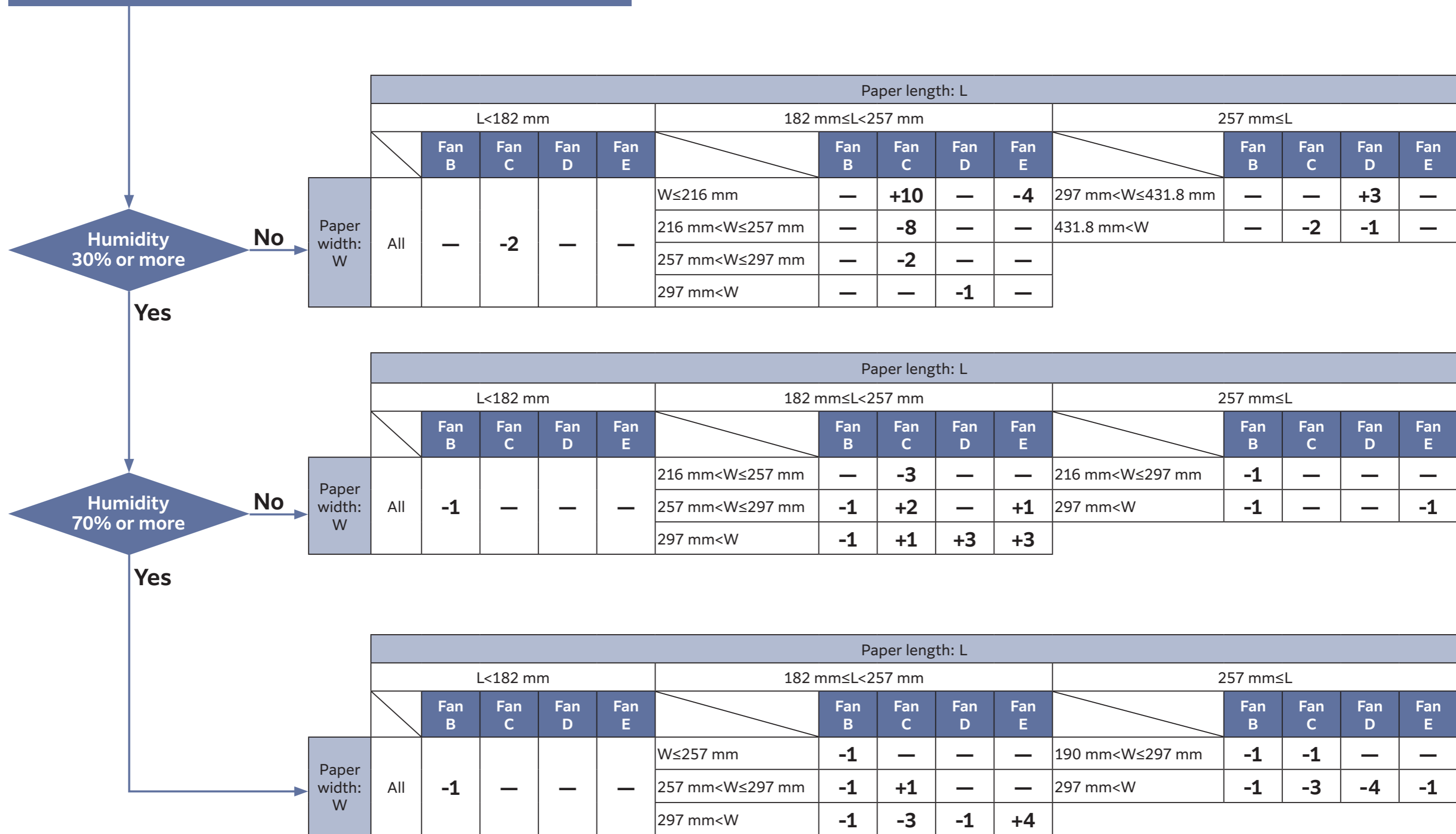
- The paper size, paper type, and weight are correctly set.
- Paper is loaded in the paper trays correctly.

Note

The guide is correctly adjusted to the paper size.

- Paper is in the correct state.
 When paper is curled, correct the curl.
 When there are paper burrs (small projections on the cutting surface of paper), fan out papers well.

In the case of coated: 64 to 80 g/m²

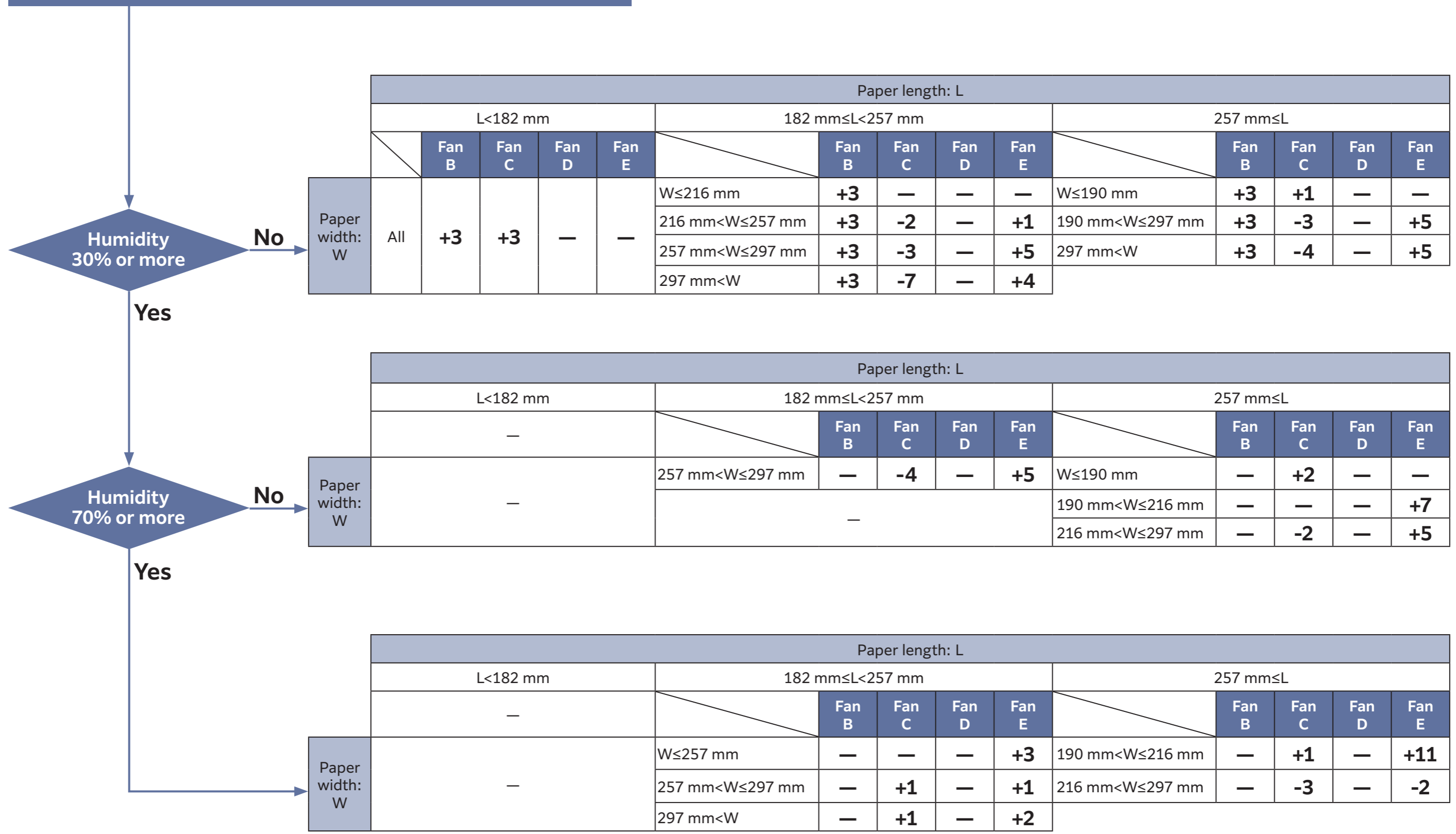


		Paper length: L													
		L < 182 mm				182 mm ≤ L < 257 mm				257 mm ≤ L					
		Fan B	Fan C	Fan D	Fan E	Fan B	Fan C	Fan D	Fan E	Fan B	Fan C	Fan D	Fan E		
Paper width: W	All	W ≤ 216 mm	-	-2	-	-	+10	-	-4	297 mm < W ≤ 431.8 mm	-	-	+3	-	
		216 mm < W ≤ 257 mm	-	-2	-	-	-8	-	-	431.8 mm < W	-	-2	-1	-	
		257 mm < W ≤ 297 mm	-	-2	-	-	-	-	-						
		297 mm < W	-	-2	-	-	-	-	-1	-					

		Paper length: L													
		L < 182 mm				182 mm ≤ L < 257 mm				257 mm ≤ L					
		Fan B	Fan C	Fan D	Fan E	Fan B	Fan C	Fan D	Fan E	Fan B	Fan C	Fan D	Fan E		
Paper width: W	All	216 mm < W ≤ 257 mm	-1	-	-	-	-3	-	-	216 mm < W ≤ 297 mm	-1	-	-	-	
		257 mm < W ≤ 297 mm	-1	-	-	-	-1	+2	-	+1	297 mm < W	-1	-	-	-1
		297 mm < W	-1	-	-	-	-1	+1	+3	+3					

		Paper length: L													
		L < 182 mm				182 mm ≤ L < 257 mm				257 mm ≤ L					
		Fan B	Fan C	Fan D	Fan E	Fan B	Fan C	Fan D	Fan E	Fan B	Fan C	Fan D	Fan E		
Paper width: W	All	W ≤ 257 mm	-1	-	-	-	-	-	-	190 mm < W ≤ 297 mm	-1	-1	-	-	
		257 mm < W ≤ 297 mm	-1	-	-	-	-1	+1	-	-	297 mm < W	-1	-3	-4	-1
		297 mm < W	-1	-	-	-	-1	-3	-1	+4					

In the case of coated: 177 to 216 g/m²

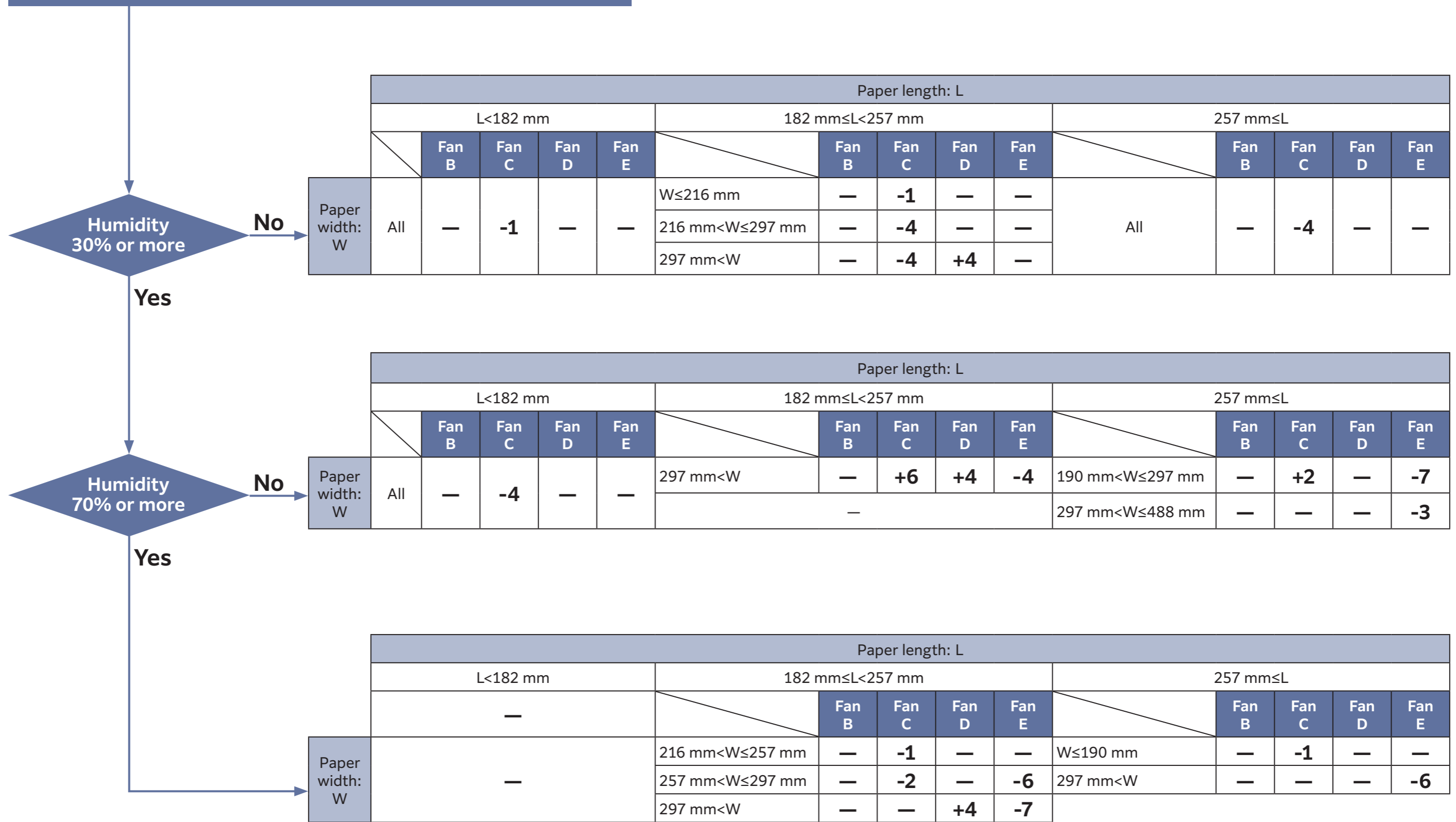


		Paper length: L																
		L < 182 mm				182 mm ≤ L < 257 mm				257 mm ≤ L								
		Fan B	Fan C	Fan D	Fan E	Fan B	Fan C	Fan D	Fan E	Fan B	Fan C	Fan D	Fan E					
Paper width: W	All					W ≤ 216 mm	+3	—	—	—	W ≤ 190 mm				+3	+1	—	—
						216 mm < W ≤ 257 mm	+3	-2	—	+1	190 mm < W ≤ 297 mm				+3	-3	—	+5
						257 mm < W ≤ 297 mm	+3	-3	—	+5	297 mm < W				+3	-4	—	+5
						297 mm < W	+3	-7	—	+4								

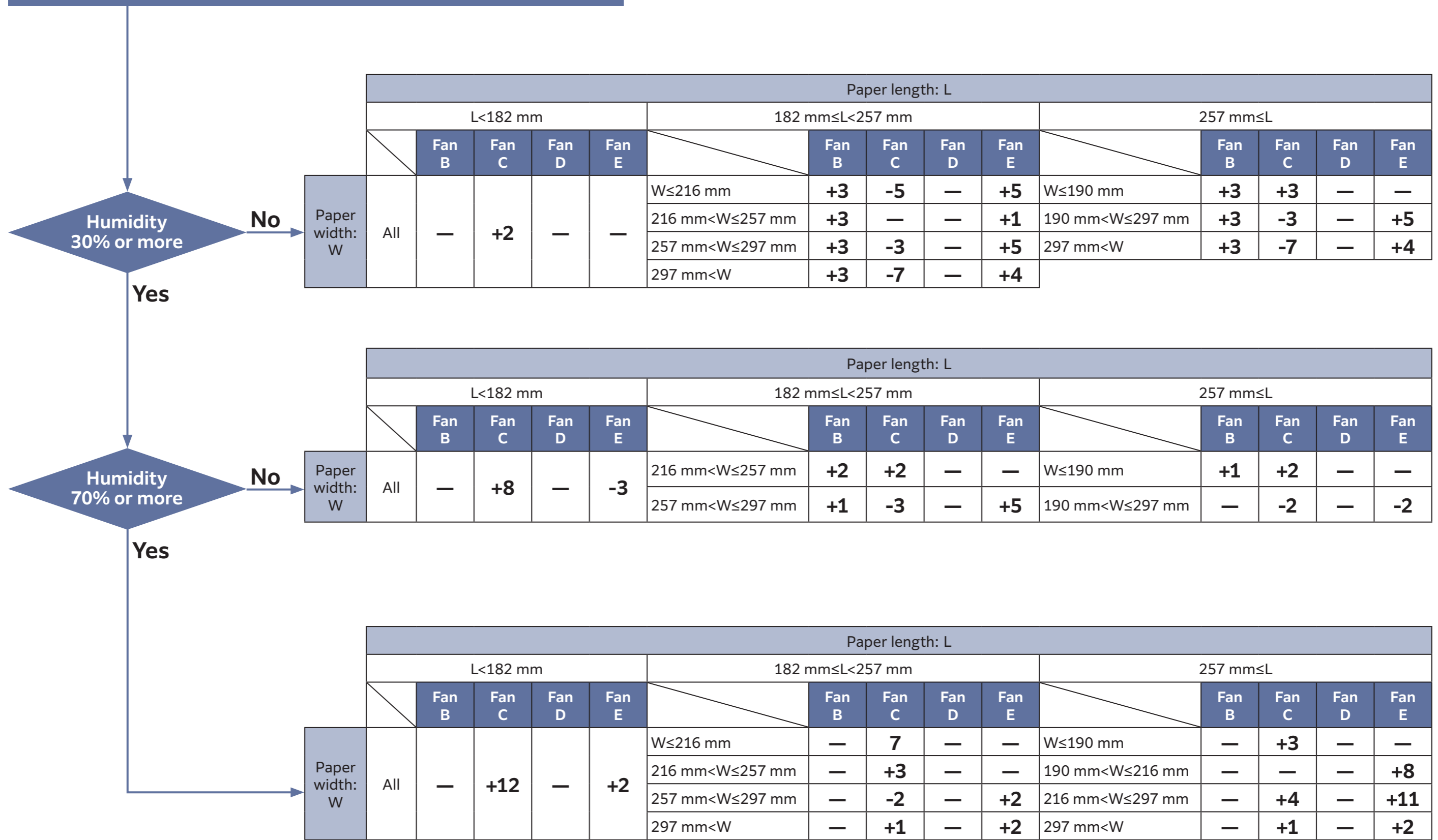
		Paper length: L																			
		L < 182 mm				182 mm ≤ L < 257 mm				257 mm ≤ L											
		—				Fan B	Fan C	Fan D	Fan E	Fan B	Fan C	Fan D	Fan E								
Paper width: W						257 mm < W ≤ 297 mm				—	-4	—	+5	W ≤ 190 mm				—	+2	—	—
										190 mm < W ≤ 216 mm				—	—	—	+7				
										216 mm < W ≤ 297 mm				—	-2	—	+5				

		Paper length: L																			
		L < 182 mm				182 mm ≤ L < 257 mm				257 mm ≤ L											
		—				Fan B	Fan C	Fan D	Fan E	Fan B	Fan C	Fan D	Fan E								
Paper width: W						W ≤ 257 mm				—	—	—	+3	190 mm < W ≤ 216 mm				—	+1	—	+11
						257 mm < W ≤ 297 mm				—	+1	—	+1	216 mm < W ≤ 297 mm				—	-3	—	-2
						297 mm < W				—	+1	—	+2								

In the case of uncoated: 106 to 135 g/m²

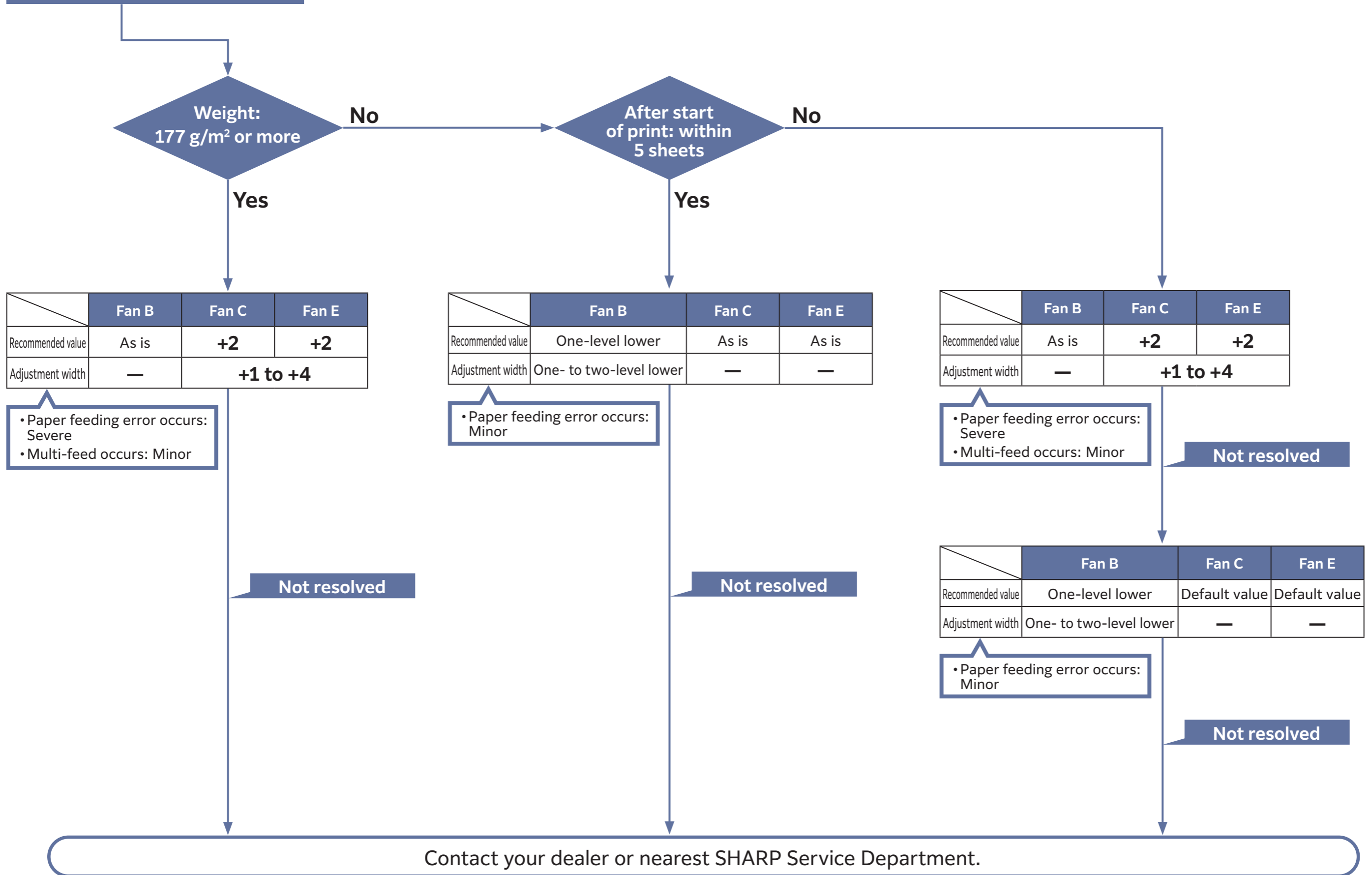


In the case of uncoated: 177 to 216 g/m²



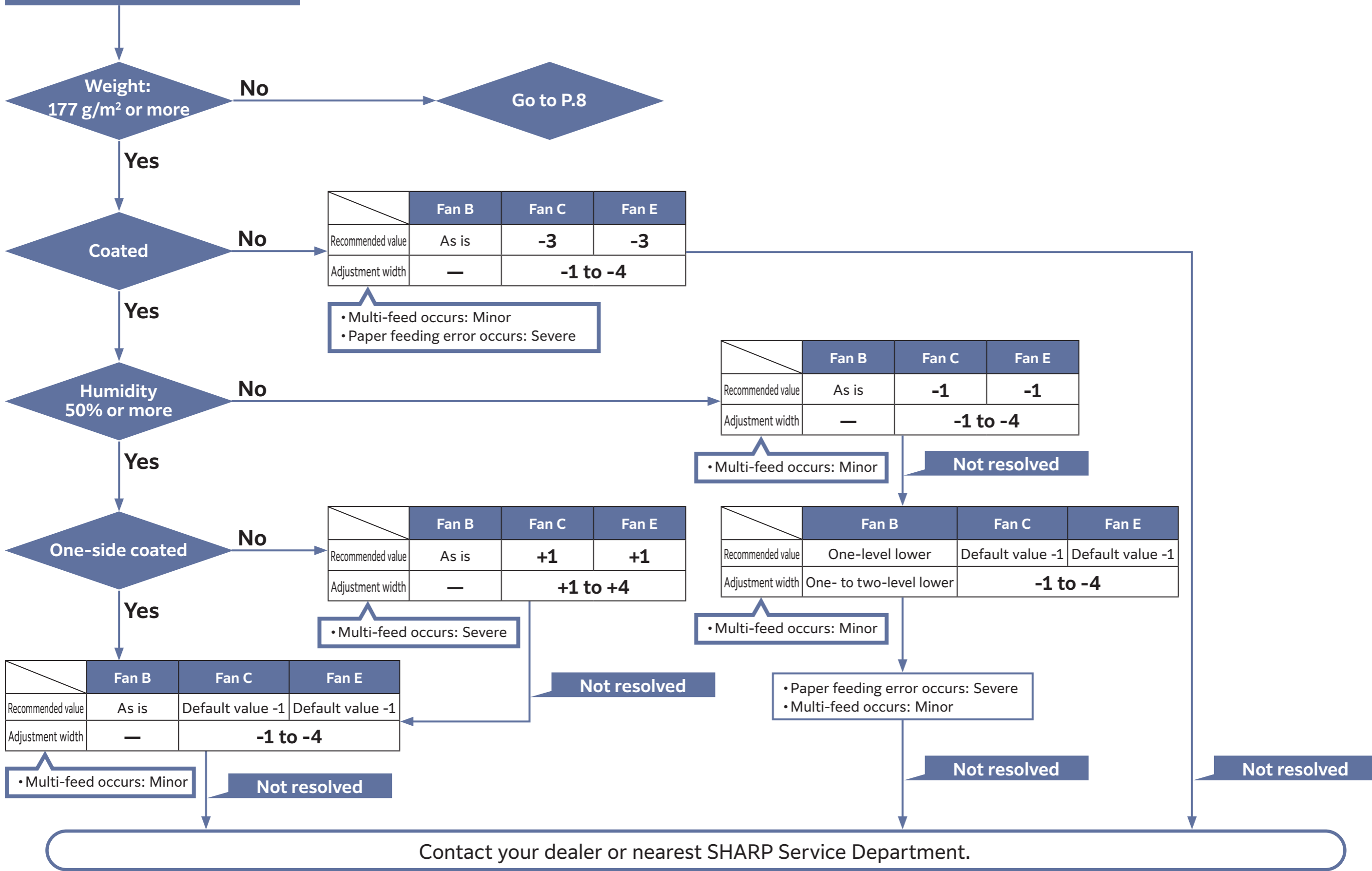
Paper feeding error

If the error is not resolved even after the recommended value is entered, enter an appropriate value within the adjustment range according to the error status.



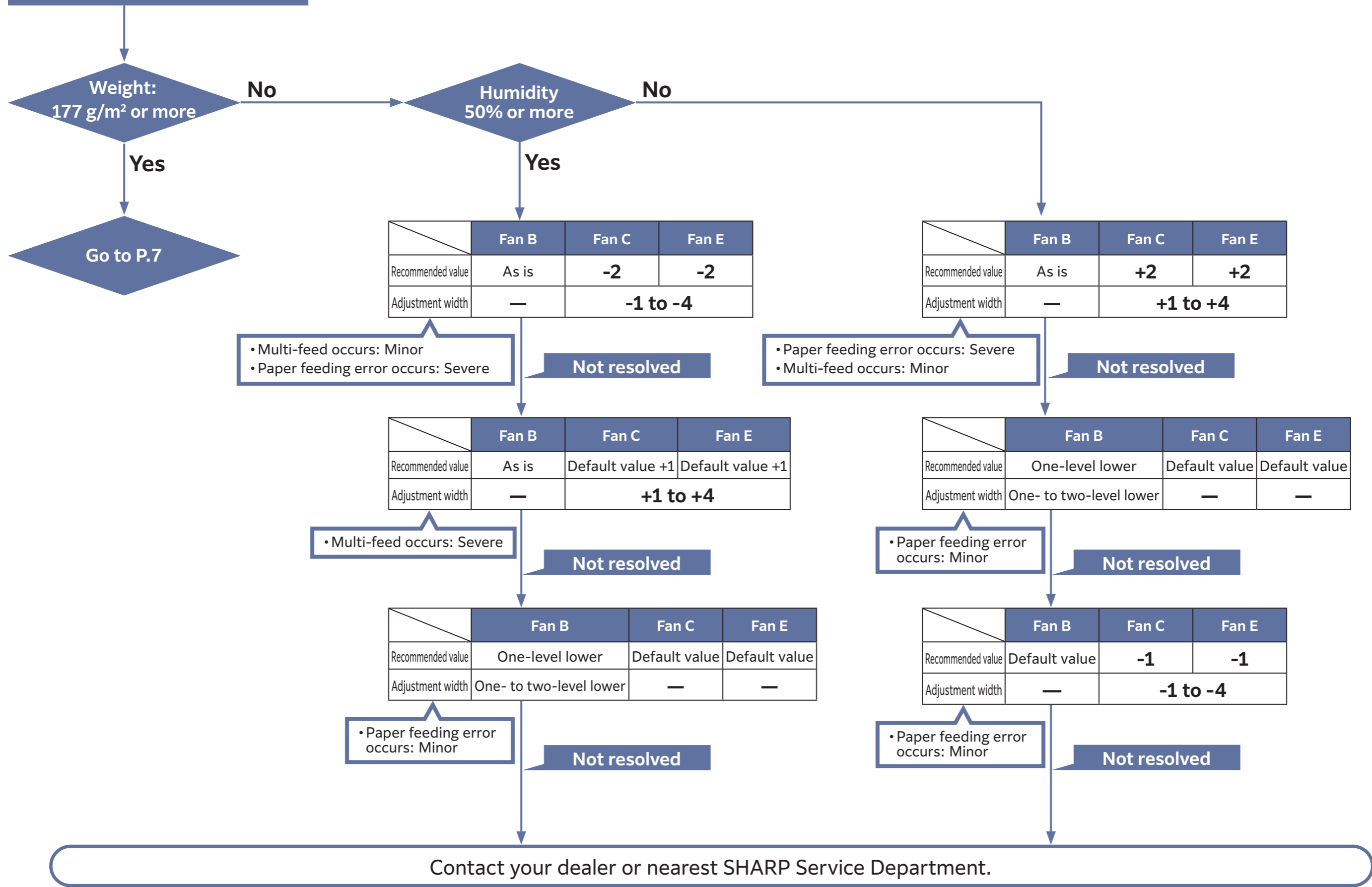
Multi-feed

If the error is not resolved even after the recommended value is entered, enter an appropriate value within the adjustment range according to the error status.



Multi-feed

If the error is not resolved even after the recommended value is entered, enter an appropriate value within the adjustment range according to the error status.



SHARP
SHARP CORPORATION