

## Banner Print Alignment Adjustment One Point Guide

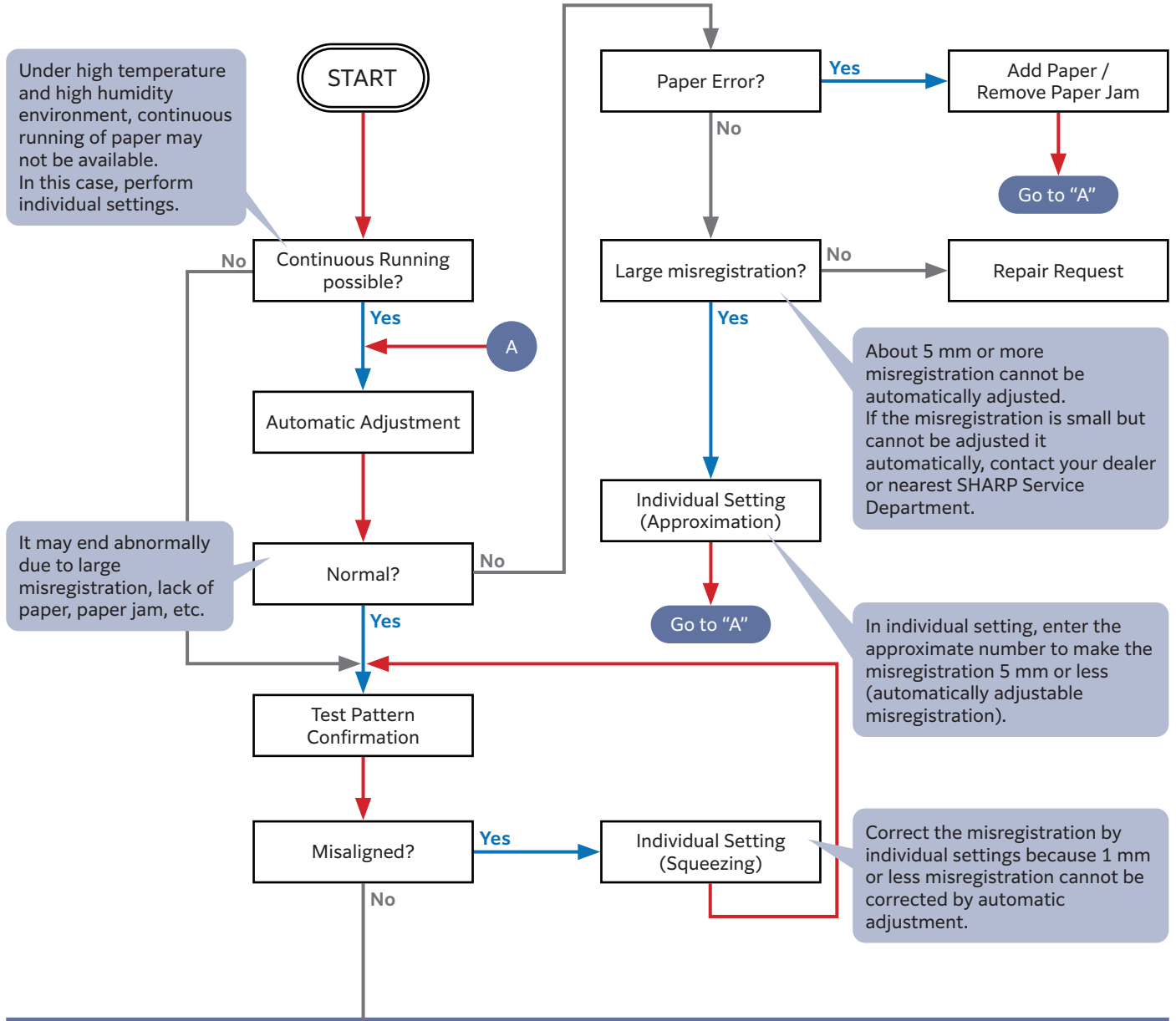
Digital Full Color Production Printer

### Alignment Adjustment Procedure Case Classification

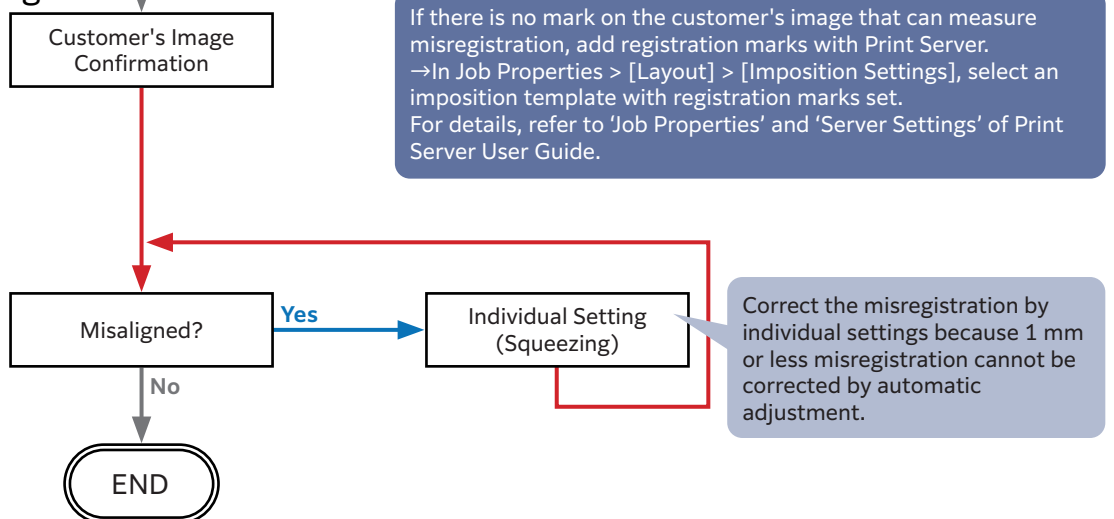
Paper Length(mm)		Up to 488	488.1 to 729	729.1 to 1,200
Print Side		2 Sided/1 Sided	2 Sided/1 Sided	1 Sided only
Auto adjustment for alignment (front-to-back registration adjustments)		✓ 5 minutes (from standby)	✓ Coated paper under high temperature and high humidity environment, set alignment individually	X
Individual setting for alignment		✓	✓	✓
Maximum time (approximate value)	1 Sided	About 20 minutes	About 20 minutes (Coated paper under high temperature and high humidity environment, about 35 minutes)	About 20 minutes (Coated paper under high temperature and high humidity environment, about 35 minutes)
	2 Sided	About 30 minutes	About 30 minutes (Coated paper under high temperature and high humidity environment, about 50 minutes)	-
Note		When using coated paper, feed from High Capacity Trays / Air Trays	Accuracy of the registration is reduced compared to paper of 488 mm or less	Accuracy of the registration is reduced compared to paper of 729 mm or less

# Case 1. 488.1 to 729 mm Paper

## Use Test Pattern

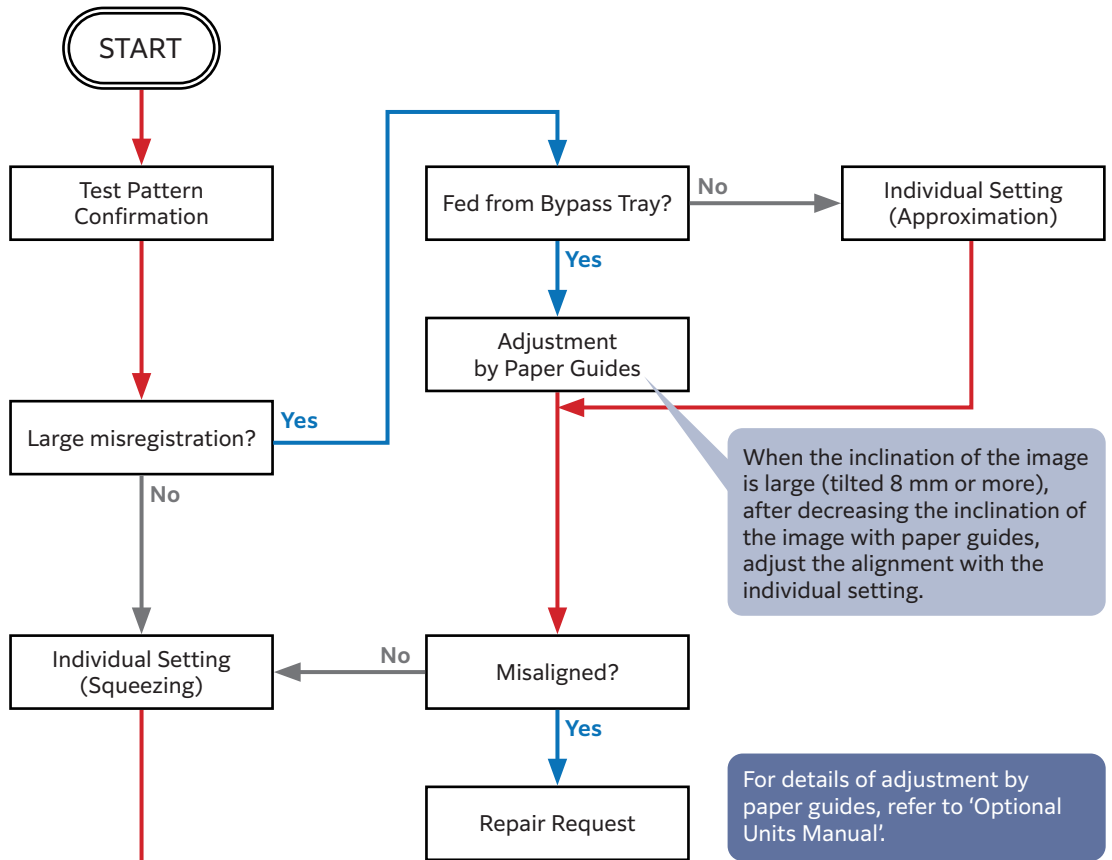


## Use Customer's Image

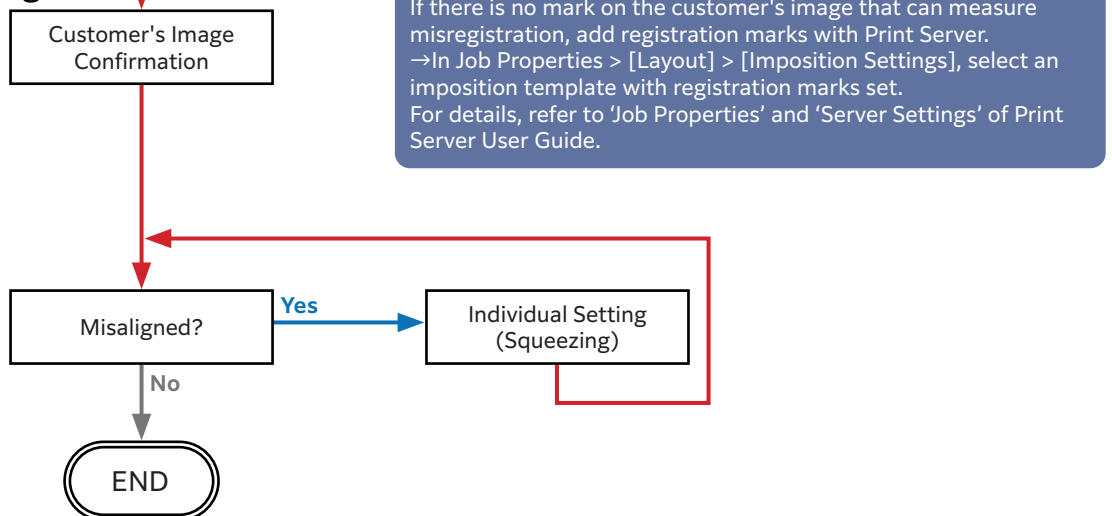


# Case 2. 729.1 to 1,200 mm Paper

## Use Test Pattern



## Use Customer's Image



# **SHARP**

## **SHARP CORPORATION**

December 2023 Edition 1

GM1878E5-1