

# **DIGITAL FULL COLOR MULTIFUNCTIONAL SYSTEM MX-C607P**

---

## **User's Guide**

---

Machine type(s):

5063

Model(s):

539

# Contents

**Safety information.....5**

    Conventions.....5

    Product statements.....5

**Learning about the printer.....8**

    Selecting a location for the printer.....8

    Printer configurations.....9

    Attaching cables.....10

    Using the control panel.....11

    Understanding the status of the power button and indicator light.....11

    Using the home screen.....12

    Printing the Menu Settings Page.....13

    Installing the printer software.....13

**Setting up and using the home screen applications.....14**

    Customizing the home screen.....14

    Setting up Forms and Favorites.....14

    Configuring Eco-Settings.....14

    Managing bookmarks.....14

    Managing contacts.....15

**Loading paper and specialty media.....18**

    Setting the size and type of the specialty media.....18

    Configuring Universal paper settings.....18

    Loading trays.....18

    Loading the multipurpose feeder.....20

    Linking trays.....21

**Paper support.....23**

    Supported paper sizes.....23

    Supported paper types.....26

    Supported paper weights.....28

**Printing.....29**

    Printing from a computer.....29

Printing forms.....	29
Printing from a mobile device.....	29
Printing from a flash drive.....	31
Supported flash drives and file types.....	32
Configuring confidential jobs.....	32
Printing confidential and other held jobs.....	33
Printing a font sample list.....	33
Printing a directory list.....	33
Canceling a print job.....	34

## **Understanding the printer menus.....35**

Menu map.....	35
Device.....	36
Print.....	44
Paper.....	53
USB Drive.....	55
Network/Ports.....	57
Security.....	68
Reports.....	75
Help.....	76
Troubleshooting.....	76

## **Securing the printer.....77**

Locating the security slot.....	77
Erasing printer memory.....	77
Erasing printer hard disk memory.....	77
Encrypting the printer hard disk.....	78
Restoring factory default settings.....	78
Statement of Volatility.....	78

## **Maintaining the printer.....80**

Adjusting the speaker volume.....	80
Networking.....	80
Setting up serial printing (Windows only).....	81
Cleaning the printer.....	82
Ordering parts and supplies.....	82
Replacing parts and supplies.....	84

Storing supplies.....	89
Moving the printer.....	89
Saving energy and paper.....	90
<b>Clearing jams.....</b>	<b>92</b>
Avoiding jams.....	92
Identifying jam locations.....	93
Paper jam in trays.....	94
Paper jam in the multipurpose feeder.....	95
Paper jam in the standard bin.....	96
Paper jam in door B.....	97
Paper jam in the finisher bin.....	100
Staple jam in door G.....	102
<b>Troubleshooting.....</b>	<b>105</b>
Configuring the SMTP server.....	105
Network connection problems.....	105
Hardware options problems.....	107
Issues with supplies.....	108
Paper feed problems.....	108
Printing problems.....	112
Color quality problems.....	130
Contacting your dealer.....	133
<b>Notices.....</b>	<b>134</b>
<b>Index.....</b>	<b>145</b>



# Safety information

## Conventions

**Note:** A *note* identifies information that could help you.

**Warning:** A *warning* identifies something that could damage the product hardware or software.

**CAUTION:** A *caution* indicates a potentially hazardous situation that could injure you.

Different types of caution statements include:



**CAUTION—POTENTIAL INJURY:** Indicates a risk of injury.



**CAUTION—SHOCK HAZARD:** Indicates a risk of electrical shock.



**CAUTION—HOT SURFACE:** Indicates a risk of burn if touched.



**CAUTION—TIPPING HAZARD:** Indicates a crush hazard.



**CAUTION—PINCH HAZARD:** Indicates a risk of being caught between moving parts.

## Product statements



**CAUTION—POTENTIAL INJURY:** To avoid the risk of fire or electrical shock, connect the power cord to an appropriately rated and properly grounded electrical outlet that is near the product and easily accessible.



**CAUTION—POTENTIAL INJURY:** To avoid the risk of fire or electrical shock, use only the power cord provided with this product or the manufacturer's authorized replacement.



**CAUTION—POTENTIAL INJURY:** Do not use this product with extension cords, multioutlet power strips, multioutlet extenders, or UPS devices. The power capacity of these types of accessories can be easily overloaded by a laser printer and may result in a risk of fire, property damage, or poor printer performance.



**CAUTION—POTENTIAL INJURY:** Do not use this product with an inline surge protector. The use of a surge protection device may result in a risk of fire, property damage, or poor printer performance.




**CAUTION—SHOCK HAZARD:** To avoid the risk of electrical shock, do not place or use this product near water or wet locations.





**CAUTION—SHOCK HAZARD:** To avoid the risk of electrical shock, do not set up this product or make any electrical or cabling connections, such as the power cord, fax feature, or telephone, during a lightning storm.





**CAUTION—POTENTIAL INJURY:** Do not cut, twist, bind, crush, or place heavy objects on the power cord. Do not subject the power cord to abrasion or stress. Do not pinch the power cord between objects such as furniture and walls. If any of these things happen, a risk of fire or electrical shock results. Inspect the power cord regularly for signs of such problems. Remove the power cord from the electrical outlet before inspecting it.

 **CAUTION—SHOCK HAZARD:** To avoid the risk of electrical shock, make sure that all external connections (such as Ethernet and telephone system connections) are properly installed in their marked plug-in ports.


 **CAUTION—SHOCK HAZARD:** To avoid the risk of electrical shock, if you are accessing the controller board or installing optional hardware or memory devices sometime after setting up the printer, then turn the printer off, and unplug the power cord from the electrical outlet before continuing. If you have any other devices attached to the printer, then turn them off as well, and unplug any cables going into the printer.


 **CAUTION—SHOCK HAZARD:** To avoid the risk of electrical shock when cleaning the exterior of the printer, unplug the power cord from the electrical outlet and disconnect all cables from the printer before proceeding.


 **CAUTION—POTENTIAL INJURY:** If the printer weight is greater than 20 kg (44 lb), then it may require two or more people to lift it safely.


 **CAUTION—POTENTIAL INJURY:** When moving the printer, follow these guidelines to avoid personal injury or printer damage:

- Make sure that all doors and trays are closed.
- Turn off the printer, and then unplug the power cord from the electrical outlet.
- Disconnect all cords and cables from the printer.
- If the printer has separate floor-standing optional trays or output options attached to it, then disconnect them before moving the printer.
- If the printer has a caster base, then carefully roll it to the new location. Use caution when passing over thresholds and breaks in flooring.
- If the printer does not have a caster base but is configured with optional trays or output options, then remove the output options and lift the printer off the trays. Do not try to lift the printer and any options at the same time.
- Always use the handholds on the printer to lift it.
- Any cart used to move the printer must have a surface able to support the full footprint of the printer.
- Any cart used to move the hardware options must have a surface able to support the dimensions of the options.
- Keep the printer in an upright position.
- Avoid severe jarring movements.
- Make sure that your fingers are not under the printer when you set it down.
- Make sure that there is adequate clearance around the printer.

 **CAUTION—TIPPING HAZARD:** Installing one or more options on your printer or MFP may require a caster base, furniture, or other feature to prevent instability causing possible injury. For more information on supported configurations, contact the place where you purchased the printer.

 **CAUTION—TIPPING HAZARD:** To reduce the risk of equipment instability, load each tray separately. Keep all other trays closed until needed.

 **CAUTION—HOT SURFACE:** The inside of the printer might be hot. To reduce the risk of injury from a hot component, allow the surface to cool before touching it.

 **CAUTION—PINCH HAZARD:** To avoid the risk of a pinch injury, use caution in areas marked with this label. Pinch injuries may occur around moving parts, such as gears, doors, trays, and covers.



**CAUTION—POTENTIAL INJURY:** This product uses a laser. Use of controls or adjustments or performance of procedures other than those specified in the *User's Guide* may result in hazardous radiation exposure.



**CAUTION—POTENTIAL INJURY:** The lithium battery in this product is not intended to be replaced. There is a danger of explosion if a lithium battery is incorrectly replaced. Do not recharge, disassemble, or incinerate a lithium battery. Discard used lithium batteries according to the manufacturer's instructions and local regulations.

This product is designed, tested, and approved to meet strict global safety standards with the use of specific manufacturer's components. The safety features of some parts may not always be obvious. The manufacturer is not responsible for the use of other replacement parts.

Refer service or repairs, other than those described in the user documentation, to a service representative.

This product uses a printing process that heats the print media, and the heat may cause the media to release emissions. You must understand the section in your operating instructions that discusses the guidelines for selecting print media to avoid the possibility of harmful emissions.

This product may produce small amounts of ozone during normal operation, and may be equipped with a filter designed to limit ozone concentrations to levels well below the recommended exposure limits. To avoid high ozone concentration levels during extensive usage, install this product in a well-ventilated area and replace the ozone and exhaust filters if instructed to do so in the product maintenance instructions. If there are no references to filters in the product maintenance instructions, then there are no filters requiring replacement for this product.

**SAVE THESE INSTRUCTIONS.**

# Learning about the printer

## Selecting a location for the printer

When selecting a location for the printer, leave enough room to open trays, covers, and doors and to install hardware options.

- Set up the printer near an electrical outlet.



**CAUTION—POTENTIAL INJURY:** To avoid the risk of fire or electrical shock, connect the power cord to an appropriately rated and properly grounded electrical outlet that is near the product and easily accessible.

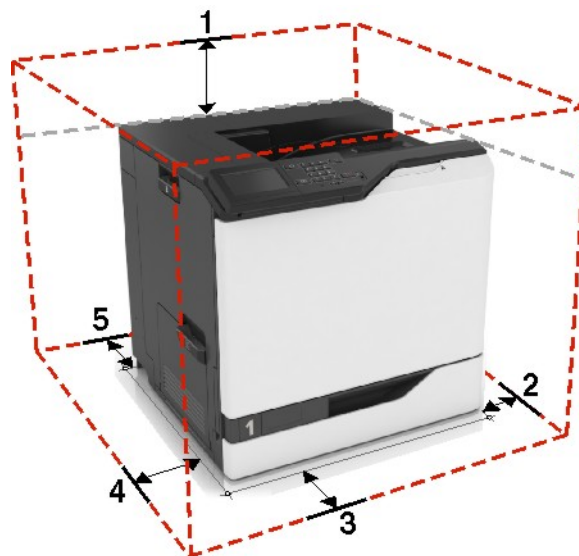


**CAUTION—SHOCK HAZARD:** To avoid the risk of electrical shock, do not place or use this product near water or wet locations.

- Make sure that airflow in the room meets the latest revision of the ASHRAE 62 standard or the CEN Technical Committee 156 standard.
- Provide a flat, sturdy, and stable surface.
- Keep the printer:
  - Clean, dry, and free of dust.
  - Away from stray staples and paper clips.
  - Away from the direct airflow of air conditioners, heaters, or ventilators.
  - Free from direct sunlight and humidity extremes.
- Observe the recommended temperatures and avoid fluctuations:


Ambient temperature	10 to 32.2°C (50 to 90°F)
Storage temperature	-40 to 43.3°C (-40 to 110°F)

- Allow the following recommended amount of space around the printer for proper ventilation:

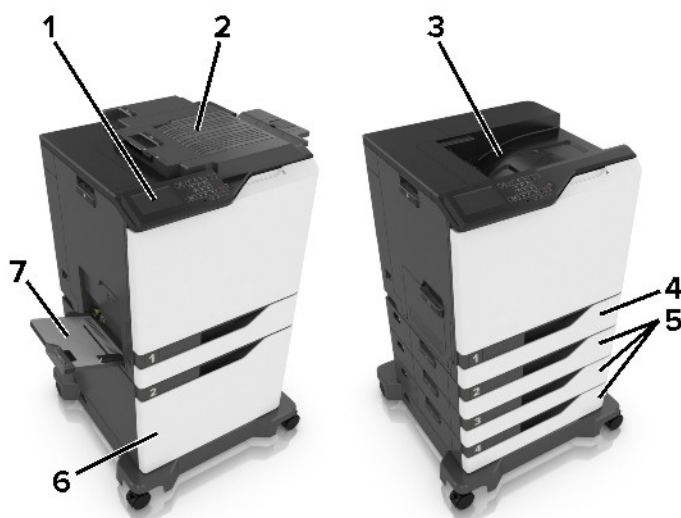


1	Top	305 mm (12 in.)
2	Right side	152 mm (6 in.)
3	Front	381 mm (15 in.)
4	Left side	457 mm (18 in.)
5	Rear	203 mm (8 in.)

## Printer configurations

 **CAUTION—TIPPING HAZARD:** Installing one or more options on your printer or MFP may require a caster base, furniture, or other feature to prevent instability causing possible injury. For more information on supported configurations, contact the place where you purchased the printer.

You can configure your printer by adding three optional 550-sheet trays or an optional 2200-sheet tray.



1	Control panel
2	Staple finisher
3	Standard bin
4	Standard 550-sheet tray
5	Optional 550-sheet trays
6	Optional 2200-sheet tray
7	Multipurpose feeder

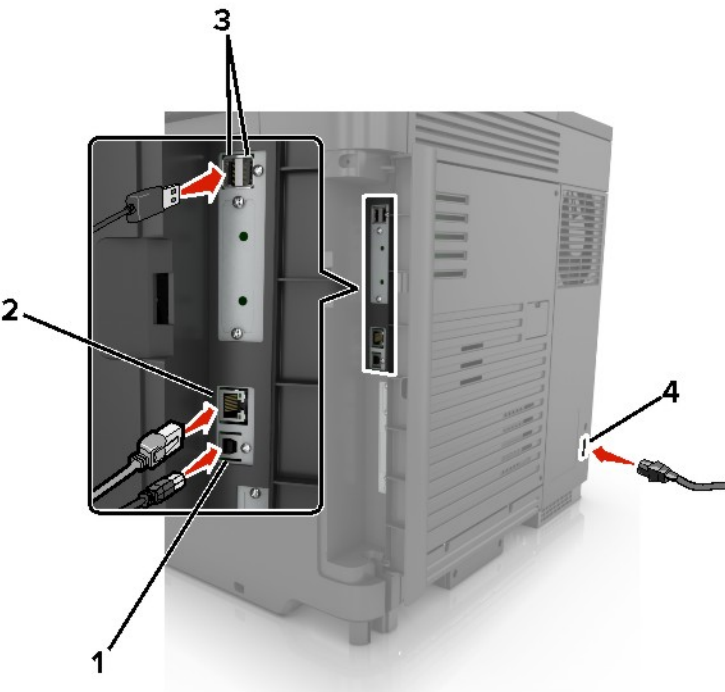
# Attaching cables

**CAUTION—POTENTIAL INJURY:** To avoid the risk of fire or electrical shock, connect the power cord to an appropriately rated and properly grounded electrical outlet that is near the product and easily accessible.

**CAUTION—POTENTIAL INJURY:** To avoid the risk of fire or electrical shock, use only the power cord provided with this product or the manufacturer's authorized replacement.

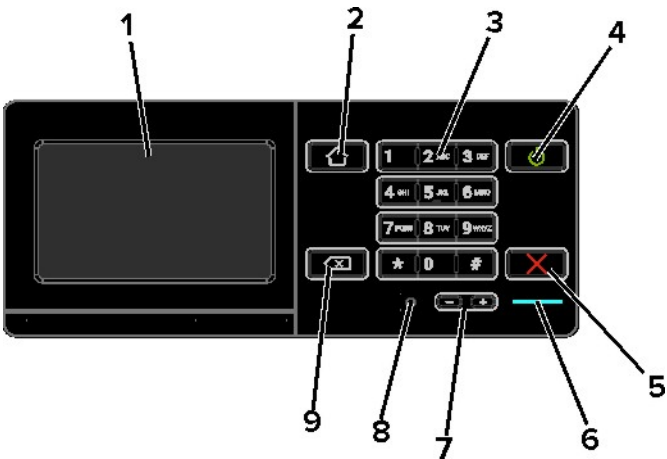
**CAUTION—POTENTIAL INJURY:** To avoid the risk of electrical shock, do not set up this product or make any electrical or cabling connections, such as the power cord, fax feature, or telephone, during a lightning storm.

**Warning—Potential Damage:** To avoid loss of data or printer malfunction, do not touch the USB cable, any wireless network adapter, or the printer in the areas shown while actively printing.



	Use the	To
1	USB printer port	Connect the printer to a computer.
2	Ethernet port	Connect the printer to an Ethernet network.
3	USB ports	Attach a keyboard or any compatible options.
4	Power cord socket	Connect the printer to a properly grounded electrical outlet.

# Using the control panel



	Use the	To
1	Display	<ul style="list-style-type: none"><li>• View the printer messages and supply status.</li><li>• Set up and operate the printer.</li></ul>
2	Home button	Go to the home screen.
3	Keypad	Enter numbers or symbols in an input field.
4	Power button	<ul style="list-style-type: none"><li>• Turn on or turn off the printer.</li></ul> <p><b>Note:</b> To turn off the printer, press and hold the power button for five seconds.</p> <ul style="list-style-type: none"><li>• Set the printer to Sleep or Hibernate mode.</li><li>• Wake the printer from Sleep or Hibernate mode.</li></ul>
5	Stop or Cancel button	Stop the current job.
6	Indicator light	Check the status of the printer.
7	Volume buttons	Adjust the volume of the headset or speaker.
8	Headset or speaker port	Attach a headset or speaker.
9	Backspace button	Move the cursor backward and delete a character in an input field.

## Understanding the status of the power button and indicator light

Indicator light	Printer status
Off	The printer is off or in Hibernate mode.
Blue	The printer is ready or processing data.
Red	The printer requires user intervention.

Power button light	Printer status
Off	The printer is off, ready, or processing data.
Solid amber	The printer is in sleep mode.
Blinking amber	The printer is in hibernate mode.

## Using the home screen

**Note:** Your home screen may vary depending on your home screen customization settings, administrative setup, and active embedded solutions.



Touch	To
<b>1</b>	Status/Supplies <ul style="list-style-type: none"> <li>Show a warning or error message whenever the printer requires intervention to continue processing.</li> <li>View more information on the printer warning or message, and on how to clear it.</li> </ul> <b>Note:</b> You can also access this setting by touching the top section of the home screen.
<b>2</b>	Job Queue <p>Show all the current print jobs.</p> <b>Note:</b> You can also access this setting by touching the top section of the home screen.
<b>3</b>	Change Language Change the language on the display.
<b>4</b>	Settings Access the printer menus.
<b>5</b>	Held Jobs Show the print jobs that are held in the printer memory.
<b>6</b>	USB Drive Print photos and documents from a flash drive.
<b>7</b>	Address Book Manage a contact list that other applications on the printer can access.



## Printing the Menu Settings Page

From the home screen, touch **Settings > Reports > Menu Settings Page**.

## Installing the printer software

- 1 Obtain a copy of the software installer package.
  - From our website.
  - From the place where you purchased the printer.
- 2 Run the installer, and then follow the instructions.

# Setting up and using the home screen applications

## Customizing the home screen

- 1 From the control panel, touch **Settings** > **Device** > **Visible Home Screen Icons**.
- 2 Select the icons that you want to appear on the home screen.
- 3 Apply the changes.

## Setting up Forms and Favorites

- 1 Open a Web browser, and then type the printer IP address in the address field.

**Notes:**

- View the printer IP address on the printer home screen. The IP address appears as four sets of numbers separated by periods, such as 123.123.123.123.
- If you are using a proxy server, then temporarily disable it to load the Web page correctly.

- 2 Click **Apps** > **Forms and Favorites** > **Configure**.

- 3 Click **Add**, and then customize the settings.

**Notes:**

- To make sure that the location settings of the bookmark are correct, type the IP address of the host computer where the bookmark is located.
- Make sure that the printer has access rights to the folder where the bookmark is located.

- 4 Apply the changes.

## Configuring Eco-Settings

- 1 From the home screen, touch **Eco-Settings**.
- 2 Configure Eco-Mode or Schedule Power Modes.
- 3 Apply the changes.

## Managing bookmarks

### Creating bookmarks

Use bookmarks to print frequently accessed documents that are stored in servers or on the web.

- 1 Open a web browser, and then type the printer IP address in the address field.

**Notes:**

- View the printer IP address on the printer home screen. The IP address appears as four sets of numbers separated by periods, such as 123.123.123.123.
- If you are using a proxy server, then temporarily disable it to load the web page correctly.

**2** Click **Bookmarks > Add Bookmark**, and then type a bookmark name.

**3** Select an Address protocol type, and then do one of the following:

- For HTTP and HTTPS, type the URL that you want to bookmark.
- For HTTPS, make sure to use the host name instead of the IP address. For example, type **myWebsite.com/sample.pdf** instead of typing **123.123.123.123/sample.pdf**. Make sure that the host name also matches the Common Name (CN) value in the server certificate. For more information on obtaining the CN value in the server certificate, see the help information for your web browser.
- For FTP, type the FTP address. For example, **myServer/myDirectory**. Enter the FTP port. Port 21 is the default port for sending commands.
- For SMB, type the network folder address. For example, **myServer/myShare/myFile.pdf**. Type the network domain name.
- If necessary, select the Authentication type for FTP and SMB.

To limit access to the bookmark, enter a PIN.

**Note:** The application supports the following file types: PDF, JPEG, TIFF, and HTML-based web pages. Other file types such as DOCX and XLXS are supported in some printer models.

**4** Click **Save**.

## Creating folders

**1** Open a web browser, and then type the printer IP address in the address field.

**Notes:**

- View the printer IP address on the printer home screen. The IP address appears as four sets of numbers separated by periods, such as 123.123.123.123.
- If you are using a proxy server, then temporarily disable it to load the web page correctly.

**2** Click **Bookmarks > Add Folder**, and then type a folder name.

**Note:** To limit access to the folder, enter a PIN.

**3** Click **Save**.

**Note:** You can create folders or bookmarks inside a folder. To create a bookmark, see [“Creating bookmarks” on page 14](#).

## Managing contacts

### Adding contacts

**1** Open a web browser, and then type the printer IP address in the address field.

**Notes:**

- View the printer IP address on the printer home screen. The IP address appears as four sets of numbers separated by periods, such as 123.123.123.123.
- If you are using a proxy server, then temporarily disable it to load the web page correctly.

**2** Click **Address Book**.

**3** From the Contacts section, add a contact.

**Note:** You can assign the contact to one or more groups.

**4** If necessary, specify a login method to allow application access.

**5** Apply the changes.

## Adding groups

**1** Open a web browser, and then type the printer IP address in the address field.

**Notes:**

- View the printer IP address on the printer home screen. The IP address appears as four sets of numbers separated by periods, such as 123.123.123.123.
- If you are using a proxy server, then temporarily disable it to load the web page correctly.

**2** Click **Address Book**.

**3** From the Contact Groups section, add a group name.

**Note:** You can assign one or more contacts to the group.

**4** Apply the changes.

## Editing contacts or groups

**1** Open a web browser, and then type the printer IP address in the address field.

**Notes:**

- View the printer IP address on the printer home screen. The IP address appears as four sets of numbers separated by periods, such as 123.123.123.123.
- If you are using a proxy server, then temporarily disable it to load the web page correctly.

**2** Click **Address Book**.

**3** Do either of the following:

- From the Contacts section, click a contact name, and then edit the information.
- From the Contact Groups section, click a group name, and then edit the information.

**4** Apply the changes.

## Deleting contacts or groups

**1** Open a web browser, and then type the printer IP address in the address field.

**Notes:**

- View the printer IP address on the printer home screen. The IP address appears as four sets of numbers separated by periods, such as 123.123.123.123.
- If you are using a proxy server, then temporarily disable it to load the web page correctly.

**2** Click **Address Book**.**3** Do either of the following:

- From the Contacts section, select a contact that you want to delete.
- From the Contact Groups section, select a group name that you want to delete.

# Loading paper and specialty media

## Setting the size and type of the specialty media

The trays automatically detect the size of plain paper. For specialty media like labels, card stock, or envelopes, do the following:

- 1 From the home screen, navigate to:  
**Settings > Paper > Tray Configuration > Paper Size/Type** > select a paper source
- 2 Set the size and type of the specialty media.

## Configuring Universal paper settings

- 1 From the home screen, touch **Settings > Paper > Media Configuration > Universal Setup**.
- 2 Configure the settings.

## Loading trays



**CAUTION—TIPPING HAZARD:** To reduce the risk of equipment instability, load each tray separately. Keep all other trays closed until needed.

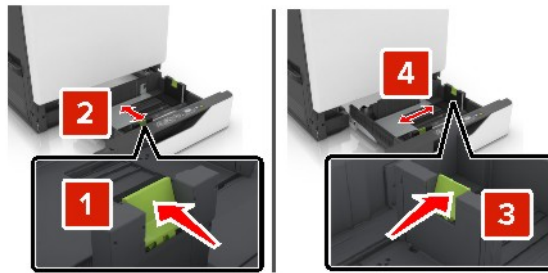
- 1 Pull out the tray.

**Note:** To avoid paper jams, do not remove trays while the printer is busy.



- 2 Adjust the guides to match the size of the paper that you are loading.

**Note:** Use the indicators on the bottom of the tray to position the guides.



**3** Flex, fan, and align the paper edges before loading.



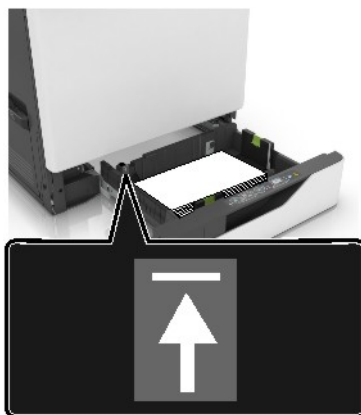
**4** Load the paper with the printable side faceup.

**Note:** Load envelopes only in the optional envelope tray.

**Warning—Potential Damage:** Do not use envelopes with stamps, clasps, snaps, windows, coated linings, or self-stick adhesives in the optional envelope tray.

**Notes:**

- Load letterhead faceup with the header on the left side of the tray for one-sided printing.
- Load letterhead facedown with the header on the right side of the tray for two-sided printing.
- Load letterhead faceup with the header on the right side of the tray for one-sided print jobs that require finishing.
- Load letterhead facedown with the header on the left side of the tray for two-sided print jobs that require finishing.
- Load pre-punched paper with the holes toward the front or left side of the tray.
- Load envelopes with the flap side down and against the back side of the tray. Load European envelopes with the flap side down and against the left side of the tray.
- Do not slide paper into the tray.
- Make sure that the stack height is below the maximum paper fill indicator. Overfilling may cause paper jams.

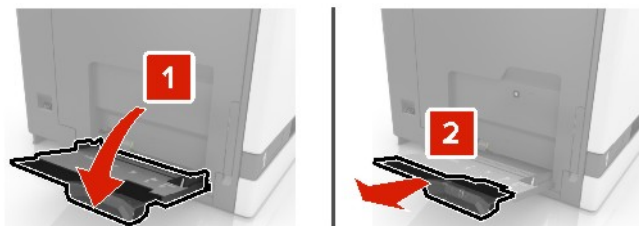


**5** Insert the tray.

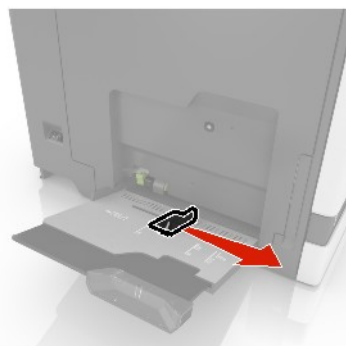
If loading a paper type other than plain, set the paper size and paper type in the Paper menu to match the paper loaded.

## Loading the multipurpose feeder

**1** Open the multipurpose feeder.



**2** Adjust the guide to match the size of the paper you are loading.



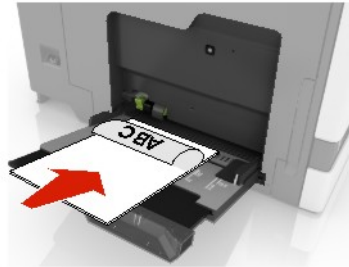
**3** Flex, fan, and align the paper edges before loading.



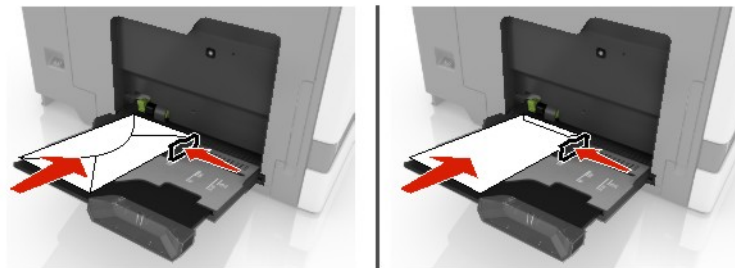


**4** Load the paper.

- Load paper, card stock, and transparencies with the printable side facedown and the top edge entering the printer first.



- Load envelopes with the flap side up and against the left side of the paper guide. Load European envelopes with the flap side up and entering the printer first.



**Warning—Potential Damage:** Do not use envelopes with stamps, clasps, snaps, windows, coated linings, or self-stick adhesives.

**5** From the control panel, set the paper size and type to match the paper loaded in the tray.

## Linking trays

**1** Open a web browser, and then type the printer IP address in the address field.**Notes:**

- View the printer IP address on the printer home screen. The IP address appears as four sets of numbers separated by periods, such as 123.123.123.123.
- If you are using a proxy server, then temporarily disable it to load the web page correctly.

**2** Click **Settings > Paper > Tray Configuration**.**3** Set the same paper size and paper type for the trays that you are linking.**4** Save the settings.**5** Click **Settings > Device > Maintenance > Configuration Menu > Tray Configuration**.**6** Set Tray Linking to **Automatic**.**7** Save the settings.

To unlink trays, make sure that no trays have the same paper size and paper type settings.

**Warning—Potential Damage:** The temperature of the fuser varies according to the specified paper type. To avoid printing issues, match the paper type setting in the printer with the paper loaded in the tray.

# Paper support

## Supported paper sizes

### Supported input sizes

Paper size	Dimensions	550-sheet tray	2200-sheet tray	Envelope tray	Multipurpose feeder <sup>1</sup>	Two-sided printing
<b>3 x 5</b>	76.2 x 127 mm (3 x 5 in.)	X	X	X	✓	X
<b>4 x 6</b>	101.6 x 152.4 mm (4 x 6 in.)	X	X	X	✓	X
<b>A4</b>	210 x 297 mm (8.3 x 11.7 in.)	✓	✓	X	✓	✓
<b>A5 landscape</b>	210 x 148 mm (8.3 x 5.8 in.)	✓	✓	X	✓	✓
<b>A5 portrait<sup>2</sup></b>	148 x 210 mm (5.8 x 8.3 in.)	✓	X	X	✓	✓
<b>A6</b>	105 x 148 mm (4.1 x 5.8 in.)	X	X	X	✓	✓
<b>Banner</b>	Max width: 215.9 mm (8.5 in.) Max length: 1320.8 mm (52 in.)	X	X	X	✓	X
<b>Executive</b>	184.2 x 266.7 mm (7.3 x 10.5 in.)	✓	X	X	✓	✓
<b>Folio</b>	215.9 x 330.2 mm (8.5 x 13 in.)	✓	✓	X	✓	✓
<b>JIS B5</b>	182 x 257 mm (7.2 x 10.1 in.)	✓	X	X	✓	✓
<b>Legal</b>	215.9 x 355.6 mm (8.5 x 14 in.)	✓	✓	X	✓	✓
<b>Letter</b>	215.9 x 279.4 mm (8.5 x 11 in.)	✓	✓	X	✓	✓
<b>Oficio</b>	216 x 340 mm (8.5 x 13.4 in.)	✓	✓	X	✓	✓

<sup>1</sup> This paper source does not support automatic size sensing.

<sup>2</sup> A5 portrait reports as Universal in the standard and optional 550-sheet trays.

Paper size	Dimensions	550-sheet tray	2200-sheet tray	Envelope tray	Multipurpose feeder <sup>1</sup>	Two-sided printing
<b>Statement</b>	139.7 x 215.9 mm (5.5 x 8.5 in.)	✓	X	X	✓	✓
<b>Universal</b>	139.7 x 148 mm to 215.9 x 355.6 mm (5.5 x 5.8 in. to 8.5 x 14 in.)	X	X	X	✓	X
<b>Universal</b>	76.2 x 127 mm to 229 x 359.9 mm (3 x 5 in. to 9 x 14.2 in.)	✓	X	X	✓	✓
<b>Universal</b>	98.4 x 162 mm to 176 x 250 mm (3.9 x 6.4 in. to 6.9 x 9.8 in.)	X	X	✓	X	X
<b>Universal</b>	210 x 215.9 mm to 210 x 1321 mm (8.27 x 8.5 in. to 8.27 x 52 in.)	X	X	X	✓	X
<b>7 3/4 Envelope</b>	98 x 190.5 mm (3.9 x 7.5 in.)	X	X	✓	✓	X
<b>9 Envelope</b>	98.4 x 225.4 mm (3.86 x 8.9 in.)	X	X	✓	✓	X
<b>10 Envelope</b>	104.8 x 241.3 mm (4.1 x 9.5 in.)	X	X	✓	✓	X
<b>B5 Envelope</b>	176 x 250 mm (6.9 x 9.8 in.)	X	X	✓	✓	X
<b>C4 Envelope</b>	229 x 324 mm (9 x 13 in.)	X	X	X	✓	X
<b>C5 Envelope</b>	162 x 229 mm (6.4 x 9 in.)	X	X	✓	✓	X
<b>DL Envelope</b>	110 x 220 mm (4.3 x 8.7 in.)	X	X	✓	✓	X
<b>Other Envelope</b>	98.4 x 162 mm to 229 x 359.9 mm (3.9 x 6.4 in. to 9 x 14.2 in.)	X	X	X	✓	X

<sup>1</sup> This paper source does not support automatic size sensing.

<sup>2</sup> A5 portrait reports as Universal in the standard and optional 550-sheet trays.

## Supported output sizes

Paper size	Dimensions	Standard bin	Staple finisher	
			Offset	Staple
<b>3 x 5</b>	76.2 x 127 mm (3 x 5 in.)	✓	X	X
<b>4 x 6</b>	101.6 x 152.4 mm (4 x 6 in.)	✓	X	X
<b>A4</b>	210 x 297 mm (8.3 x 11.7 in.)	✓	✓	✓
<b>A5 landscape</b>	210 x 148 mm (8.3 x 5.8 in.)	✓	✓	X
<b>A5 portrait*</b>	148 x 210 mm (5.8 x 8.3 in.)	✓	X	X
<b>A6</b>	105 x 148 mm (4.1 x 5.8 in.)	✓	X	X
<b>Executive</b>	184.2 x 266.7 mm (7.3 x 10.5 in.)	✓	✓	X
<b>Folio</b>	215.9 x 330.2 mm (8.5 x 13 in.)	✓	✓	✓
<b>JIS B5</b>	182 x 257 mm (7.2 x 10.1 in.)	✓	✓	X
<b>Legal</b>	215.9 x 355.6 mm (8.5 x 14 in.)	✓	✓	✓
<b>Letter</b>	215.9 x 279.4 mm (8.5 x 11 in.)	✓	✓	✓
<b>Oficio</b>	216 x 340 mm (8.5 x 13.4 in.)	✓	✓	✓
<b>Statement</b>	139.7 x 215.9 mm (5.5 x 8.5 in.)	✓	X	X
<b>Universal</b>	139.7 x 148 mm to 215.9 x 359.9 mm (5.5 x 5.8 in. to 8.5 x 14.2 in.)	✓	X	X
<b>Universal</b>	76.2 x 127 mm to 229 x 359.9 mm (3 x 5 in. to 9 x 14.2 in.)	✓	X	✓
<b>Universal</b>	98.4 x 162 mm to 176 x 250 mm (3.9 x 6.4 in. to 6.9 x 9.8 in.)	✓	X	X
<b>Universal</b>	210 x 215.9 mm to 210 x 1321 mm (8.27 x 8.5 in. to (8.27 x 52 in.)	✓	X	X

\* A5 portrait reports as Universal in the standard and optional 550-sheet trays.

Paper size	Dimensions	Standard bin	Staple finisher	
			Offset	Staple
<b>7 3/4 Envelope</b>	98 x 190.5 mm (3.9 x 7.5 in.)	✓	X	X
<b>9 Envelope</b>	98.4 x 225.4 mm (3.86 x 8.9 in.)	✓	X	X
<b>10 Envelope</b>	104.8 x 241.3 mm (4.1 x 9.5 in.)	✓	X	X
<b>B5 Envelope</b>	176 x 250 mm (6.9 x 9.8 in.)	✓	X	X
<b>C4 Envelope</b>	229 x 324 mm (9 x 13 in.)	✓	X	X
<b>C5 Envelope</b>	162 x 229 mm (6.4 x 9 in.)	✓	X	X
<b>DL Envelope</b>	110 x 220 mm (4.3 x 8.7 in.)	✓	X	X
<b>Other Envelope</b>	98.4 x 162 mm to 229 x 359.9 mm (3.9 x 6.4 in. to (9 x 14.2 in.)	✓	X	X
* A5 portrait reports as Universal in the standard and optional 550-sheet trays.				

## Supported paper types

### Supported input types

**Note:** Labels, envelopes, and card stock always print at reduced speed.

Paper type	550-sheet tray	2200-sheet tray	Envelope tray	Multipurpose feeder	Two-sided printing
<b>Plain Paper</b>	✓	✓	X	✓	✓
<b>Card Stock <sup>2</sup></b>	✓ <sup>1</sup>	X	X	✓ <sup>1</sup>	✓
<b>Recycled</b>	✓	✓	X	✓	✓
<b>Glossy</b>	✓	✓	X	✓	✓
<b>Heavy Glossy</b>	✓	✓	X	✓	✓
<b>Labels</b>	✓	X	X	✓	X
<b>Vinyl Labels</b>	✓	X	X	✓	X

<sup>1</sup> This paper source supports up to 176 g/m<sup>2</sup> of card stock weight.

<sup>2</sup> Card stock that weighs more than 176 g/m<sup>2</sup> is supported only in one-sided printing using the standard 550-sheet tray.

Paper type	550-sheet tray	2200-sheet tray	Envelope tray	Multipurpose feeder	Two-sided printing
<b>Bond</b>	✓	✓	X	✓	✓
<b>Envelope</b>	X	X	✓	✓	X
<b>Rough Envelope</b>	X	X	✓	✓	X
<b>Transparency</b>	X	X	X	✓	X
<b>Letterhead</b>	✓	✓	X	✓	✓
<b>Preprinted</b>	✓	✓	X	✓	✓
<b>Colored Paper</b>	✓	✓	X	✓	✓
<b>Light Paper</b>	✓	✓	X	✓	✓
<b>Heavy Paper</b>	✓	✓	X	✓	✓
<b>Rough Cotton</b>	✓	✓	X	✓	✓

<sup>1</sup> This paper source supports up to 176 g/m<sup>2</sup> of card stock weight.

<sup>2</sup> Card stock that weighs more than 176 g/m<sup>2</sup> is supported only in one-sided printing using the standard 550-sheet tray.

## Supported output types

Paper type	Staple finisher		
	Non-finishing	Offset	Staple
<b>Plain Paper</b>	✓	✓	✓
<b>Card Stock</b>	✓	✓	X
<b>Transparency</b>	✓	X	X
<b>Recycled</b>	✓	✓	✓
<b>Glossy</b>	✓	✓	X
<b>Heavy Glossy</b>	✓	✓	X
<b>Labels</b>	✓	X	X
<b>Vinyl Labels</b>	✓	X	X
<b>Bond</b>	✓	✓	✓
<b>Envelope</b>	✓	✓	X
<b>Rough Envelope</b>	✓	✓	X
<b>Letterhead</b>	✓	✓	✓
<b>Preprinted</b>	✓	✓	✓
<b>Colored Paper</b>	✓	✓	✓

Paper type	Staple finisher		
	Non-finishing	Offset	Staple
Light Paper	✓	✓	✓
Heavy Paper	✓	✓	✓
Rough Cotton	✓	✓	✓

## Supported paper weights

Paper type	Standard 550-sheet tray	2200-sheet tray	Envelope tray	Multipurpose feeder
Plain Paper <sup>1,2</sup>	60–176 g/m <sup>2</sup> (16–47 lb) <sup>3</sup>	60–120 g/m <sup>2</sup> (16–32 lb)	N/A	60–176 g/m <sup>2</sup> (16–47 lb)
Banner Paper	N/A	N/A	N/A	90–105 g/m <sup>2</sup> (24–28 lb)
Glossy	88–176 g/m <sup>2</sup> (60–120 lb)	N/A	N/A	88–176 g/m <sup>2</sup> (60–120 lb)
Card stock	88–300 g/m <sup>2</sup> (60–192 lb)	N/A	N/A	163–176 g/m <sup>2</sup> (90–120 lb)
Labels	88–300 g/m <sup>2</sup> (60–192 lb)	N/A	N/A	199–220 g/m <sup>2</sup> (53–59 lb)
Envelopes	N/A	N/A	60–105 g/m <sup>2</sup> (16–28 lb) <sup>4, 5</sup>	60–105 g/m <sup>2</sup> (16–28 lb)

<sup>1</sup> Grain short paper that weighs at least 90 g/m<sup>2</sup> (24 lb) is supported in two-sided printing.

<sup>2</sup> Recycled paper that weighs 75–120 g/m<sup>2</sup> (20–32 lb) is supported in two-sided printing.


<sup>3</sup> The paper weight is also supported in two-sided printing.

<sup>4</sup> 100% cotton content maximum weight is 24 lb bond.

<sup>5</sup> 28 lb-bond envelopes are limited to 25% cotton content.



# Printing

 **CAUTION—PINCH HAZARD:** To avoid the risk of a pinch injury, use caution in areas marked with this label. Pinch injuries may occur around moving parts, such as gears, doors, trays, and covers.

## Printing from a computer

**Note:** For labels, card stock, and envelopes, set the paper size and type in the printer before printing the document.

- 1 From the document that you are trying to print, open the Print dialog.
- 2 If necessary, adjust the settings.
- 3 Print the document.

## Printing forms

- 1 From the home screen, navigate to:  
**Forms and Favorites** > select form > **Print**
- 2 If necessary, configure the print settings.
- 3 Send the print job.



## Printing from a mobile device

### Printing from a mobile device using Google Cloud Print

Google Cloud Print™ is a printing service that allows you to print to any Google Cloud Print-ready printer.

Before you begin, make sure that:

- The printer is registered to the Google Cloud Print server.
- The Cloud Print plugin is downloaded from the Google Play™ store and is enabled in the mobile device.

- 1 From your Android™ mobile device, open a document or select a document from your file manager.
- 2 Tap  > **Print**.
- 3 Select a printer, and then tap .

### Printing from a mobile device using AirPrint



The AirPrint software feature is a mobile printing solution that allows you to print directly from Apple devices to an AirPrint-certified printer.

**Notes:**




- Make sure that the Apple device and the printer are connected to the same network. If the network has multiple wireless hubs, then make sure that both devices are connected to the same subnet.
- This application is supported only in some Apple devices.

- 1 From your mobile device, select a document from your file manager or launch a compatible application.
- 2 Tap the share icon, and then tap **Print**.
- 3 Select a printer.  
If necessary, adjust the settings.
- 4 Print the document.

**Printing from a mobile device using Wi-Fi Direct®**

Wi-Fi Direct® is a printing service that lets you print to any Wi-Fi Direct-ready printer.

**Note:** Make sure that the mobile device is connected to the printer wireless network. For more information, see [“Connecting a mobile device to the printer wireless network” on page 81](#).

- 1 From your mobile device, launch a compatible application or select a document from your file manager.
- 2 Depending on your mobile device, do one of the following:
  - Tap  > **Print**.
  - Tap  > **Print**.
  - Tap  > **Print**.
- 3 Select a printer, and then adjust the settings, if necessary.
- 4 Print the document.

## Printing from a flash drive

- 1 Insert the flash drive.



### Notes:

- If you insert the flash drive when an error message appears, then the printer ignores the flash drive.
- If you insert the flash drive while the printer is processing other print jobs, then **Busy** appears on the display.

- 2 From the display, touch the document that you want to print.

If necessary, configure other print settings.

- 3 Send the print job.

To print another document, touch **USB Drive**.

**Warning—Potential Damage:** To avoid loss of data or printer malfunction, do not touch the flash drive or the printer in the area shown while actively printing, reading, or writing from the memory device.



## Supported flash drives and file types

### Flash drives

#### Notes:

- The printer supports high-speed USB flash drives with full-speed standard.
- USB flash drives must support the File Allocation Table (FAT) system.

Many flash drives are tested and approved for use with the printer. For more information, contact the place where you purchased the printer.

### File types

Documents:

- .doc or .docx
- .xls or .xlsx
- .ppt or .pptx
- .pdf
- .xps

Images:

- .dcx
- .gif
- .jpeg or .jpg
- .bmp
- .pcx
- .tiff or .tif
- .png

## Configuring confidential jobs

1 From the control panel, navigate to:

**Settings > Security > Confidential Print Setup**

2 Configure the settings.

Use	To
Max Invalid PIN	Set the number of times an invalid PIN can be entered. <b>Note:</b> When the limit is reached, the print jobs for that user name are deleted.
Confidential Job Expiration	Set the expiration time for confidential print jobs. <b>Note:</b> Confidential held jobs are stored in the printer until they are released or deleted manually.
Repeat Job Expiration	Set the expiration time for a repeat print job. <b>Note:</b> Repeat held jobs are stored in the printer memory for reprinting.

Use	To
Verify Job Expiration	Set the expiration time that the printer prints a copy before printing the remaining copies. <b>Note:</b> Verify jobs print one copy to check if it is satisfactory before printing the remaining copies.
Reserve Job Expiration	Set the expiration time that the printer stores print jobs. <b>Note:</b> Reserve held jobs are automatically deleted after printing.
Require All Jobs to be Held	Set the printer to hold all print jobs.
Keep duplicate documents	Set the printer to print all documents with the same file name.

## Printing confidential and other held jobs

- 1 With a document open, click **File > Print**.
- 2 Click **Properties, Preferences, Options, or Setup**.
- 3 Click **Print and Hold**.
- 4 Select **Use Print and Hold**, and then assign a user name.
- 5 Select the print job type (Confidential, Repeat, Reserve, or Verify).  
If the print job is confidential, then enter a four-digit PIN.
- 6 Click **OK** or **Print**.
- 7 From the printer home screen, release the print job.
  - For confidential print jobs, navigate to:  
**Held jobs** > select your user name > **Confidential** > enter the PIN > select the print job > configure the settings > **Print**
  - For other print jobs, navigate to:  
**Held jobs** > select your user name > select the print job > configure the settings > **Print**

## Printing a font sample list

- 1 From the home screen, touch **Settings > Reports > Print > Print Fonts**.
- 2 Touch **PCL Fonts** or **PS Fonts**.

## Printing a directory list

From the home screen, touch **Settings > Reports > Print > Print Directory**.

## Canceling a print job

### From the printer control panel

- 1 From the home screen, touch **Job Queue**.

**Note:** You can also access this setting by touching the top section of the home screen.

- 2 Select the job to cancel.

### From the computer

- 1 Depending on the operating system, do either of the following:
  - Open the printers folder, and then select your printer.
  - From the System Preferences in the Apple menu, navigate to your printer.
- 2 Select the job to cancel.

# Understanding the printer menus

## Menu map

Device	<ul style="list-style-type: none"> <li>• <a href="#">Preferences</a></li> <li>• <a href="#">Eco-Mode</a></li> <li>• <a href="#">Remote Operator Panel</a></li> <li>• <a href="#">Notifications</a></li> <li>• <a href="#">Power Management</a></li> </ul>	<ul style="list-style-type: none"> <li>• <a href="#">Accessibility</a></li> <li>• <a href="#">Restore Factory Defaults</a></li> <li>• <a href="#">Maintenance</a></li> <li>• <a href="#">Visible Home Screen Icons</a></li> <li>• <a href="#">About this Printer</a></li> </ul>
Print	<ul style="list-style-type: none"> <li>• <a href="#">Layout</a></li> <li>• <a href="#">Setup</a></li> <li>• <a href="#">Quality</a></li> <li>• <a href="#">Job Accounting</a></li> <li>• <a href="#">XPS</a></li> </ul>	<ul style="list-style-type: none"> <li>• <a href="#">PDF</a></li> <li>• <a href="#">PostScript</a></li> <li>• <a href="#">PCL</a></li> <li>• <a href="#">HTML</a></li> <li>• <a href="#">Image</a></li> </ul>
Paper	<ul style="list-style-type: none"> <li>• <a href="#">Tray Configuration</a></li> </ul>	<ul style="list-style-type: none"> <li>• <a href="#">Media Configuration</a></li> </ul>
USB Drive	<ul style="list-style-type: none"> <li>• <a href="#">Flash Drive Print</a></li> </ul>	
Network/Ports	<ul style="list-style-type: none"> <li>• <a href="#">Network Overview</a></li> <li>• <a href="#">Wireless</a></li> <li>• <a href="#">Ethernet</a></li> <li>• <a href="#">TCP/IP</a></li> <li>• <a href="#">SNMP</a></li> <li>• <a href="#">IPSec</a></li> <li>• <a href="#">802.1x</a></li> </ul>	<ul style="list-style-type: none"> <li>• <a href="#">LPD Configuration</a></li> <li>• <a href="#">HTTP/FTP Settings</a></li> <li>• <a href="#">USB</a></li> <li>• <a href="#">Restrict external network access</a></li> <li>• <a href="#">Google Cloud Print</a></li> <li>• <a href="#">Wi-Fi Direct</a></li> </ul>
Security	<ul style="list-style-type: none"> <li>• <a href="#">Login Methods</a></li> <li>• <a href="#">Schedule USB Devices</a></li> <li>• <a href="#">Security Audit Log</a></li> <li>• <a href="#">Login Restrictions</a></li> <li>• <a href="#">Confidential Print Setup</a></li> </ul>	<ul style="list-style-type: none"> <li>• <a href="#">Disk Encryption</a></li> <li>• <a href="#">Erase Temporary Data Files</a></li> <li>• <a href="#">Solutions LDAP Settings</a></li> <li>• <a href="#">Miscellaneous</a></li> </ul>
Reports	<ul style="list-style-type: none"> <li>• <a href="#">Menu Settings Page</a></li> <li>• <a href="#">Device</a></li> </ul>	<ul style="list-style-type: none"> <li>• <a href="#">Print</a></li> <li>• <a href="#">Network</a></li> </ul>
<a href="#">Help</a>	<ul style="list-style-type: none"> <li>• Print All Guides</li> <li>• Color Quality Guide</li> <li>• Connection Guide</li> <li>• Information Guide</li> </ul>	<ul style="list-style-type: none"> <li>• Media Guide</li> <li>• Moving Guide</li> <li>• Print Quality Guide</li> <li>• Supplies Guide</li> </ul>
<a href="#">Troubleshooting</a>	Print Quality Test Pages	

# Device

## Preferences

Menu item	Description
<b>Display Language</b>	Set the language of the text that appears on the display.
<b>Country/Region</b>	Identify the country or region that the printer is configured to operate.
<b>Run initial setup</b> Off* On	Run the setup wizard.
<b>Keyboard</b> Keyboard Type	Select a language as a keyboard type. <b>Note:</b> All the Keyboard Type values may not appear or may require special hardware be installed to appear.
<b>Displayed information</b> Display Text 1 (IP Address*) Display Text 2 (Date/Time*) Custom Text 1 Custom Text 2	Specify the information to appear on the home screen.
<b>Date and Time</b> Configure Current Date and Time Manually Set Date and Time Date Format (MM-DD-YYYY*) Time Format (12 hour A.M./P.M.*) Time Zone (UTC-5:00*) Network Time Protocol Enable NTP (On*) NTP Server Enable Authentication (None*)	Configure the printer date and time and network time protocol.
<b>Paper Sizes</b> U.S.* Metric	Specify the unit of measurement for paper sizes. <b>Note:</b> The country or region selected in the initial setup wizard determines the initial paper size setting.
<b>Screen Brightness</b> 20–100% (90*)	Adjust the brightness of the display.
<b>Flash Drive Access</b> Enabled* Disabled	Enable access to the flash drive.
<b>Audio Feedback</b> Button Feedback (On*) Volume (5*)	<ul style="list-style-type: none"> <li>• Enable audio feedback for button presses, panel interactions, paper loaded prompts, and error notifications.</li> <li>• Adjust the feedback volume.</li> </ul>
<b>Note:</b> An asterisk (*) next to a value indicates the factory default setting.	



Menu item	Description
<b>Screen Timeout</b> 5–300 seconds (60*)	Set the idle time before the display shows the home screen or before the printer logs out a user account automatically.
<b>Note:</b> An asterisk (*) next to a value indicates the factory default setting.	

## Eco-Mode

Menu item	Description
<b>Print</b> Sides (1-Sided*) Pages per Side (Off*) Toner Darkness (4*) Color Saver (Off*)	Configure the print settings of the printer.
<b>Note:</b> An asterisk (*) next to a value indicates the factory default setting.	

## Remote Operator Panel

Menu item	Description
<b>External VNC Connection</b> Don't Allow* Allow	Connect an external Virtual Network Computing (VNC) client to the remote control panel.
<b>Authentication Type</b> None* Standard Authentication	Set the authentication type when accessing the VNC client server.
<b>VNC Password</b>	Specify the password to connect to the VNC client server. <b>Note:</b> This menu item appears only if Authentication Type is set to Standard Authentication.
<b>Note:</b> An asterisk (*) next to a value indicates the factory default setting.	

## Notifications

Menu item	Description
<b>Error Lighting</b> Off On*	Set the indicator light to come on when a printer error occurs. <b>Note:</b> This menu item appears only in some printer models.
<b>Alarm Control</b> Off Single* Continuous	Set the number of times that the alarm sounds when the printer requires user intervention.
<b>Note:</b> An asterisk (*) next to a value indicates the factory default setting.	

Menu item	Description
<b>Supplies</b> Show Supply Estimates (Show estimates*) Cartridge Alarm (Single*)	<ul style="list-style-type: none"> <li>• Show the estimated status of the supplies.</li> <li>• Set the number of times that the alarm sounds when the toner cartridge is low.</li> </ul>
<b>E-mail Alerts Setup</b> E-mail Setup Primary SMTP Gateway Primary SMTP Gateway Port (25*) Secondary SMTP Gateway Secondary SMTP Gateway Port (25*) SMTP Timeout (30 seconds*) Reply Address Always use SMTP default Reply Address (Off*) Use SSL/TLS (Disabled*) Require Trusted Certificate (On*) SMTP Server Authentication (No authentication required*) Device-Initiated E-mail (None*) Use Active Directory Device Credentials (Off*) Device Userid Device Password Kerberos 5 REALM NTLM Domain Disable "SMTP server not set up" error (Off*)	Configure the e-mail settings of the printer.
<b>Error Prevention</b> Jam Assist (On*) Auto Continue (On*) Auto Reboot Auto Reboot (Reboot always*) Max Auto Reboots (2*) Auto Reboot Window (720 seconds*) Display Short Paper Error (Auto-clear*) Page Protect (Off*)	<ul style="list-style-type: none"> <li>• Set the printer to flush blank pages or pages with partial prints automatically after a jammed page has been cleared.</li> <li>• Let the printer continue processing or printing a job automatically after clearing certain printer conditions that require user intervention.</li> <li>• Set the printer when to restart automatically when an error occurs.</li> <li>• Set the printer to show a message when a short paper error occurs.</li> <li>• Set the printer to process the entire page into the memory before printing it.</li> </ul>
<b>Jam Content Recovery</b> Jam Recovery (Auto*)	<ul style="list-style-type: none"> <li>• Set the printer to reprint jammed pages.</li> <li>• Specify how to restart a scan job after resolving a paper jam.</li> </ul>
<b>Note:</b> An asterisk (*) next to a value indicates the factory default setting.	

## Power Management

Menu item	Description
<b>Sleep Mode Profile</b> Print from Sleep Mode Stay awake after printing Enter Sleep Mode after printing*	Set the printer to stay in Ready mode or return to Sleep mode after printing.
<b>Timeouts</b> Sleep Mode 1–120 minutes (15*)	Set the idle time before the printer begins operating in Sleep mode.
<b>Timeouts</b> Hibernate Timeout Disabled 1 hour 2 hours 3 hours 6 hours 1 day 2 days 3 days* 1 week 2 weeks 1 month	Set the time before the printer turns off.
<b>Timeouts</b> Hibernate Timeout on Connection Hibernate Do Not Hibernate*	Set Hibernate Timeout to turn off the printer while an active Ethernet connection exists.
<b>Schedule Power Modes</b> Schedules Add New Schedule	Schedule the printer when to enter Sleep or Hibernate mode.
<b>Note:</b> An asterisk (*) next to a value indicates the factory default setting.	

## Accessibility

Menu item	Description
<b>Duplicate Key Strike Interval</b> 0–5 seconds (0*)	Set the interval during which the printer ignores duplicate key presses on an attached keyboard.
<b>Key Repeat Initial Delay</b> 0.25–5 seconds (1*)	Set the initial length of delay before a repeating key starts repeating. <b>Note:</b> Appears only when a keyboard is attached to the printer.
<b>Key Repeat Rate</b> 0.5–30 (30*)	Set the number of presses per second for a repeating key. <b>Note:</b> Appears only when a keyboard is attached to the printer.
<b>Note:</b> An asterisk (*) next to a value indicates the factory default setting.	

Menu item	Description
<b>Prolong Screen Timeout</b> Off* On	Let the user remain in the same location and reset the Screen Timeout timer when it expires instead of returning to the home screen.
<b>Note:</b> An asterisk (*) next to a value indicates the factory default setting.	

## Restore Factory Defaults

Menu item	Description
<b>Restore Settings</b> Restore all settings Restore printer settings Restore network settings Restore app settings	Restore the printer factory default settings.

## Maintenance

### Configuration Menu

Menu item	Description
<b>USB Configuration</b> USB PnP 1* 2	Change the USB driver mode of the printer to improve its compatibility with a personal computer.
<b>USB Configuration</b> USB Speed Full Auto*	Set the USB port to run at full speed and disable its high-speed capabilities.
<b>Tray Configuration</b> Size Sensing Tray [x] Sensing Off On*	Set the tray to sense automatically the paper size loaded into it.
<b>Tray Configuration</b> Tray Linking Automatic* Off	Set the printer to link the trays that have the same paper type and paper size settings.
<b>Tray Configuration</b> Show Tray Insert Message Off Only for unknown sizes* Always	Show the <b>Tray Insert</b> message.
<b>Note:</b> An asterisk (*) next to a value indicates the factory default setting.	

Menu item	Description
<b>Tray Configuration</b> A5 Loading Short Edge Long Edge*	Determine the default loading orientation for the A5 size paper in all paper sources.
<b>Tray Configuration</b> Paper Prompts Auto* Multipurpose Feeder Manual Paper	Set the paper source that the user fills when a prompt to load paper appears.
<b>Tray Configuration</b> Envelope Prompts Auto* Multipurpose Feeder Manual Envelope	Set the paper source that the user fills when a prompt to load envelope appears.
<b>Tray Configuration</b> Action for Prompts Prompt user* Continue Use current	Set the printer to resolve paper- or envelope-related change prompts.
<b>Reports</b> Menu Settings Page Event Log Event Log Summary HealthCheck Statistics	Print reports about printer menu settings, status, and event logs.
<b>Printer Emulations</b> PPDS Emulation Off* On	Set the printer to recognize and use the PPDS data stream.
<b>Printer Emulations</b> PS Emulation Off On*	Set the printer to recognize and use the PS data stream.
<b>Printer Emulations</b> Emulator Security Page Timeout 0–60 (60*)	Set the page timeout during emulation.
<b>Printer Emulations</b> Emulator Security Reset Emulator After Job Off* On	Reset the emulator after a print job.
<b>Note:</b> An asterisk (*) next to a value indicates the factory default setting.	

Menu item	Description
<b>Printer Emulations</b> Emulator Security Disable Printer Message Access Off On*	Disable access to printer message during emulation.
<b>Print Configuration</b> Black Only Mode Off* On	Print non-copy jobs in grayscale.
<b>Print Configuration</b> Color Trapping Off 1 2* 3 4 5	Enhance the printed output to compensate for misregistration in the printer.
<b>Print Configuration</b> Font Sharpening 0–150 (24*)	Set a text point-size value below which the high-frequency screens are used when printing font data. For example, if the value is 24, then all fonts sized 24 points or less use the high-frequency screens.
<b>Device Operations</b> Quiet Mode Off* On	Set the printer to operate in Quiet Mode. <b>Note:</b> Enabling this setting slows down the overall performance of the printer.
<b>Device Operations</b> Safe Mode Off* On	Set the printer to operate in a special mode, in which it attempts to continue offering as much functionality as possible, despite known issues. For example, when set to On, and the duplex motor is nonfunctional, the printer performs one-sided printing of the documents even if the job is two-sided printing.
<b>Device Operations</b> Clear Custom Status	Erase user-defined strings for the Default or Alternate custom messages.
<b>Device Operations</b> Clear all remotely-installed messages	Erase messages that were remotely installed.
<b>Device Operations</b> Automatically Display Error Screens Off On*	Show existing error messages on the display after the printer remains inactive on the home screen for a length of time equal to the Screen Timeout setting.
<b>Note:</b> An asterisk (*) next to a value indicates the factory default setting.	

Menu item	Description
<b>Device Operations</b> Automatic Media Type Detection Off On*	Set the printer to detect the paper type of a page being loaded.
<b>Toner patch sensor setup</b> Calibration frequency preference Disabled Fewest color adjustments Fewer color adjustments Normal* Better color accuracy Best color accuracy	Set the printer to put down the correct amount of toner to maintain color consistency.
<b>Toner patch sensor setup</b> Full calibration	Run the full color calibration.
<b>Toner patch sensor setup</b> Print TPS information page	Print a diagnostic page that contains information on toner patch sensor calibration.
<b>Note:</b> An asterisk (*) next to a value indicates the factory default setting.	

## Out of Service Erase

Menu item	Description
<b>Out of Service Erase</b> Memory Last Sanitized Hard Disk Last Sanitized	Show information on when the printer memory or hard disk was last sanitized.  <b>Note:</b> Hard Disk Last Sanitized appears only when a hard disk is installed.
<b>Out of Service Erase</b> Sanitize all information on nonvolatile memory Erase all printer and network settings Erase all apps and app settings Erase all shortcuts and shortcut settings Sanitize all information on hard disk Erase downloads (Erase all macros, fonts, PPOs, etc.) Erase buffered jobs Erase Held jobs	Clear all information on non-volatile memory and information on the hard disk.  <b>Note:</b> Sanitize all information on hard disk appears only when a hard disk is installed.

## Visible Home Screen Icons

Menu	Description
Status/Supplies Job Queue Change Language Address Book Bookmarks Held Jobs USB App Profiles Eco-Settings Forms and Favorites	Specify which icons to show on the home screen.

## About this Printer

Menu item	Description
<b>Asset Tag</b>	Show the serial number of the printer.
<b>Printer's Location</b>	Identify the printer location. The maximum length is 63 characters.
<b>Contact</b>	Personalize the printer name. The maximum length is 63 characters.
<b>Export Configuration File to USB</b>	Export the configuration file to a flash drive.
<b>Export Compressed Logs to USB</b>	Export the compressed log files to a flash drive.

# Print

## Layout

Menu item	Description
<b>Sides</b> 1-Sided* 2-Sided	Specify whether to print on one side or both sides of the paper.
<b>Flip Style</b> Long Edge* Short Edge	Determine which side of the paper is bound when performing two-sided printing.
<b>Blank Pages</b> Print Do Not Print*	Print blank pages that are included in a print job.
<b>Collate</b> Off (1,1,1,2,2,2) On (1,2,1,2,1,2)*	Keep the pages of a print job stacked in sequence, particularly when printing multiple copies of the job.
<b>Note:</b> An asterisk (*) next to a value indicates the factory default setting.	



Menu item	Description
<b>Separator Sheets</b> None* Between Copies Between Jobs Between Pages	Insert blank separator sheets when printing.
<b>Separator Sheet Source</b> Tray [x] (1*) Multipurpose Feeder	Specify the paper source for the separator sheet.
<b>Pages per Side</b> Off* 2 pages per side 3 pages per side 4 pages per side 6 pages per side 9 pages per side 12 pages per side 16 pages per side	Print multiple page images on one side of a sheet of paper.
<b>Pages per Side Ordering</b> Horizontal* Reverse Horizontal Vertical Reverse Vertical	Specify the positioning of multiple page images when using the Pages per Side menu.
<b>Pages per Side Orientation</b> Auto* Landscape Portrait	Specify the orientation of multiple page images when using the Pages per Side menu.
<b>Pages per Side Border</b> None* Solid	Print a border around each page image when using the Pages per Side menu.
<b>Copies</b> 1–9999 (1*)	Specify the number of copies for each print job.
<b>Print Area</b> Normal* Fit to page Whole Page	Set the printable area on a sheet of paper.
<b>Note:</b> An asterisk (*) next to a value indicates the factory default setting.	

## Setup

Menu item	Description
<b>Printer Language</b> PCL Emulation PS Emulation*	Set the printer language.  <b>Note:</b> Setting a printer language default does not prevent a software program from sending print jobs that use another printer language.
<b>Job Waiting</b> Off* On	Preserve print jobs requiring supplies so that jobs not requiring the missing supplies can print.  <b>Note:</b> This menu item appears only when a printer hard disk is installed.
<b>Job Hold Timeout</b> 0–255 (30*)	Set the time in seconds that the printer waits for user intervention before it holds jobs that require unavailable resources and continues to print other jobs in the print queue.  <b>Note:</b> This menu item appears only when a printer hard disk is installed.
<b>Printer Usage</b> Max Speed Max Yield*	Determine how the color imaging kit operates during printing.  <b>Notes:</b> <ul style="list-style-type: none"> <li>• When set to Max Yield, the color imaging kit slows or stops while printing groups of black-only pages.</li> <li>• When set to Max Speed, the color imaging kit always runs while printing, whether color or black pages are being printed.</li> </ul>
<b>Download Target</b> RAM* Disk	Specify where to save all permanent resources, such as fonts and macros, that have been downloaded to the printer.  <b>Note:</b> This menu item appears only when a printer hard disk is installed.
<b>Resource Save</b> Off* On	Determine what the printer does with downloaded resources, such as fonts and macros, when it receives a job that requires more than the available memory.  <b>Notes:</b> <ul style="list-style-type: none"> <li>• When set to Off, the printer retains downloaded resources only until memory is needed. Resources associated with the inactive printer language are deleted.</li> <li>• When set to On, the printer preserves all the permanent downloaded resources across all language switches. When necessary, the printer shows memory full messages instead of deleting permanent resources.</li> </ul>
<b>Print All Order</b> Alphabetical* Newest First Oldest First	Specify the order when you choose to print all held and confidential jobs.  <b>Note:</b> This menu item appears only when a printer hard disk is installed.
<b>Note:</b> An asterisk (*) next to a value indicates the factory default setting.	

## Quality

Menu item	Description
<b>Print Mode</b> Black and White Color*	Set how the printer generates color content.
<b>Print Resolution</b> 4800 CQ* 1200 dpi	Set the resolution for the printed output. <b>Note:</b> 4800 CQ provides high-quality output at maximum speed.
<b>Toner Darkness</b> 1 to 5 (4*)	Determine the lightness or darkness of text images.
<b>Halftone</b> Normal* Detail	Enhance the printed output to have smoother lines with sharper edges.
<b>Color Saver</b> Off* On	Reduce the amount of toner used to print graphics and images. <b>Note:</b> When set to On, this setting overrides the value of the Toner Darkness setting.
<b>RGB Brightness</b> -6 to 6 (0*)	Adjust the brightness, contrast, and saturation for color output. <b>Note:</b> This setting does not affect files where CMYK color specifications are used.
<b>RGB Contrast</b> 0 to 5 (0*)	
<b>RGB Saturation</b> 0 to 5 (0*)	
<b>Note:</b> An asterisk (*) next to a value indicates the factory default setting.	

## Advanced Imaging

Menu item	Description
<b>Color Balance</b> Cyan -5 to 5 (0*) Magenta -5 to 5 (0*) Yellow -5 to 5 (0*) Black -5 to 5 (0*) Reset Defaults	Adjust the amount of toner that is used for each color.
<b>Note:</b> An asterisk (*) next to a value indicates the factory default setting.	

Menu item	Description
<b>Color Correction</b> Off Auto* Manual	Modify the color settings used to print documents.  <b>Notes:</b> <ul style="list-style-type: none"> <li>Off sets the printer to receive the color correction from the software.</li> <li>Auto sets the printer to apply different color profiles to each object on the printed page.</li> <li>Manual allows the customization of the RGB or CMYK color conversions applied to each object on the printed page.</li> </ul>
<b>Color Samples</b> Print Color Samples	Print sample pages for each of the RGB and CMYK color conversion tables used in the printer.
<b>Color Adjust</b>	Calibrate the printer to adjust color variations in the printed output.
<b>Spot Color Replacement</b> Set Custom CMYK	Assign specific CMYK values to twenty named spot colors.
<b>Note:</b> An asterisk (*) next to a value indicates the factory default setting.	

## Job Accounting

Menu item	Description
<b>Job Accounting</b> Off* On	Set the printer to create a log of the print jobs that it receives.  <b>Note:</b> This menu item appears only when a flash memory or hard disk is installed.
<b>Accounting Log Frequency</b> Daily Weekly Monthly*	Specify how often the printer creates a log file.
<b>Log Action at End of Frequency</b> None* E-mail Current Log E-mail & Delete Current Log Post Current Log Post & Delete Current Log	Specify how the printer responds when the frequency threshold expires.  <b>Note:</b> The value defined in Accounting Log Frequency determines when this action is triggered.
<b>Note:</b> An asterisk (*) next to a value indicates the factory default setting.	

Menu item	Description
<b>Log Action at Near Full</b> None* E-mail Current Log E-mail & Delete Current Log E-mail & Delete Oldest Log Post Current Log Post & Delete Current Log Post & Delete Oldest Log Delete Current Log Delete Oldest Log Delete All But Current Delete All Logs	Specify how the printer responds when the hard disk is nearly full.
<b>Log Action at Full</b> None* E-mail & Delete Current Log E-mail & Delete Oldest Log Post & Delete Current Log Post & Delete Oldest Log Delete Current Log Delete Oldest Log Delete All But Current Delete All Logs	Specify how the printer responds when hard disk usage reaches the maximum limit (100MB).
<b>URL to Post Log</b>	Specify where the printer posts job accounting logs.
<b>E-mail Address to Send Logs</b>	Specify the e-mail address to which the printer sends job accounting logs.
<b>Log File Prefix</b>	Specify the prefix for the log files.  <b>Note:</b> The current host name defined in the TCP/IP menu is used as the default log file prefix.
<b>Note:</b> An asterisk (*) next to a value indicates the factory default setting.	

## XPS

Menu item	Description
<b>Print Error Pages</b> Off* On	Print the error pages that the printer encountered while processing an XPS file.
<b>Minimum Line Width</b> 1–30 (2*)	Set the minimum stroke width.  <b>Notes:</b> <ul style="list-style-type: none"> <li>Jobs printed in 1200 dpi use the value directly.</li> <li>Jobs printed in 4800 CQ use half the value.</li> </ul>
<b>Note:</b> An asterisk (*) next to a value indicates the factory default setting.	

## PDF

Menu item	Description
<b>Scale To Fit</b> Off* On	Scale the page content to fit the selected paper size.
<b>Annotations</b> Print Do Not Print*	Specify whether to print annotations in the PDF.
<b>Print PDF Error</b> Off On*	Enable the printing of PDF error.
<b>Note:</b> An asterisk (*) next to a value indicates the factory default setting.	

## PostScript

Menu item	Description
<b>Print PS Error</b> Off* On	Print a page that describes the PostScript® error. <b>Note:</b> When an error occurs, processing of the job stops, the printer prints an error message, and the rest of the print job is flushed.
<b>Minimum Line Width</b> 1–30 (2*)	Set the minimum stroke width. <b>Notes:</b> <ul style="list-style-type: none"> <li>Jobs printed in 1200 dpi use the value directly.</li> <li>Jobs printed in 4800 CQ use half the value.</li> </ul>
<b>Lock PS Startup Mode</b> Off On*	Disable the SysStart file.
<b>Image Smoothing</b> Off* On	Enhance the contrast and sharpness of low-resolution images. <b>Note:</b> This setting has no effect on images with a resolution of 300 dpi or higher.
<b>Wait Timeout</b> Off On*	Enable the printer to wait for more data before canceling a print job. <b>Note:</b> When enabled, the factory default setting is 40 seconds.
<b>Note:</b> An asterisk (*) next to a value indicates the factory default setting.	

## PCL

Menu item	Description
<b>Font Source</b> Resident* Disk Flash All	Choose the source which contains the default font selection.  <b>Notes:</b> <ul style="list-style-type: none"> <li>Flash and Disk appear only when a flash memory or hard disk is installed.</li> <li>For Flash and Disk to appear, make sure that they are not read- or write-protected.</li> </ul>
<b>Font Name</b> Courier*	Select a font from the specified font source.
<b>Symbol Set</b> 10U PC-8*	Specify the symbol set for each font name.  <b>Note:</b> A symbol set is a set of alphabetic and numeric characters, punctuation, and special symbols. Symbol sets support the different languages or specific programs such as math symbols for scientific text.
<b>Pitch</b> 0.08–100 (10*)	Specify the pitch for fixed or monospaced fonts.  <b>Note:</b> Pitch refers to the number of fixed-space characters in a horizontal inch of type.
<b>Orientation</b> Portrait* Landscape	Specify the orientation of text and graphics on the page.
<b>Lines per Page</b> 1–255	Specify the number of lines of text for each page printed through the PCL® data stream.  <b>Notes:</b> <ul style="list-style-type: none"> <li>This menu item activates vertical escapement that causes the selected number of requested lines to print between the default margins of the page.</li> <li>60 is the U.S. factory default setting. 64 is the international factory default setting.</li> </ul>
<b>PCL5 Minimum Line Width</b> 1–30 (2*)	Set the initial minimum stroke width.  <b>Notes:</b>
<b>PCLXL Minimum Line Width</b> 1–30 (2*)	<ul style="list-style-type: none"> <li>Jobs printed in 1200 dpi use the value directly.</li> <li>Jobs printed in 4800 CQ use half the value.</li> </ul>
<b>A4 Width</b> 198 mm* 203 mm	Set the width of the logical page on A4-size paper.  <b>Note:</b> Logical page is the space on the physical page where data is printed.
<b>Auto CR after LF</b> Off* On	Set the printer to perform a carriage return after a line feed control command.  <b>Note:</b> Carriage return is a mechanism that commands the printer to move the position of the cursor to the first position on the same line.
<b>Note:</b> An asterisk (*) next to a value indicates the factory default setting.	

Menu item	Description
<b>Auto LF after CR</b> Off* On	Set the printer to perform a line feed after a carriage return control command.
<b>Tray Renumber</b> Assign MP Feeder Assign Tray [x] Assign Manual Paper Assign Manual Envelope View Factory Defaults Restore Defaults	<ul style="list-style-type: none"> <li>Configure the printer to work with a different print driver or custom application that uses a different set of source assignments to request a given paper source.</li> <li>Show the factory default value assigned for each paper source.</li> <li>Restore the tray renumber values to their factory defaults.</li> </ul>
<b>Print Timeout</b> Off On* (90 seconds)	Set the printer to end a print job after it has been idle for the specified amount of time.
<b>Note:</b> An asterisk (*) next to a value indicates the factory default setting.	

## HTML

Menu item	Description
<b>Font Name</b> Times*	Set the font to use when printing HTML documents.
<b>Font Size</b> 1–255 (12*)	Set the font size to use when printing HTML documents.
<b>Scale</b> 1–400% (100*)	Scale HTML documents for printing.
<b>Orientation</b> Portrait* Landscape	Set the page orientation for HTML documents.
<b>Margin Size</b> 8–255 mm (19*)	Set the page margin for HTML documents.
<b>Backgrounds</b> Do Not Print Print*	Print background information or graphics in HTML documents.
<b>Note:</b> An asterisk (*) next to a value indicates the factory default setting.	

## Image

Menu item	Description
<b>Auto Fit</b> On Off*	Select the best available paper size and orientation setting for an image.  <b>Note:</b> When set to On, this menu item overrides the scaling and orientation settings for the image.
<b>Note:</b> An asterisk (*) next to a value indicates the factory default setting.	



Menu item	Description
<b>Invert</b> Off* On	Invert bitonal monochrome images. <b>Note:</b> This menu item does not apply to GIF or JPEG image formats.
<b>Scaling</b> Anchor Top Left Best Fit* Anchor Center Fit Height/Width Fit Height Fit Width	Adjust the image to fit the printable area. <b>Note:</b> When Auto Fit is set to On, Scaling is automatically set to Best Fit.
<b>Orientation</b> Portrait* Landscape Reverse Portrait Reverse Landscape	Specify the orientation of text and graphics on the page.
<b>Note:</b> An asterisk (*) next to a value indicates the factory default setting.	

## Paper

### Tray Configuration

Menu item	Description
<b>Default Source</b> Tray [x] (1*) Multipurpose Feeder Manual Paper Manual Envelope	Set the paper source for all print jobs.
<b>Paper Size/Type</b> Tray [x] Multipurpose Feeder Manual Paper Manual Envelope	Specify the paper size or paper type loaded in each paper source.
<b>Substitute Size</b> Off Letter/A4 All Listed*	Set the printer to substitute a specified paper size if the requested size is not loaded in any paper source. <b>Notes:</b> <ul style="list-style-type: none"> <li>Off prompts the user to load the required paper size.</li> <li>All Listed allows all available substitutions.</li> </ul>
<b>Note:</b> An asterisk (*) next to a value indicates the factory default setting.	

Menu item	Description
<b>Configure MP</b> Cassette* Manual First	Determine the behavior of the multipurpose feeder.  <b>Notes:</b> <ul style="list-style-type: none"> <li>• Cassette configures the multipurpose feeder as the automatic paper source.</li> <li>• Manual sets the multipurpose feeder only for manual-feed print jobs.</li> <li>• First configures the multipurpose feeder as the primary paper source.</li> </ul>
<b>Note:</b> An asterisk (*) next to a value indicates the factory default setting.	

## Media Configuration

### Universal Setup

Menu item	Description
<b>Units of Measure</b> Inches Millimeters	Specify the unit of measurement for the universal paper.  <b>Note:</b> Inches is the U.S. factory default setting. Millimeters is the international factory default setting.
<b>Portrait Width</b> 3–52 inches (8.5*) 76–1321 mm (216*)	Set the portrait width of the universal paper.
<b>Portrait Height</b> 3–52 inches (14*) 76.2–1321 mm (356*)	Set the portrait height of the universal paper.
<b>Feed Direction</b> Short Edge* Long Edge	Set the printer to pick paper from the short edge or long edge direction.  <b>Note:</b> Long Edge appears only when the longest edge is shorter than the maximum width supported.
<b>Note:</b> An asterisk (*) next to a value indicates the factory default setting.	

## Media Types

Menu item	Description
Plain Card Stock Recycled Transparency Glossy Heavy Glossy Labels Vinyl Labels Bond Envelope Rough Envelope Letterhead Preprinted Colored Paper Light Heavy Rough/Cotton Custom Type [X]	Specify the texture, weight, and orientation of the paper.

## USB Drive

### Flash Drive Print

Menu item	Description
<b>Number of Copies</b> 1–9999 (1*)	Set the number of copies.
<b>Paper Source</b> Tray [x] (1*) Multipurpose Feeder Manual Paper Manual Envelope	Set the paper source for the print job.  <b>Note:</b> Multipurpose Feeder appears only when an optional 650-sheet duo tray is installed.
<b>Color</b> Off On*	Print the output in color.
<b>Collate</b> (1,1,1) (2,2,2) (1,2,3) (1,2,3)*	Print multiple copies in sequence.
<b>Note:</b> An asterisk (*) next to a value indicates the factory default setting.	

Menu item	Description
<b>Sides</b> 1-Sided* 2-Sided	Specify whether to print on one side or two sides of the paper.
<b>Flip Style</b> Long Edge* Short Edge	Determine which side of the paper (long edge or short edge) is bound when performing two-sided printing.  <b>Note:</b> Depending on the option selected, the printer automatically offsets each printed information of the page to bind the job correctly.
<b>Pages per Side</b> Off* 2 pages per side 3 pages per side 4 pages per side 6 pages per side 9 pages per side 12 pages per side 16 pages per side	Print multiple page images on one side of a sheet of paper.
<b>Pages per Side Ordering</b> Horizontal* Reverse Horizontal Reverse Vertical Vertical	Specify the positioning of multiple page images when using Pages per Side.  <b>Note:</b> The positioning depends on the number of page images and their page orientation.
<b>Pages per Side Orientation</b> Auto* Landscape Portrait	Specify the orientation of a multiple-page document when using Pages per Side.
<b>Pages per Side Border</b> None* Solid	Print a border around each page image when using Pages per Side.
<b>Separator Sheets</b> Off* Between Copies Between Jobs Between Pages	Specify whether to insert blank separator sheets when printing.
<b>Separator Sheet Source</b> Tray [x] (1*) Multipurpose Feeder	Specify the paper source for the separator sheet.  <b>Note:</b> Multipurpose Feeder appears only when an optional 650-sheet duo tray is installed.
<b>Blank Pages</b> Do Not Print* Print	Specify whether to print blank pages in a print job.
<b>Note:</b> An asterisk (*) next to a value indicates the factory default setting.	

## Network/Ports

### Network Overview

Menu item	Description
<b>Active Adapter</b> Auto* Standard Network Wireless	Specify the type of the network connection. <b>Note:</b> Wireless is available only in printers connected to a wireless network.
<b>Network Status</b>	Show the connectivity status of the printer network.
<b>Display Network Status on Printer</b> Off On*	Show the network status on the display.
<b>Speed, Duplex</b>	Show the speed of the currently active network card.
<b>IPv4</b>	Show the IPv4 address.
<b>All IPv6 Addresses</b>	Show all IPv6 addresses.
<b>Reset Print Server</b>	Reset all active network connections to the printer. <b>Note:</b> This setting removes all network configuration settings.
<b>Network Job Timeout</b> Off On* (90 seconds)	Set the time before the printer cancels a network print job.
<b>Banner Page</b> Off* On	Print a banner page.
<b>Enable Network Connections</b> Off On*	Enable the printer to connect to a network.
<b>Enable LLDP</b> Off* On	Enable Link Layer Discovery Protocol (LLDP) in the printer.
<b>Note:</b> An asterisk (*) next to a value indicates the factory default setting.	

### Wireless

**Note:** This menu is available only in printers connected to a Wi-Fi network or printers that have a wireless network adapter.

Menu item	Description
<b>Setup On Printer Panel</b> Choose Network Add Wi-Fi Network Network Name Network Mode Infrastructure Wireless Security Mode Disabled* WEP WPA2/WPA - Personal WPA2 - Personal 802.1x - RADIUS	Configure the Wi-Fi connection using the control panel.  <b>Note:</b> 802.1x - RADIUS can be configured only from the Embedded Web Server.
<b>Wi-Fi Protected Setup</b> WPS Auto Detect Off On* Start Push Button Method Start PIN Method	Establish a Wi-Fi network and enable network security.  <b>Notes:</b> <ul style="list-style-type: none"> <li>WPS Auto Detect appears only when the Wireless Security Mode is set to WEP.</li> <li>Start Push-Button Method connects the printer to a Wi-Fi network when buttons on both the printer and the access point (wireless router) are pressed within a given time.</li> <li>Start PIN Method connects the printer to a Wi-Fi network when a PIN on the printer is entered into the wireless settings of the access point.</li> </ul>
<b>Network Mode</b> BSS Type Infrastructure*	Specify the network mode.
<b>Enable Wi-Fi Direct</b> On Off*	Enable Wi-Fi Direct-capable devices to connect directly to the printer.
<b>Compatibility</b> 802.11b/g/n (2.4GHz)* 802.11a/b/g/n/ac (2.4GHz/5GHz) 802.11a/n/ac (5GHz)	Specify the standard for the Wi-Fi network.  <b>Note:</b> 802.11a/b/g/n/ac (2.4GHz/5GHz) and 802.11a/n/ac (5GHz) only appear when a Wi-Fi option is installed.
<b>Wireless Security Mode</b> Disabled* WEP WPA2/WPA-Personal WPA2-Personal 802.1x - RADIUS	Set the security mode for connecting the printer to Wi-Fi devices.  <b>Note:</b> 802.1x - RADIUS can be configured only from the Embedded Web Server.
<b>WEP Authentication Mode</b> Auto* Open Shared	Set the type of Wireless Encryption Protocol (WEP) for the printer.  <b>Note:</b> This menu item appears only when the Wireless Security Mode is set to WEP.

Menu item	Description
<b>Set WEP Key</b>	Specify a WEP password for secure Wi-Fi connection.
<b>WPA2/WPA Personal</b> AES	Enable Wi-Fi security through Wi-Fi Protected Access (WPA). <b>Note:</b> This menu item appears only when the Wireless Security Mode is set to WPA2/WPA-Personal.
<b>Set Pre-Shared Key</b>	Set the password for secure Wi-Fi connection.
<b>WPA2-Personal</b> AES	Enable Wi-Fi security through WPA2. <b>Note:</b> This menu item appears only when the Wireless Security Mode is set to WPA2-Personal.
<b>802.1x Encryption Mode</b> WPA+ WPA2*	Enable Wi-Fi security through 802.1x standard. <b>Notes:</b> <ul style="list-style-type: none"> <li>This menu item appears only when the Wireless Security Mode is set to 802.1x - RADIUS.</li> <li>802.1x - RADIUS can be configured only from the Embedded Web Server.</li> </ul>
<b>IPv4</b> Enable DHCP On* Off Set Static IP Address IP Address Netmask Gateway	Enable and configure IPv4 settings in the printer.
<b>IPv6</b> Enable IPv6 On* Off Enable DHCPv6 On Off* Stateless Address Autoconfiguration On* Off DNS Server Address Manually Assigned IPv6 Address Manually Assigned IPv6 Router Address Prefix All IPv6 Addresses All IPv6 Router Addresses	Enable and configure IPv6 settings in the printer.
<b>Network Address</b> UAA LAA	View the network addresses.

Menu item	Description
<b>PCL SmartSwitch</b> Off On*	Set the printer to switch automatically to PCL emulation when a print job requires it, regardless of the default printer language.  <b>Note:</b> If PCL SmartSwitch is off, then the printer does not examine incoming data and uses the default printer language specified in the Setup menu.
<b>PS SmartSwitch</b> Off On*	Set the printer to switch automatically to PS emulation when a print job requires it, regardless of the default printer language.  <b>Note:</b> If PS SmartSwitch is off, then the printer does not examine incoming data and uses the default printer language specified in the Setup menu.
<b>Job Buffering</b> On Off*	Temporarily store print jobs in the printer hard disk before printing.  <b>Note:</b> This menu item appears only when a hard disk is installed.
<b>Mac Binary PS</b> Auto* On Off	Set the printer to process Macintosh binary PostScript print jobs.  <b>Notes:</b> <ul style="list-style-type: none"> <li>On processes raw binary PostScript print jobs.</li> <li>Off filters print jobs using the standard protocol.</li> </ul>

## Ethernet

Menu item	Description
<b>Network Speed</b>	Show the speed of the active network adapter.
<b>IPv4</b> Enable DHCP (On*) Set Static IP Address	Configure the IPv4 settings.
<b>IPv6</b> Enable IPv6 (On*) Enable DHCPv6 (Off*) Stateless Address Autoconfiguration (On*) DNS Server Address Manually Assigned IPv6 Address Manually Assigned IPv6 Router Address Prefix (64*) All IPv6 Addresses All IPv6 Router Addresses	Configure the IPv6 settings.
<b>Network Address</b> UAA LAA	Specify the network address.
<b>Note:</b> An asterisk (*) next to a value indicates the factory default setting.	



Menu item	Description
<b>PCL SmartSwitch</b> Off On*	Set the printer to switch automatically to PCL emulation when a print job requires it, regardless of the default printer language. <b>Note:</b> When this setting is disabled, the printer does not examine incoming data and uses the default printer language specified in the Setup menu.
<b>PS SmartSwitch</b> Off On*	Set the printer to switch automatically to PostScript emulation when a print job requires it, regardless of the default printer language. <b>Note:</b> When this setting is disabled, the printer does not examine incoming data and uses the default printer language specified in the Setup menu.
<b>Job Buffering</b> Off* On	Temporarily store jobs on the hard disk before printing. <b>Note:</b> This menu item appears only when a hard disk is installed.
<b>Mac Binary PS</b> Auto* On Off	Set the printer to process Macintosh binary PostScript print jobs. <b>Notes:</b> <ul style="list-style-type: none"> <li>• Auto processes print jobs from computers using either Windows or Macintosh operating systems.</li> <li>• Off filters PostScript print jobs using the standard protocol.</li> </ul>
<b>Energy Efficient Ethernet</b> On Off Auto*	Reduce power consumption when the printer does not receive data from the Ethernet network.
<b>Note:</b> An asterisk (*) next to a value indicates the factory default setting.	

## TCP/IP

**Note:** This menu appears only in network printers or printers attached to print servers.

Menu item	Description
<b>Set Hostname</b>	Set the current TCP/IP host name.
<b>Domain Name</b>	Set the domain name.
<b>Allow DHCP/BOOTP to update NTP server</b> On* Off	Allow the DHCP and BOOTP clients to update the NTP settings of the printer.
<b>Zero Configuration Name</b>	Specify a service name for the zero configuration network.
<b>Enable Auto IP</b> Off* On	Assign an IP address automatically.
<b>DNS Server Address</b>	Specify the current Domain Name System (DNS) server address.
<b>Note:</b> An asterisk (*) next to a value indicates the factory default setting.	

Menu item	Description
<b>Backup DNS Address</b>	Specify the backup DNS server addresses.
<b>Backup DNS Address 2</b>	
<b>Backup DNS Address 3</b>	
<b>Domain Search Order</b>	Specify a list of domain names to locate the printer and its resources that reside in different domains on the network.
<b>Enable DDNS</b> Off* On	Update the Dynamic DNS settings.
<b>DDNS TTL</b>	Specify the current DDNS settings.
<b>Default TTL</b>	
<b>DDNS Refresh Time</b>	
<b>Enable mDNS</b> Off On*	Update the multicast DNS settings.
<b>WINS Server Address</b>	Specify a server address for Windows Internet Name Service (WINS).
<b>Enable BOOTP</b> Off* On	Allow the BOOTP to assign a printer IP address.
<b>Restricted Server List</b>	Specify the IP addresses that are allowed to communicate with the printer over TCP/IP.  <b>Notes:</b> <ul style="list-style-type: none"> <li>• Use a comma to separate each IP address.</li> <li>• You can add up to 50 IP addresses.</li> </ul>
<b>Restricted Server List Options</b> Block All Ports* Block Printing Only Block Printing and HTTP Only	Specify the access option for IP addresses that are not in the list.
<b>MTU</b> 256–1500 Ethernet (1500*)	Specify a maximum transmission unit (MTU) parameter for the TCP connections.
<b>Raw Print Port</b> 1–65535 (9100*)	Specify a raw port number for printers connected on a network.
<b>Outbound Traffic Maximum Speed</b> Off* On	Set the maximum transfer rate of the printer.  <b>Note:</b> When enabled, the option for this setting is 100–1000000 Kilobits/second.
<b>Enable TLSv1.0</b> Off On*	Enable the TLSv1.0 protocol.
<b>Note:</b> An asterisk (*) next to a value indicates the factory default setting.	

Menu item	Description
<b>Enable TLSv1.1</b> Off On*	Enable the TLSv1.1 protocol.
<b>SSL Cipher List</b>	Specify the cipher algorithms to use for the SSL or the TLS connections.
<b>Note:</b> An asterisk (*) next to a value indicates the factory default setting.	

## SNMP

**Note:** This menu appears only in network printers or printers that are attached to print servers.

Menu item	Description
<b>SNMP Versions 1 and 2c</b> Enabled Off On* Allow SNMP Set Off On* Enable PPM MIB Off On* SNMP Community	Configure Simple Network Management Protocol (SNMP) versions 1 and 2c to install print drivers and applications.
<b>SNMP Version 3</b> Enabled Off On* Set Read/Write Credentials User Name Password Set Read-only Credentials User Name Password Authentication Hash MD5 SHA1* Minimum Authentication Level No Authentication, No Privacy Authentication, No Privacy Authentication, Privacy* Privacy Algorithm DES AES-128*	Configure SNMP version 3 to install and update the printer security.
<b>Note:</b> An asterisk (*) next to a value indicates the factory default setting.	

## IPSec

**Note:** This menu appears only in network printers or printers that are attached to print servers.

Menu item	Description
<b>Enable IPSec</b> Off On*	Enable Internet Protocol Security (IPSec).
<b>Base Configuration</b> Default* Compatibility Secure	Set the IPSec base configuration.
<b>DH (Diffie-Hellman) Group Proposal</b> modp2048 (14)* modp3072 (15) modp4096 (16) modp6144 (17)	Set the IPSec base configuration. <b>Note:</b> This menu item appears only when Base Configuration is set to Compatibility.
<b>Proposed Encryption Method</b> 3DES AES*	Set the encryption method. <b>Note:</b> This menu item appears only when Base Configuration is set to Compatibility.
<b>Proposed Authentication Method</b> SHA1 SHA256* SHA512	Set the authentication method. <b>Note:</b> This menu item appears only when Base Configuration is set to Compatibility.
<b>IKE SA Lifetime (Hours)</b> 1 2 4 8 24*	Specify the IKE SA expiry period. <b>Note:</b> This menu item appears only when Base Configuration is set to Secure.
<b>IPSec SA Lifetime (Hours)</b> 1 2 4 8* 24	Specify the IPSec SA expiry period. <b>Note:</b> This menu item appears only when Base Configuration is set to Secure.
<b>IPSec Device Certificate</b>	Specify an IPSec certificate.
<b>Pre-Shared Key Authenticated Connections</b> Host [x]	Configure the authenticated connections of the printer.
<b>Certificate Authenticated Connections</b> Host [x] Address[/subnet]	
<b>Note:</b> An asterisk (*) next to a value indicates the factory default setting.	

## 802.1x

**Note:** This menu appears only in network printers or printers that are attached to print servers.

Menu item	Description
<b>Active</b> Off* On	Let the printer join networks that require authentication before allowing access.
<b>Note:</b> An asterisk (*) next to a value indicates the factory default setting.	

## LPD Configuration

**Note:** This menu appears only in network printers or printers that are attached to print servers.

Menu item	Description
<b>LPD Timeout</b> 0–65535 seconds (90*)	Set the time-out value to stop the Line Printer Daemon (LPD) server from waiting indefinitely for hung or invalid print jobs.
<b>LPD Banner Page</b> Off* On	Print a banner page for all LPD print jobs. <b>Note:</b> A banner page is the first page of a print job used as a separator of print jobs and to identify the originator of the print job request.
<b>LPD Trailer Page</b> Off* On	Print a trailer page for all LPD print jobs. <b>Note:</b> A trailer page is the last page of a print job.
<b>LPD Carriage Return Conversion</b> Off* On	Enable carriage return conversion. <b>Note:</b> Carriage return is a mechanism that commands the printer to move the position of the cursor to the first position on the same line.
<b>Note:</b> An asterisk (*) next to a value indicates the factory default setting.	

## HTTP/FTP Settings

Menu item	Description
<b>Enable HTTP Server</b> Off On*	Access the Embedded Web Server to monitor and manage the printer.
<b>Enable HTTPS</b> Off On*	Enable Hypertext Transfer Protocol Secure (HTTPS) to encrypt data transferring to and from the print server.
<b>Force HTTPS Connections</b> On Off*	Force the printer to use HTTPS connections.
<b>Note:</b> An asterisk (*) next to a value indicates the factory default setting.	

Menu item	Description
<b>Enable FTP/TFTP</b> Off On*	Send files using FTP/TFTP.
<b>Local Domains</b>	Specify domain names for HTTP and FTP servers.
<b>HTTP Proxy IP Address</b>	Configure the HTTP and FTP server settings.
<b>FTP Proxy IP Address</b>	
<b>HTTP Default IP Port</b>	
<b>HTTPS Device Certificate</b>	
<b>FTP Default IP Port</b>	
<b>Timeout for HTTP/FTP Requests</b> 1–299 (30*)	Specify the amount of time before the server connection stops.
<b>Retries for HTTP/FTP Requests</b> 1–299 (3*)	Set the number of retries to connect to the HTTP/FTP server.
<b>Note:</b> An asterisk (*) next to a value indicates the factory default setting.	

## USB

Menu item	Description
<b>PCL SmartSwitch</b> Off On*	Set the printer to switch to PCL emulation when a print job received through a USB port requires it, regardless of the default printer language.  <b>Note:</b> When this setting is disabled, the printer does not examine incoming data and uses the default printer language specified in the Setup menu.
<b>PS SmartSwitch</b> Off On*	Set the printer to switch to PostScript emulation when a print job received through a USB port requires it, regardless of the default printer language.  <b>Note:</b> When this setting is disabled, the printer does not examine incoming data and uses the default printer language specified in the Setup menu.
<b>Job Buffering</b> Off* On	Temporarily store jobs on the hard disk before printing.  <b>Note:</b> This menu item appears only when a hard disk is installed.
<b>Mac Binary PS</b> Auto* On Off	Set the printer to process Macintosh binary PostScript print jobs.  <b>Notes:</b> <ul style="list-style-type: none"> <li>• Auto processes print jobs from computers using either Windows or Macintosh operating systems.</li> <li>• Off filters PostScript print jobs using the standard protocol.</li> </ul>
<b>Enable USB Port</b> Off On*	Enable the front USB drive port.
<b>Note:</b> An asterisk (*) next to a value indicates the factory default setting.	

## Restrict external network access

Menu item	Description
<b>Restrict external network access</b> Off* On	Restrict access to network sites.
<b>External network address</b>	Specify the network addresses with restricted access.
<b>E-mail address for notification</b>	Specify an e-mail address to send a notification of logged events.
<b>Ping frequency</b> 1–300 (10*)	Specify the network query interval in seconds.
<b>Subject</b>	Specify the subject and message of the notification e-mail.
<b>Message</b>	
<b>Note:</b> An asterisk (*) next to a value indicates the factory default setting.	

## Google Cloud Print

Menu item	Description
<b>Registration</b> Register	Register the printer to the Google Cloud Print server.
<b>Options</b> Enable Google Cloud Print Off On*	Print directly from your Google account.
<b>Options</b> Enable Local Discovery Off On*	Allow the registered user and other users on the same subnet to send jobs to the printer locally.
<b>Options</b> Enable SSL Peer Verification Off On*	Verify authenticity of the peer certificate to connect to your Google account.
<b>Options</b> Always Print As Image Off* On	Set the printer to process PDF files as an image for faster printing.
<b>Note:</b> An asterisk (*) next to a value indicates the factory default setting.	

## Wi-Fi Direct

**Note:** This menu appears only when a direct Wi-Fi network is the active network.

Menu item	Description
<b>SSID</b>	Specify the service set identifier (SSID) of the Wi-Fi network.
<b>Preferred Channel Number</b> Auto 1–11 (6*)	Show the PSK on the Network Setup Page.
<b>Set PSK</b>	Set the preshared key (PSK) to authenticate and validate users on a Wi-Fi connection.
<b>Show PSK on Setup Page</b> Off On*	Show the PSK on the Network Setup Page.
<b>Group Owner IP Address</b>	Specify the IP address of the group owner.
<b>Auto-Accept Push Button Requests</b> Off* On	Accept requests to connect to the network automatically. <b>Note:</b> Accepting clients automatically is not secure.
<b>Note:</b> An asterisk (*) next to a value indicates the factory default setting.	

## Security

### Login Methods

#### Manage Permissions

Menu item	Description
<b>Function Access</b> Manage Shortcuts Modify Address Book Create Profiles Manage Bookmarks Flash Drive Print Flash Drive Color Printing Held Jobs Access Use Profiles Cancel Jobs at the Device Change Language Internet Printing Protocol (IPP) B/W Print Color Print	Control access to the printer functions.



Menu item	Description
<b>Administrative Menus</b> Security Menu Network/Ports Menu Paper Menu Reports Menu Function Configuration Menus Supplies Menu Option Card Menu SE Menu Device Menu	Control access to the printer menu settings.
<b>Device Management</b> Remote Management Firmware Updates Apps Configuration Import / Export All Settings Out of Service Erase	Control access to the printer management options.
<b>Apps</b> New Apps Slideshow Change Wallpaper Screen Saver Forms and Favorites Eco-Settings	Control access to printer applications.

## Local Accounts

Menu item	Description
<b>Manage Groups/Permissions</b>	Show a list of all saved groups in the printer.
<b>Add User</b> User Name/Password User Name Password PIN	Create local accounts and specify their access to the printer functions, administrative menus, printer management options, and applications.

## Schedule USB Devices

Menu item	Description
<b>Schedules</b> Add New Schedule	Schedule access to the front USB port.

## Security Audit Log

Menu item	Description
<b>Enable Audit</b> Off* On	Record the events in the secure audit log and remote syslog.
<b>Enable Remote Syslog</b> Off* On	Send audit logs to a remote server.
<b>Remote Syslog Server</b>	Specify the remote syslog server.
<b>Remote Syslog Port</b> 1–65535 (514*)	Specify the remote syslog port.
<b>Remote Syslog Method</b> Normal UDP* Stunnel	Specify a syslog method to transmit logged events to a remote server.
<b>Remote Syslog Facility</b> 0 - Kernel Messages 1 - User-Level Messages 2 - Mail System 3 - System Daemons 4 - Security/Authorization Messages* 5 - Messages Generated Internally by Syslogs 6 - Line Printer Subsystem 7 - Network News Subsystem 8 - UUCP Subsystem 9 - Clock Daemon 10 - Security/Authorization Messages 11 - FTP Daemon 12 - NTP Subsystem 13 - Log Audit 14 - Log Alert 15 - Clock Daemon 16 - Local Use 0 (local0) 17 - Local Use 1 (local1) 18 - Local Use 2 (local2) 19 - Local Use 3 (local3) 20 - Local Use 4 (local4) 21 - Local Use 5 (local5) 22 - Local Use 6 (local6) 23 - Local Use 7 (local7)	Specify a facility code that the printer uses when sending log events to a remote server.
<b>Note:</b> An asterisk (*) next to a value indicates the factory default setting.	

Menu item	Description
<b>Severity of Events to Log</b> 0 - Emergency 1 - Alert 2 - Critical 3 - Error 4 - Warning* 5 - Notice 6 - Informational 7 - Debug	Specify the priority level cutoff for logging messages and events.
<b>Remote Syslog Non-Logged Events</b> Off* On	Send all events, regardless of severity level, to the remote server.
<b>Admin's E-mail Address</b>	Send e-mail notification of logged events to the administrator.
<b>E-mail Log Cleared Alert</b> Off* On	Send e-mail notification to the administrator when a log entry is deleted.
<b>E-mail Log Wrapped Alert</b> Off* On	Send e-mail notification to the administrator when the log becomes full and begins to overwrite the oldest entries.
<b>Log Full Behavior</b> Wrap Over Older Entries* E-mail Log Then Delete All Entries	Resolve log storage issues when the log fills its allotted memory.
<b>E-mail % Full Alert</b> Off* On	Send e-mail notification to the administrator when the log fills its allotted memory.
<b>% Full Alert Level</b> 1–99 (90*)	
<b>E-mail Log Exported Alert</b> Off* On	Send e-mail notification to the administrator when a log is exported.
<b>E-mail Log Settings Changed Alert</b> Off* On	Send e-mail notification to the administrator when Enable Audit is set.
<b>Log Line Endings</b> LF (\n)* CR (\r) CRLF (\r\n)	Specify how the log file terminates the end of each line.
<b>Note:</b> An asterisk (*) next to a value indicates the factory default setting.	

Menu item	Description
<b>Digitally Sign Exports</b> Off* On	Add a digital signature to each exported log file.
<b>Clear Log</b>	Delete all audit logs.
<b>Export Log</b> Syslog (RFC 5424) Syslog (RFC 3164) CSV	Export a security log to a flash drive.
<b>Note:</b> An asterisk (*) next to a value indicates the factory default setting.	

## Login Restrictions

Menu item	Description
<b>Login failures</b> 1–10 (3*)	Specify the number of failed login attempts before the user gets locked out.
<b>Failure time frame</b> 1–60 minutes (5*)	Specify the time frame between failed login attempts before the user gets locked out.
<b>Lockout time</b> 1–60 minutes (5*)	Specify the lockout duration.
<b>Web Login Timeout</b> 1–120 minutes (10*)	Specify the delay for a remote login before the user is logged off automatically.
<b>Note:</b> An asterisk (*) next to a value indicates the factory default setting.	

## Confidential Print Setup

Menu item	Description
<b>Max Invalid PIN</b> 2–10	Set the number of times an invalid PIN can be entered. <b>Notes:</b> <ul style="list-style-type: none"> <li>A value of zero turns off this setting.</li> <li>When the limit is reached, the print jobs for that user name and PIN are deleted.</li> </ul>
<b>Confidential Job Expiration</b> Off* 1 Hour 4 Hours 24 Hours 1 Week	Set the expiration time for confidential print jobs. <b>Notes:</b> <ul style="list-style-type: none"> <li>If this menu item is changed while confidential print jobs reside in the printer memory or hard disk, then the expiration time for those print jobs does not change to the new default value.</li> <li>If the printer is turned off, then all confidential jobs held in the printer memory are deleted.</li> </ul>
<b>Note:</b> An asterisk (*) next to a value indicates the factory default setting.	

Menu item	Description
<b>Repeat Job Expiration</b> Off* 1 Hour 4 Hours 24 Hours 1 Week	Set the expiration time for a print job that you want to repeat.
<b>Verify Job Expiration</b> Off* 1 Hour 4 Hours 24 Hours 1 Week	Set the expiration time that the printer prints a copy for the user to examine its quality, before printing the remaining copies.
<b>Reserve Job Expiration</b> Off* 1 Hour 4 Hours 24 Hours 1 Week	Set the expiration time that the printer stores print jobs for printing later.
<b>Require All Jobs to be Held</b> Off* On	Set the printer to hold all print jobs.
<b>Keep duplicate documents</b> Off* On	Set the printer to print other documents with the same file name without overwriting any of the print jobs.
<b>Note:</b> An asterisk (*) next to a value indicates the factory default setting.	

## Disk Encryption

**Note:** This menu appears only when a hard disk is installed.

Menu item	Description
<b>Status</b> Enabled Disabled	Enable disk encryption.
<b>Start encryption</b>	

## Erase Temporary Data Files

Menu item	Description
<b>Stored in onboard memory</b> Off* On	Delete all files stored on the printer memory.
<b>Stored on hard disk</b> 1 Pass Erase* 3 Pass Erase 7 Pass Erase	Delete all files stored on the printer hard disk. <b>Note:</b> This menu item appears only when a printer hard disk is installed.
<b>Note:</b> An asterisk (*) next to a value indicates the factory default setting.	

## Solutions LDAP Settings

Menu item	Description
<b>Follow LDAP Referrals</b> Off* On	Search the different servers in the domain for the logged-in user account.
<b>LDAP Certificate Verification</b> Yes No*	Enable verification of LDAP certificates.

## Miscellaneous

Menu item	Description
<b>Protected Features</b> Show* Hide	Show all the features that Function Access Control (FAC) protects regardless of the security permission that the user has. <b>Note:</b> Hide displays only FAC-protected features that the user has access.
<b>Print Permission</b> Off* On	Let the user log in before printing.
<b>Default Print Permission Login</b> User Name/Password* User Name	Set the default login for Print Permission.
<b>Security Reset Jumper</b> Enable "Guest" access* No Effect	Specify user access to the printer. <b>Notes:</b> <ul style="list-style-type: none"> <li>The jumper is located beside a lock icon on the controller board.</li> <li>Enable "Guest" access provides anyone access to all aspects of the printer.</li> <li>No Effect may make access to the printer impossible when the required security information is unavailable.</li> </ul>
<b>Note:</b> An asterisk (*) next to a value indicates the factory default setting.	

Menu item	Description
<b>Minimum Password Length</b> 0–32	Specify the password length.
<b>Note:</b> An asterisk (*) next to a value indicates the factory default setting.	

## Reports

### Menu Settings Page

Menu item	Description
<b>Menu Settings Page</b>	Print a report that contains the printer menus.

### Device

Menu item	Description
<b>Device Information</b>	Print a report that contains information about the printer.
<b>Device Statistics</b>	Print a report about printer usage and supply status.
<b>Profile List</b>	Print a list of profiles that are stored in the printer.
<b>Asset Report</b>	Print a report that contains the printer serial number and model name.

### Print

Menu item	Description
<b>Print Fonts</b> PCL Fonts PS Fonts	Print samples and information about the fonts that are available in each printer language.
<b>Print Directory</b>	Print the resources that are stored in the flash drive or hard disk. <b>Note:</b> This menu item appears only when a flash drive or hard disk is installed.

### Network

Menu item	Description
<b>Network Setup Page</b>	Print a page that shows the configured network and wireless settings on the printer. <b>Note:</b> This menu item appears only in network printers or printers connected to print servers.
<b>Wi-Fi Direct Connected Clients</b>	Print a page that shows the list of devices that are connected to the printer using Wi-Fi Direct. <b>Note:</b> This menu item appears only when Enable Wi-Fi Direct is set to On.

## Help

Menu item	Description
Print All Guides	Prints all the guides
Color Quality Guide	Provides information about solving color quality issues
Connection Guide	Provides information about connecting the printer locally (USB) or to a network
Information Guide	Provides information about the printer
Media Guide	Provides information about loading paper and specialty media
Moving Guide	Provides information about moving, locating, or shipping the printer
Print Quality Guide	Provides information about solving print quality issues
Supplies Guide	Provides information about ordering supplies

## Troubleshooting

### Troubleshooting

Menu item	Description
<b>Print Quality Test Pages</b>	Print sample pages to identify and correct print quality defects.



# Securing the printer

## Locating the security slot

The printer is equipped with a security lock feature. Attach a security lock compatible with most laptop computers in the location shown to secure the printer in place.



## Erasing printer memory

To erase volatile memory or buffered data in your printer, turn off the printer.

To erase nonvolatile memory or individual settings, device and network settings, security settings, and embedded solutions, do the following:

- 1 From the home screen, touch **Settings > Device > Maintenance > Out of Service Erase**.
- 2 Select the **Sanitize all information on nonvolatile memory** check box, and then touch **ERASE**.
- 3 Select **Start initial setup wizard** or **Leave printer offline**, and then touch **Next**.
- 4 Start the operation.

## Erasing printer hard disk memory

- 1 From the home screen, touch **Settings > Device > Maintenance > Out of Service Erase**.
- 2 Select the **Sanitize all information on hard disk** check box, and then touch **ERASE**.
- 3 Select a method to erase data.
- 4 Start the operation.

**Note:** This process can take from several minutes to more than an hour, making the printer unavailable for other tasks.

## Encrypting the printer hard disk

This process erases all contents in the hard disk. If necessary, back up important data from the printer before starting the encryption.

- 1 From the home screen, touch **Settings** > **Security** > **Disk Encryption** > **Start encryption**.
- 2 Follow the instructions on the display.

### Notes:

- To avoid loss of data, do not turn off the printer during the encryption process.
- This process can take from several minutes to more than an hour, making the printer unavailable for other tasks.
- After encryption, the printer automatically restarts.

## Restoring factory default settings

- 1 From the home screen, touch **Settings** > **Device** > **Restore Factory Defaults**.
- 2 Touch **Restore Settings** > select the settings that you want to restore > **RESTORE**.
- 3 Start the operation.

## Statement of Volatility

Type of memory	Description
Volatile memory	The printer uses standard random access memory (RAM) to buffer temporarily user data during simple print and copy jobs.
Non-volatile memory	The printer may use two forms of non-volatile memory: EEPROM and NAND (flash memory). Both types are used to store the operating system, printer settings, network information, scanner and bookmark settings, and embedded solutions.
Hard disk memory	Some printers may have a hard disk drive installed. The printer hard disk is designed for printer-specific functionality. The hard disk lets the printer retain buffered user data from complex print jobs, form data, and font data.

Erase the content of any installed printer memory in the following circumstances:

- The printer is decommissioned.
- The printer hard disk is replaced.
- The printer is moved to a different department or location.
- The printer is serviced by someone from outside your organization.

- The printer is removed from your premises for service.
- The printer is sold to another organization.

**Disposing of a printer hard disk**

- **Degaussing**—Flushes the hard disk with a magnetic field that erases stored data
- **Crushing**—Physically compresses the hard disk to break component parts and render them unreadable
- **Milling**—Physically shreds the hard disk into small metal bits

**Note:** To guarantee that all data are completely erased, destroy physically each hard disk where data is stored.

# Maintaining the printer

**Warning—Potential Damage:** Failure to maintain optimum printer performance periodically, or to replace parts and supplies, may cause damage to your printer.

## Adjusting the speaker volume

### Adjusting the default internal speaker volume

- 1 From the control panel, navigate to:  
**Settings > Device > Preferences > Audio Feedback**
- 2 Adjust the volume.

**Notes:**

- If Quiet Mode is enabled, then audible alerts are turned off. This setting also slows the printer performance.
- The volume resets to the default value after the session is logged out or when the printer wakes from Sleep or Hibernate mode.

## Networking

### Connecting the printer to a Wi-Fi network

- 1 From the home screen, navigate to:  
**Settings > Network/Ports > Wireless**
- 2 Select **Setup On Printer Panel** and then follow the instructions on the display.  
**Note:** For Wi-Fi-network-ready printer models, a prompt for Wi-Fi network setup appears during initial setup.

### Connecting the printer to a wireless network using Wi-Fi Protected Setup (WPS)

Before you begin, make sure that:

- The access point (wireless router) is WPS-certified or WPS-compatible. For more information, see the documentation that came with your access point.
- A wireless network adapter is installed in your printer. For more information, see the instructions that came with the adapter.

### Using the Push Button method

- 1 From the control panel, navigate to:  
**Settings > Network/Ports > Wireless > Wi-Fi Protected Setup > Start Push Button Method**
- 2 Follow the instructions on the display.

### Using the personal identification number (PIN) method

- 1 From the control panel, navigate to:  
**Settings > Network/Ports > Wireless > Wi-Fi Protected Setup > Start PIN Method**
- 2 Copy the eight-digit WPS PIN.
- 3 Open a Web browser, and then type the IP address of your access point in the address field.

#### Notes:

- View the printer IP address on the printer home screen. The IP address appears as four sets of numbers separated by periods, such as 123.123.123.123.
  - If you are using a proxy server, then temporarily disable it to load the Web page correctly.
- 4 Access the WPS settings. For more information, see the documentation that came with your access point.
  - 5 Enter the eight-digit PIN, and then save the changes.

## Connecting a mobile device to the printer wireless network

- 1 Enable Wi-Fi Direct in the printer. From the home screen, touch **Settings > Network/Ports > Wireless > Enable Wi-Fi Direct**.

#### Notes:

- The Wi-Fi Direct SSID and password are generated automatically. To view the Wi-Fi Direct SSID and password, go to the Wi-Fi Direct menu.
- You can also change the SSID and password, if necessary.

- 2 Connect your mobile device to the printer wireless network.

## Deactivating the Wi-Fi network

- 1 From the home screen, touch **Settings > Network/Ports > Network Overview > Active Adapter > Standard Network**.
- 2 Follow the instructions on the display.

## Setting up serial printing (Windows only)

- 1 Set the parameters in the printer.
  - a From the control panel, navigate to the menu for the port settings.
  - b Locate the menu for the serial port settings, and then adjust the settings, if necessary.
  - c Apply the changes.

- 2 From your computer, open the printers folder, and then select your printer.
- 3 Open the printer properties, and then select the COM port from the list.
- 4 Set the COM port parameters in Device Manager.

**Notes:**

- Serial printing reduces printing speed.
- Make sure that the serial cable is connected to the serial port on your printer.

## Cleaning the printer



**CAUTION—SHOCK HAZARD:** To avoid the risk of electrical shock when cleaning the exterior of the printer, unplug the power cord from the electrical outlet and disconnect all cables from the printer before proceeding.

**Notes:**

- Perform this task after every few months.
  - Damage to the printer caused by improper handling is not covered by the printer warranty.
- 1 Turn off the printer, and then unplug the power cord from the electrical outlet.
  - 2 Remove paper from the standard bin and multipurpose feeder.
  - 3 Remove any dust, lint, and pieces of paper around the printer using a soft brush or vacuum.
  - 4 Wipe the outside of the printer with a damp, soft, lint-free cloth.

**Notes:**

- Do not use household cleaners or detergents, as they may damage the finish of the printer.
- Make sure that all areas of the printer are dry after cleaning.

- 5 Connect the power cord to the electrical outlet, and then turn on the printer.



**CAUTION—POTENTIAL INJURY:** To avoid the risk of fire or electrical shock, connect the power cord to an appropriately rated and properly grounded electrical outlet that is near the product and easily accessible.

## Ordering parts and supplies

### Checking the status of parts and supplies

- 1 From the home screen, touch **Status/Supplies**.
- 2 Select the parts or supplies that you want to check.

**Note:** You can also access this setting by touching the top section of the home screen.

## Ordering toner cartridges

### Notes:

- The estimated cartridge yield is based on the ISO/IEC 19798 standard.
- Extremely low print coverage for extended periods of time may negatively affect actual yield and may cause cartridge parts to fail before toner exhaustion.

To order toner cartridges, contact the place where you purchased the printer.

## Ordering a waste toner bottle

To order a waste toner bottle, contact the place where you purchased the printer.

## Configuring supply notifications

- 1 Open a web browser, and then type the printer IP address in the address field.

### Notes:

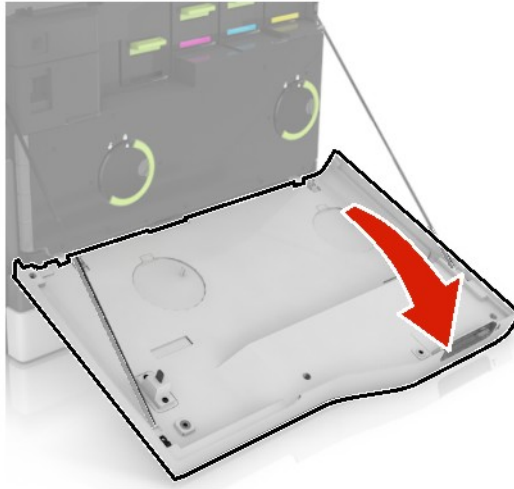
- View the printer IP address on the printer home screen. The IP address appears as four sets of numbers separated by periods, such as 123.123.123.123.
- If you are using a proxy server, then temporarily disable it to load the web page correctly.

- 2 Click **Settings > Device > Notifications**.
- 3 From the Supplies menu, click **Custom Supply Notifications**.
- 4 Select a notification for each supply item.
- 5 Apply the changes.

## Replacing parts and supplies

### Replacing a toner cartridge

- 1 Open door A.

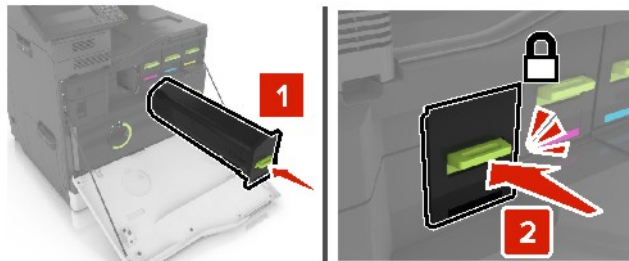


- 2 Remove the toner cartridge.



- 3 Unpack the new toner cartridge.

- 4 Insert the new toner cartridge until it *clicks* into place.

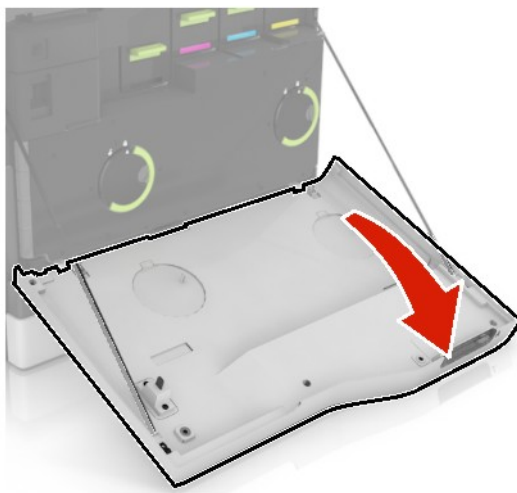


- 5 Close door A.

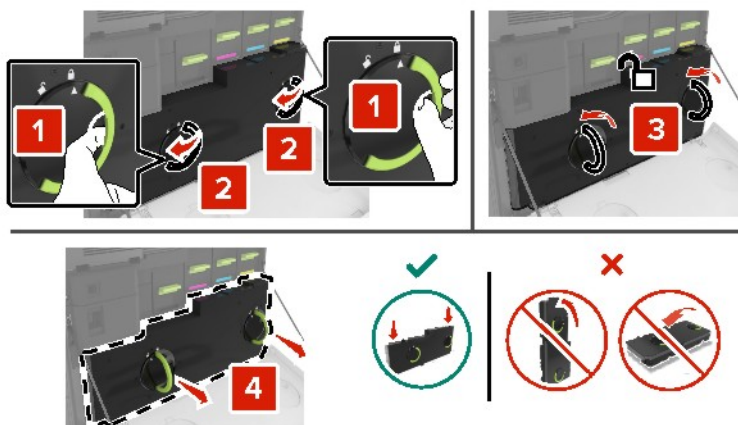


## Replacing the waste toner bottle

1 Open door A.

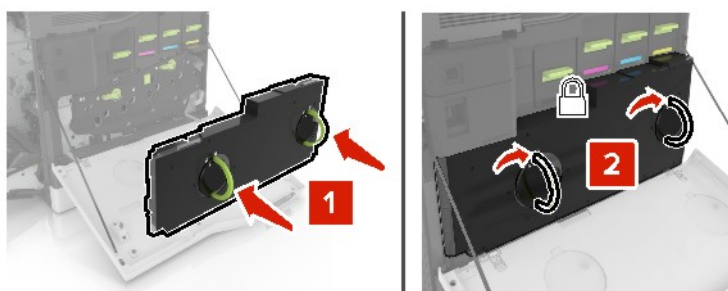


2 Remove the waste toner bottle.



3 Unpack the new waste toner bottle.

4 Insert the new waste toner bottle.

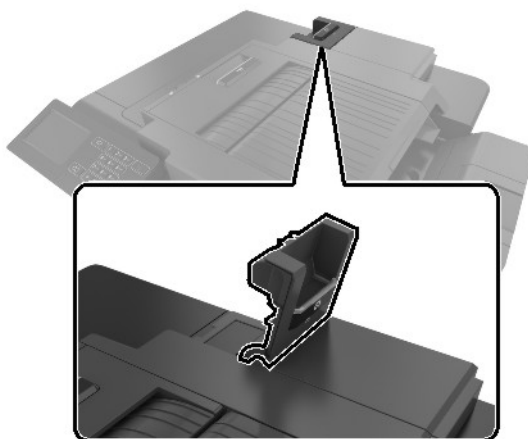


5 Close door A.

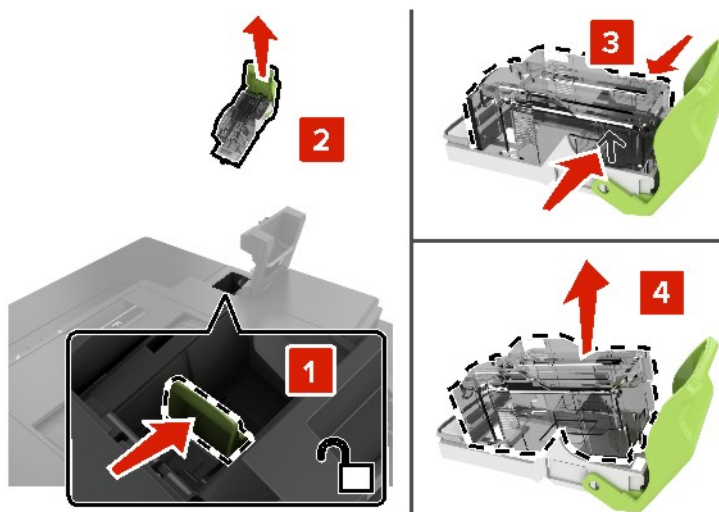
## Replacing the staple cartridge unit

### Replacing the staple cartridge in the staple finisher

- 1 Open door G.

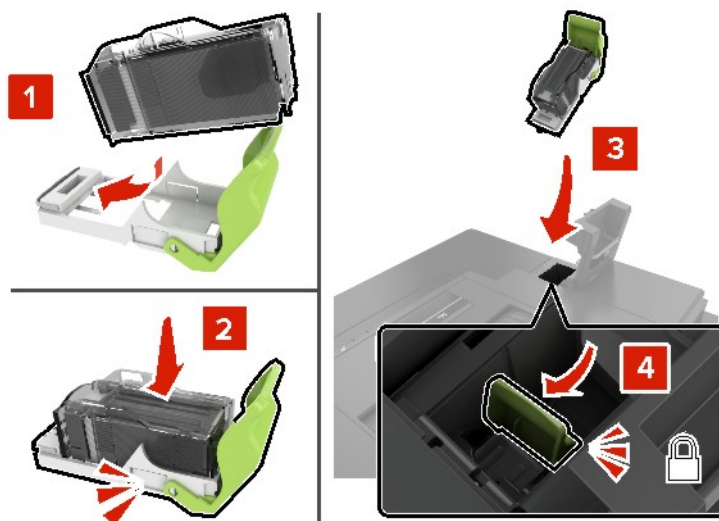


- 2 Remove the staple cartridge.



- 3 Unpack the new staple cartridge.

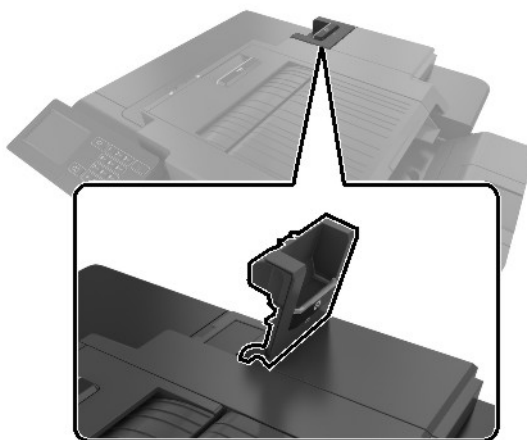
- 4 Insert the new staple cartridge until it *clicks* into place.



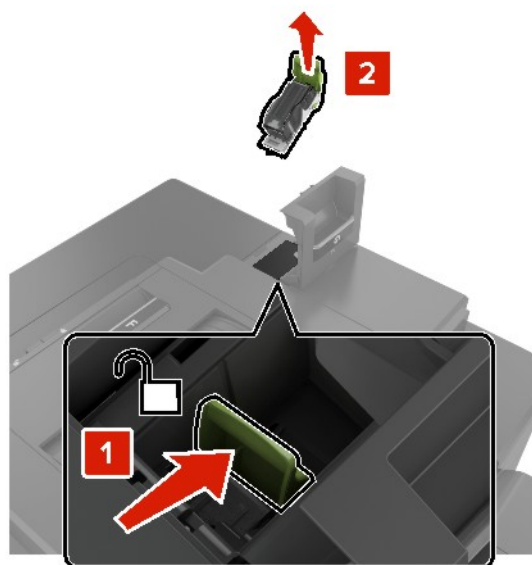
- 5 Close door G.

### Replacing the staple cartridge holder in the staple finisher

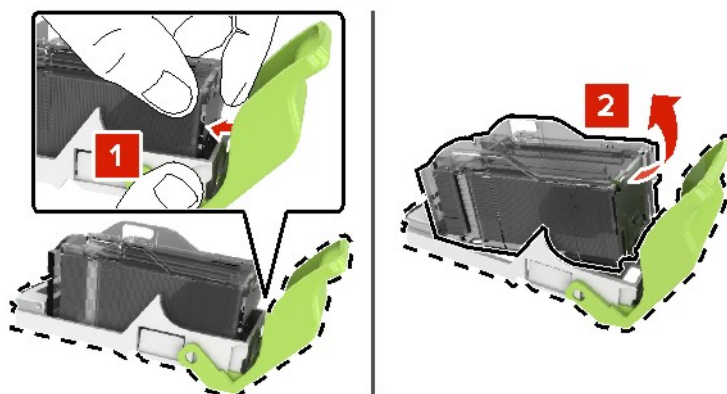
- 1 Open door G.



- 2** Pull out the staple cartridge holder.

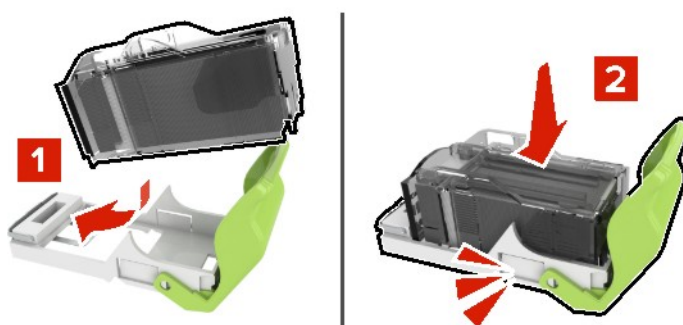


- 3** Remove the staple cartridge from the holder.

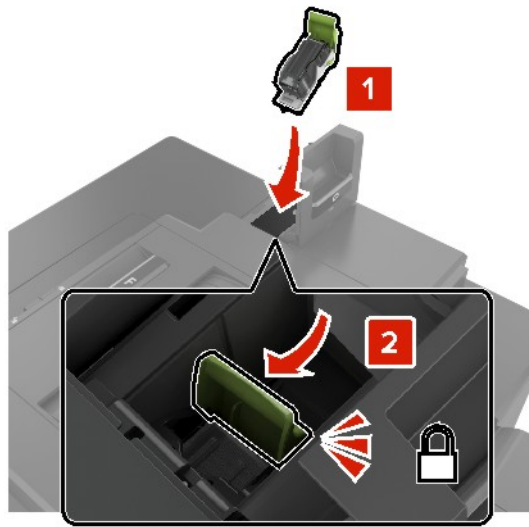


- 4** Unpack the new staple cartridge holder.

- 5** Insert the staple cartridge into the new holder until it *clicks* into place.



**6** Insert the staple cartridge holder.



**7** Close door G.

## Storing supplies

Choose a cool, clean storage area for the printer supplies. Store supplies right side up in their original packing until you are ready to use them.

Do not expose supplies to:

- Direct sunlight
- Temperatures above 35°C (95°F)
- High humidity above 80%
- Salty air
- Corrosive gases
- Heavy dust

## Moving the printer

### Moving the printer to another location



**CAUTION—POTENTIAL INJURY:** If the printer weight is greater than 20 kg (44 lb), then it may require two or more people to lift it safely.



**CAUTION—POTENTIAL INJURY:** To avoid the risk of fire or electrical shock, use only the power cord provided with this product or the manufacturer's authorized replacement.



**CAUTION—POTENTIAL INJURY:** When moving the printer, follow these guidelines to avoid personal injury or printer damage:

- Make sure that all doors and trays are closed.
- Turn off the printer, and then unplug the power cord from the electrical outlet.
- Disconnect all cords and cables from the printer.
- If the printer has separate floor-standing optional trays or output options attached to it, then disconnect them before moving the printer.
- If the printer has a caster base, then carefully roll it to the new location. Use caution when passing over thresholds and breaks in flooring.
- If the printer does not have a caster base but is configured with optional trays or output options, then remove the output options and lift the printer off the trays. Do not try to lift the printer and any options at the same time.
- Always use the handholds on the printer to lift it.
- Any cart used to move the printer must have a surface able to support the full footprint of the printer.
- Any cart used to move the hardware options must have a surface able to support the dimensions of the options.
- Keep the printer in an upright position.
- Avoid severe jarring movements.
- Make sure that your fingers are not under the printer when you set it down.
- Make sure that there is adequate clearance around the printer.

**Note:** Damage to the printer caused by improper moving is not covered by the printer warranty.

## Shipping the printer

When shipping the printer, use the original packaging or contact the place where you purchased the printer.

## Saving energy and paper

### Configuring the power save mode settings

#### Sleep mode

- 1 From the home screen, touch **Settings** > **Device** > **Power Management** > **Timeouts** > **Sleep Mode**.
- 2 Specify the amount of time that the printer stays idle before it enters Sleep Mode.

#### Hibernate mode

- 1 From the home screen, touch **Settings** > **Device** > **Power Management** > **Timeouts** > **Hibernate Timeout**.
- 2 Select the amount of time that the printer stays idle before it enters Hibernate mode.

#### Notes:

- For Hibernate Timeout to work, set Hibernate Timeout on Connection to Hibernate.
- The Embedded Web Server is disabled when the printer is in Hibernate mode.

## Adjusting the brightness of the printer display

- 1 From the home screen, touch **Settings** > **Device** > **Preferences** > **Screen Brightness**.
- 2 Adjust the setting.

## Conserving supplies

- Print on both sides of the paper.

**Note:** Two-sided printing is the default setting in the print driver.

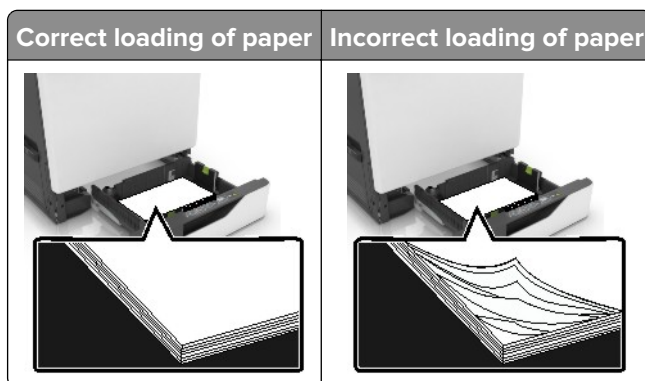
- Print multiple pages on a single sheet of paper.
- Use the preview feature to see how the document looks like before printing it.
- Print one copy of the document to check its content and format for accuracy.

# Clearing jams

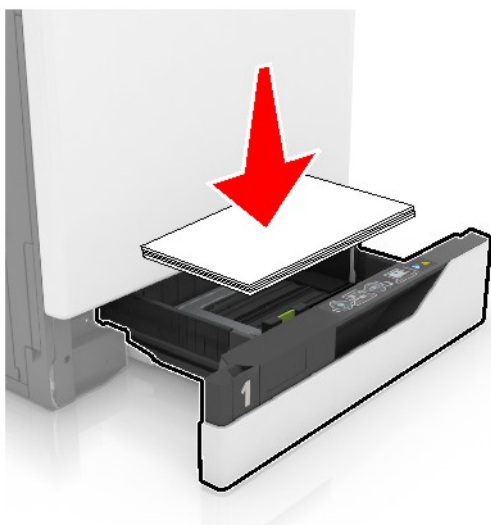
## Avoiding jams

### Load paper properly

- Make sure that the paper lies flat in the tray.



- Do not load or remove a tray while the printer is printing.
- Do not load too much paper. Make sure that the stack height is below the maximum paper fill indicator.
- Do not slide paper into the tray. Load paper as shown in the illustration.



- Make sure that the paper guides are positioned correctly and are not pressing tightly against the paper or envelopes.
- Push the tray firmly into the printer after loading paper.

### Use recommended paper

- Use only recommended paper or specialty media.
- Do not load paper that is wrinkled, creased, damp, bent, or curled.



- Flex, fan, and align the paper edges before loading.



- Do not use paper that has been cut or trimmed by hand.
- Do not mix paper sizes, weights, or types in the same tray.
- Make sure that the paper size and type are set correctly on the computer or printer control panel.
- Store paper according to manufacturer recommendations.

# Identifying jam locations

**Notes:**

- When Jam Assist is set to On, the printer flushes blank pages or pages with partial prints after a jammed page has been cleared. Check your printed output for blank pages.
- When Jam Recovery is set to On or Auto, the printer reprints jammed pages.



	Jam locations
1	Multipurpose feeder
2	Door B
3	Standard bin
4	Door G
5	Finisher bin
6	Trays

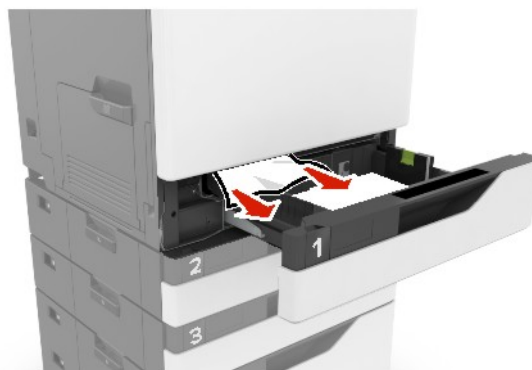
## Paper jam in trays

- 1 Pull out the tray.



- 2 Remove the jammed paper.

**Note:** Make sure that all paper fragments are removed.



- 3 Insert the tray.

- 4 Open the tray cover.



- 5 Remove the jammed paper.

**Note:** Make sure that all paper fragments are removed.

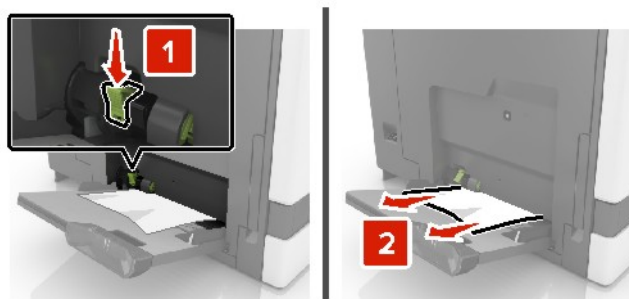


- 6 Close the tray cover.

## Paper jam in the multipurpose feeder

- 1 Remove paper from the multipurpose feeder.
- 2 Remove the jammed paper.

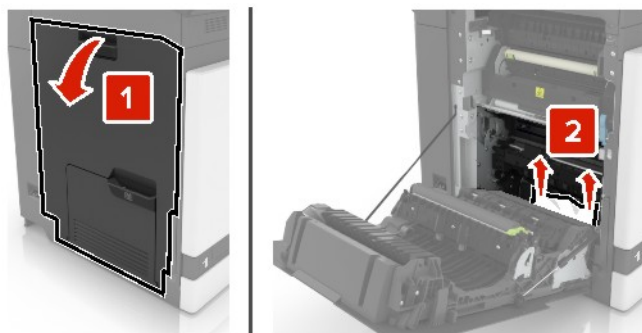
**Note:** Make sure that all paper fragments are removed.



- 3 Open door B, and then remove any paper fragments.



**CAUTION—HOT SURFACE:** The inside of the printer might be hot. To reduce the risk of injury from a hot component, allow the surface to cool before touching it.



4 Close door B.

5 Flex, fan, and align the paper edges before loading.



6 Reload paper.

## Paper jam in the standard bin

1 Remove the jammed paper.

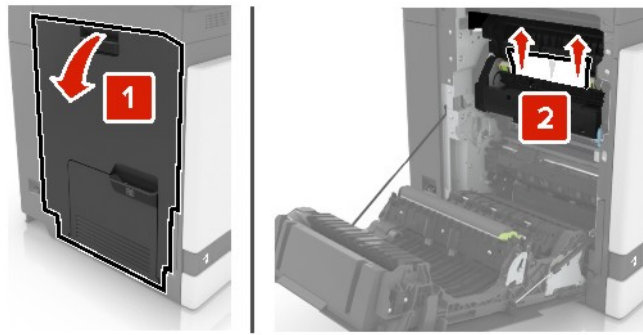
**Note:** Make sure that all paper fragments are removed.



2 Open door B, and then remove any paper fragments.



**CAUTION—HOT SURFACE:** The inside of the printer might be hot. To reduce the risk of injury from a hot component, allow the surface to cool before touching it.



**3** Close door B.

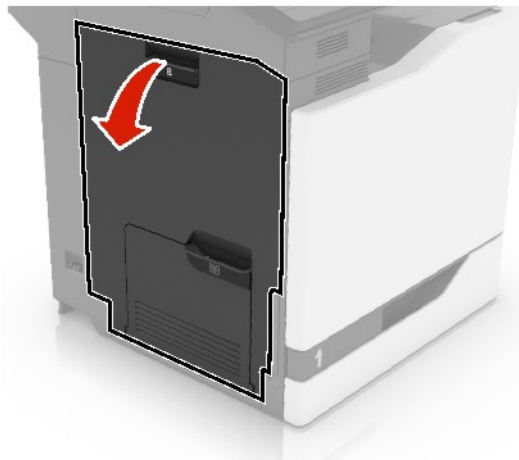
## Paper jam in door B

### Paper jam in the fuser

**1** Open door B.

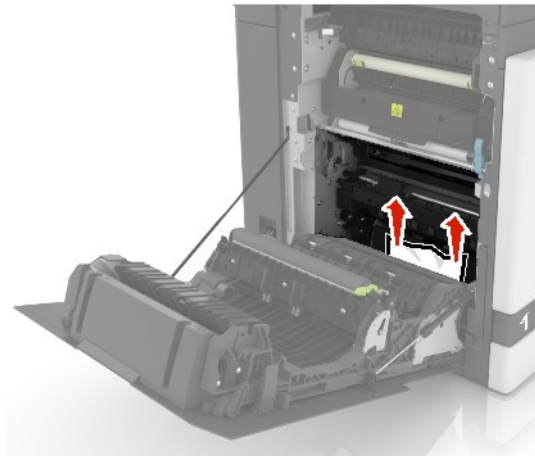


**CAUTION—HOT SURFACE:** The inside of the printer might be hot. To reduce the risk of injury from a hot component, allow the surface to cool before touching it.

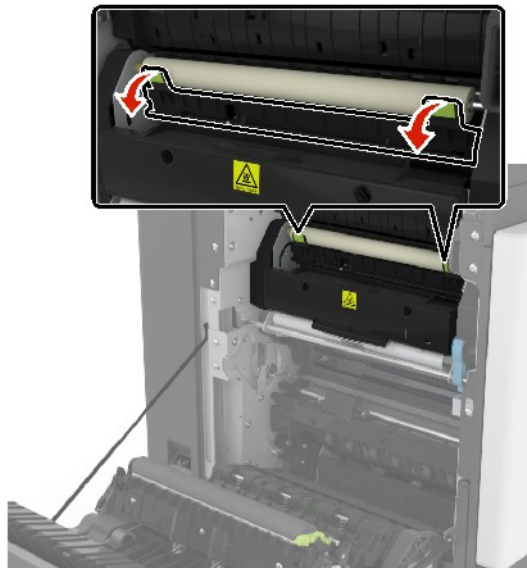


**2** Remove the jammed paper.

**Note:** Make sure that all paper fragments are removed.

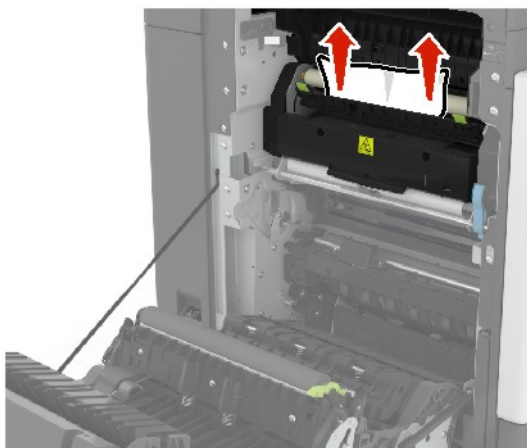


**3** Open the fuser access door.



**4** Remove the jammed paper.

**Note:** Make sure that all paper fragments are removed.



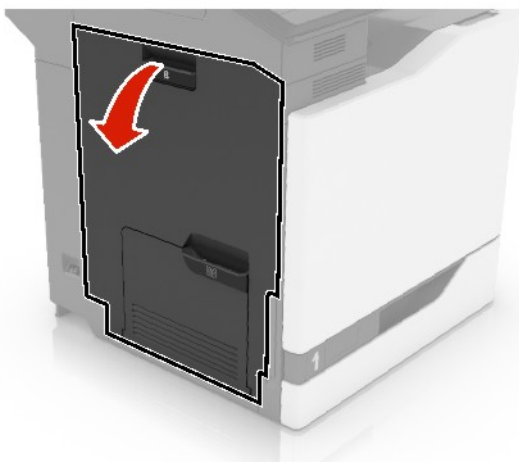
- 5 Close door B.

### Paper jam in the duplex unit

- 1 Open door B.

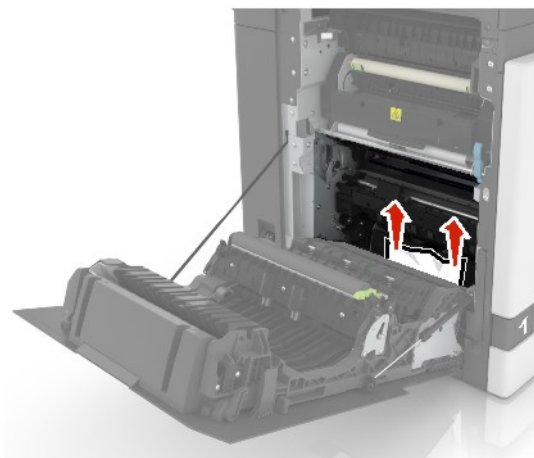


**CAUTION—HOT SURFACE:** The inside of the printer might be hot. To reduce the risk of injury from a hot component, allow the surface to cool before touching it.



- 2 Remove the jammed paper.

**Note:** Make sure that all paper fragments are removed.

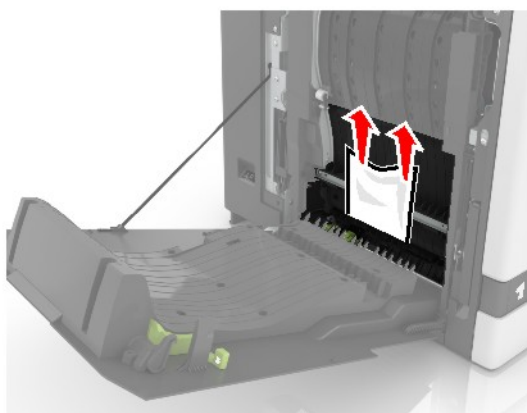


**3** Open the duplex cover.



**4** Remove the jammed paper.

**Note:** Make sure that all paper fragments are removed.



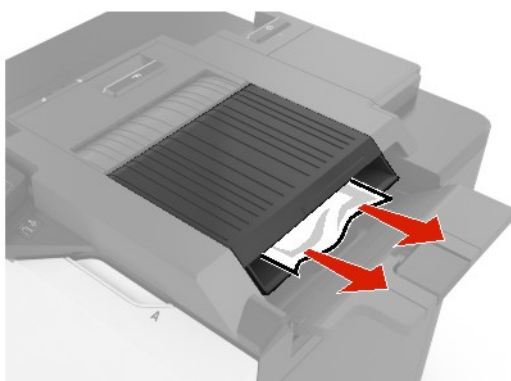
**5** Close the duplex cover and door B.

## Paper jam in the finisher bin

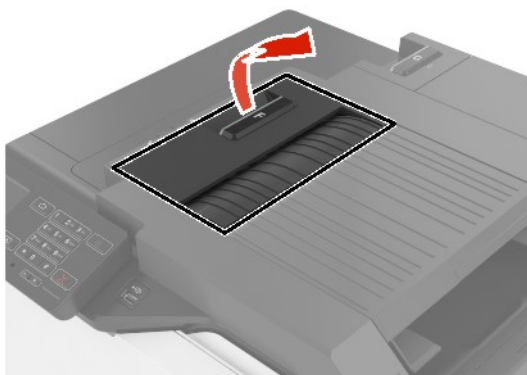
**1** Remove the jammed paper.

**Note:** Make sure that all paper fragments are removed.



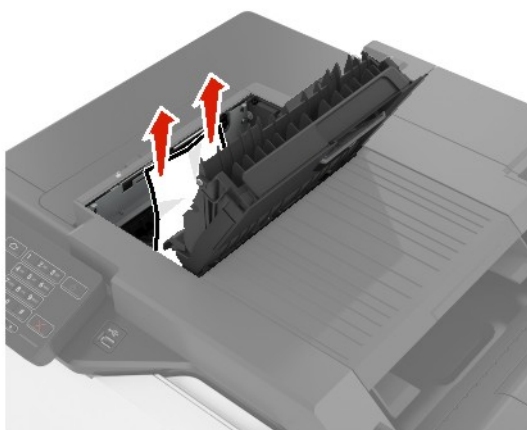


**2** Open door F.



**3** Remove the jammed paper.

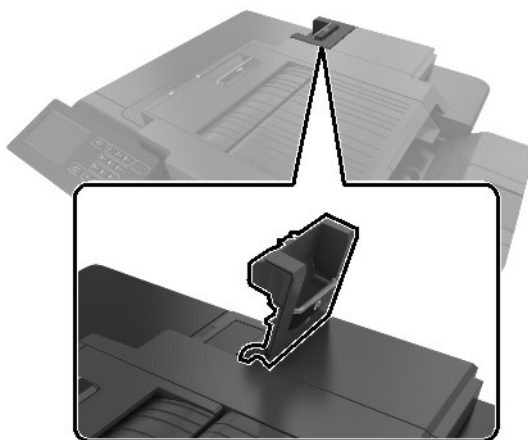
**Note:** Make sure that all paper fragments are removed.



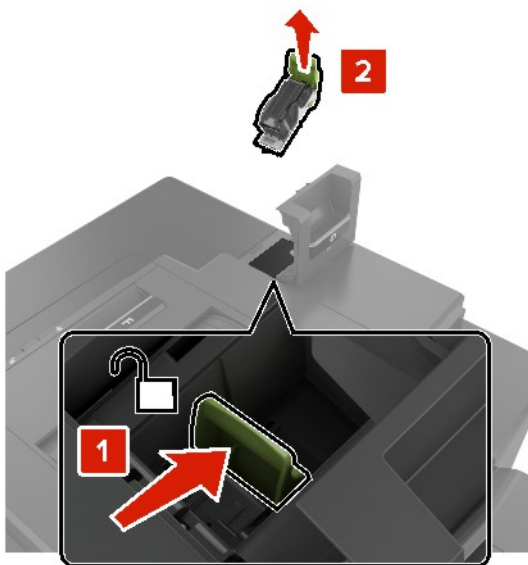
**4** Close door F.

## Staple jam in door G

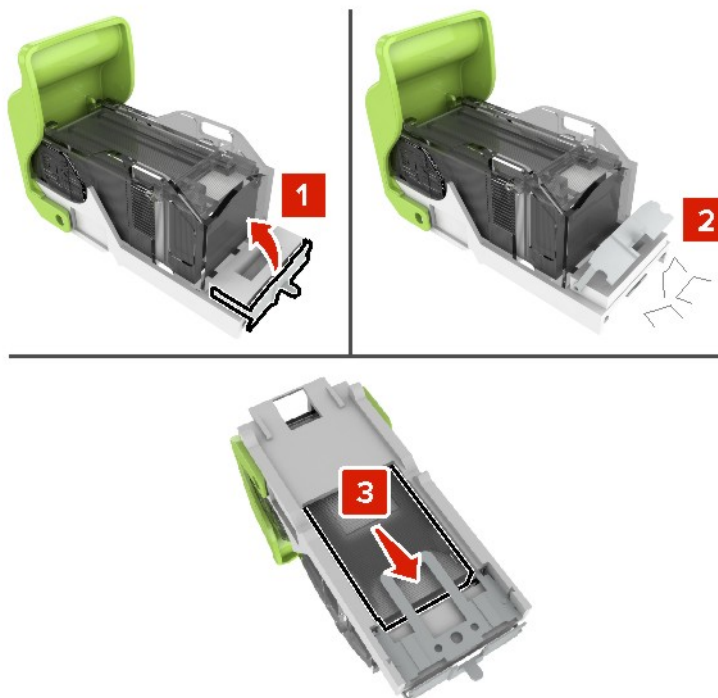
- 1 Open door G.



- 2 Pull out the staple cartridge holder.



- 3** Open the staple guard, and then remove the loose staples.

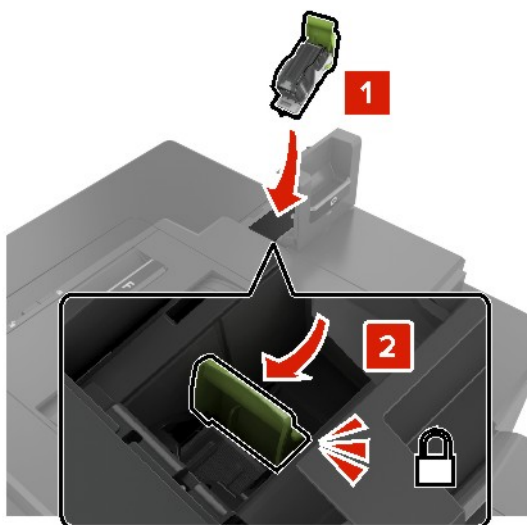


**Note:** Do not insert the staples that came out of the cartridge.

- 4** Close the staple guard.



**5** Insert the staple cartridge holder.



**6** Close door G.

# Troubleshooting

## Configuring the SMTP server

**Note:** In some printer models, this setting can be configured only from the Embedded Web Server.

### From the control panel

- 1 From the control panel, navigate to:  
**Settings > Device > Notifications > E-mail Alerts Setup > E-mail Setup**
- 2 Configure the settings.

### From the Embedded Web Server

- 1 Open a web browser, and then type the printer IP address in the address field.

**Notes:**

- View the printer IP address on the printer home screen. The IP address appears as four sets of numbers separated by periods, such as 123.123.123.123.
- If you are using a proxy server, then temporarily disable it to load the web page correctly.

- 2 Click **Settings > Device > Notifications > E-mail Alerts Setup**.
- 3 From the E-mail Setup section, configure the settings.
- 4 Click **Save**.

## Network connection problems

### Cannot open Embedded Web Server

Action	Yes	No
<b>Step 1</b> Check if the printer is on.  Is the printer on?	Go to step 2.	Turn on the printer.
<b>Step 2</b> Make sure that the printer IP address is correct.  <b>Notes:</b> <ul style="list-style-type: none"> <li>• View the IP address on the home screen.</li> <li>• An IP address appears as four sets of numbers separated by periods, such as 123.123.123.123.</li> </ul> Is the printer IP address correct?	Go to step 3.	Type the correct printer IP address in the address field.

Action	Yes	No
<b>Step 3</b> Check if you are using a supported browser: <ul style="list-style-type: none"> <li>• Internet Explorer version 11 or later</li> <li>• Microsoft Edge</li> <li>• Safari version 6 or later</li> <li>• Google Chrome™ version 32 or later</li> <li>• Mozilla Firefox version 24 or later</li> </ul> Is your browser supported?	Go to step 4.	Install a supported browser.
<b>Step 4</b> Check if the network connection is working.  Is the network connection working?	Go to step 5.	Contact your administrator.
<b>Step 5</b> Make sure that the cable connections to the printer and print server are secure. For more information, see the documentation that came with the printer.  Are the cable connections secure?	Go to step 6.	Secure the cable connections.
<b>Step 6</b> Check if the web proxy servers are disabled.  Are the web proxy servers disabled?	Go to step 7.	Contact your administrator.
<b>Step 7</b> Access the Embedded Web Server.  Did the Embedded Web Server open?	The problem is solved.	Contact your <a href="#">dealer</a> .

## Unable to read flash drive

Action	Yes	No
<b>Step 1</b> Check if the printer is not busy processing another job.  Is the printer ready?	Go to step 2.	Wait for the printer to finish processing the other job.
<b>Step 2</b> Check if the flash drive is inserted into the front USB port. <b>Note:</b> The flash drive does not work when it is inserted into the rear USB port.  Is the flash drive inserted into the correct port?	Go to step 3.	Insert the flash drive into the correct port.

Action	Yes	No
<b>Step 3</b> Check if the flash drive is supported. For more information, see <a href="#">“Supported flash drives and file types” on page 32.</a>  Is the flash drive supported?	Go to step 4.	Insert a supported flash drive.
<b>Step 4</b> <b>a</b> Check if the USB port is enabled. For more information, see <a href="#">“Enabling the USB port” on page 107.</a> <b>b</b> Remove, and then insert the flash drive.  Does the printer recognize the flash drive?	The problem is solved.	Contact your <a href="#">dealer</a> .

## Enabling the USB port

From the home screen, touch **Settings > Network/Ports > USB > Enable USB Port**.

## Checking the printer connectivity

- 1 From the home screen, touch **Settings > Reports > Network > Network Setup Page**.
- 2 Check the first section of the network setup page, and confirm that the status is connected.  
If the status is not connected, then the LAN drop may be inactive, or the network cable may be unplugged or malfunctioning. Contact your administrator for assistance.

## Hardware options problems

### Defective flash detected

Contact your [dealer](#).

### Not enough free space in flash memory for resources

Contact your [dealer](#).

### Unformatted flash detected

Try one or more of the following:

- From the control panel, select **Continue** to stop the defragmentation and continue printing.
- Format the flash memory.

**Note:** If the error message remains, then the flash memory may be defective and needs to be replaced. To replace the flash memory, contact your [dealer](#).

## Issues with supplies

### Replace cartridge, printer region mismatch

Install the correct toner cartridge.

### Non-Printer Manufacturer supply

The printer has detected an unrecognized supply or part installed in the printer.

Your printer is designed to function best with genuine supplies and parts made by the printer manufacturer. Use of third-party supplies or parts may affect the performance, reliability, or life of the printer and its imaging components.

All life indicators are designed to function with supplies and parts from the printer manufacturer and may deliver unpredictable results if third-party supplies or parts are used. Imaging component usage beyond the intended life may damage your printer or associated components.

**Warning—Potential Damage:** Use of third-party supplies or parts can affect warranty coverage. Damage caused by the use of third-party supplies or parts may not be covered by the warranty.

To accept any and all of these risks and to proceed with the use of non-genuine supplies or parts in your printer, from the control panel, press and hold **X** and **#** simultaneously for 15 seconds.

If you do not want to accept these risks, then remove the third-party supply or part from your printer and install a genuine supply or part from the printer manufacturer.

## Paper feed problems

### Envelope seals when printing

Action	Yes	No
<b>Step 1</b> <b>a</b> Use an envelope that has been stored in a dry environment. <b>Note:</b> Printing on envelopes with high moisture content can seal the flaps. <b>b</b> Send the print job.  Does the envelope seal when printing?	Go to step 2.	The problem is solved.
<b>Step 2</b> <b>a</b> Make sure that the paper type is set to Envelope. From the control panel, touch <b>Settings &gt; Paper &gt; Tray Configuration &gt; Paper Size/Type</b> > select a paper source <b>b</b> Send the print job.  Does the envelope seal when printing?	Contact your <a href="#">dealer</a> .	The problem is solved.



## Collated printing does not work

Action	Yes	No
<b>Step 1</b> <b>a</b> From the control panel, touch <b>Settings &gt; Print &gt; Layout &gt; Collate &gt; On [1,2,1,2,1,2]</b> . <b>b</b> Print the document.  Are the pages collated correctly?	The problem is solved.	Go to step 2.
<b>Step 2</b> <b>a</b> From the document that you are trying to print, open the Print dialog, and then select <b>Collate</b> . <b>b</b> Print the document.  Are the pages collated correctly?	The problem is solved.	Go to step 3.
<b>Step 3</b> <b>a</b> Reduce the number of pages to print. <b>b</b> Print the document.  Are the pages collated correctly?	The problem is solved.	Contact your <a href="#">dealer</a> .

## Paper curl



Action	Yes	No
<b>Step 1</b> <b>a</b> Adjust the guides in the tray to the correct position for the paper loaded. <b>b</b> Print the document.  Is the paper curled?	Go to step 2.	The problem is solved.

Action	Yes	No
<b>Step 2</b> <b>a</b> Depending on your operating system, specify the paper type from the Printing Preferences or Print dialog.  <b>Notes:</b> <ul style="list-style-type: none"> <li>• Make sure that the setting matches the paper loaded.</li> <li>• You can also change the setting on the printer control panel. From the home screen, touch <b>Settings &gt; Paper &gt; Tray Configuration &gt; Paper Size/Type</b>.</li> </ul> <b>b</b> Print the document.  Is the paper curled?	Go to step 3.	The problem is solved.
<b>Step 3</b> Print on the other side of the paper. <b>a</b> Remove paper, flip it over, and then reload paper. <b>b</b> Print the document.  Is the paper curled?	Go to step 4.	The problem is solved.
<b>Step 4</b> <b>a</b> Load paper from a fresh package. <b>Note:</b> Paper absorbs moisture due to high humidity. Store paper in its original wrapper until you are ready to use it. <b>b</b> Print the document.  Is the paper curled?	Contact your <a href="#">dealer</a> .	The problem is solved.

## Tray linking does not work

Action	Yes	No
<b>Step 1</b> <b>a</b> Check if the trays contain the same paper size and paper type. <b>b</b> Check if the paper guides are positioned correctly. <b>c</b> Print the document.  Do the trays link correctly?	The problem is solved.	Go to step 2.
<b>Step 2</b> <b>a</b> From the home screen, touch <b>Settings &gt; Paper &gt; Tray Configuration &gt; Paper Size/Type</b> . <b>b</b> Set the paper size and paper type to match the paper loaded in the linked trays. <b>c</b> Print the document.  Do the trays link correctly?	The problem is solved.	Go to step 3.

Action	Yes	No
<b>Step 3</b> <b>a</b> Make sure that Tray Linking is set to Automatic. For more information, see <a href="#">“Linking trays” on page 21</a> . <b>b</b> Print the document.  Do the trays link correctly?	The problem is solved.	Contact your <a href="#">dealer</a> .

## Paper frequently jams

Action	Yes	No
<b>Step 1</b> <b>a</b> Pull out the tray. <b>b</b> Check if paper is loaded correctly. <b>Notes:</b> <ul style="list-style-type: none"> <li>Make sure that the paper guides are positioned correctly.</li> <li>Make sure that the stack height is below the maximum paper fill indicator.</li> <li>Make sure to print on recommended paper size and type.</li> </ul> <b>c</b> Insert the tray. <b>d</b> Print the document.  Do paper jams occur frequently?	Go to step 2.	The problem is solved.
<b>Step 2</b> <b>a</b> From the home screen, touch <b>Settings &gt; Paper &gt; Tray Configuration &gt; Paper Size/Type</b> . <b>b</b> Set the correct paper size and type. <b>c</b> Print the document.  Do paper jams occur frequently?	Go to step 3.	The problem is solved.
<b>Step 3</b> <b>a</b> Load paper from a fresh package. <b>Note:</b> Paper absorbs moisture due to high humidity. Store paper in its original wrapper until you are ready to use it. <b>b</b> Print the document.  Do paper jams occur frequently?	Contact your <a href="#">dealer</a> .	The problem is solved.

## Jammed pages are not reprinted

Action	Yes	No
<p><b>a</b> From the home screen, touch <b>Settings &gt; Device &gt; Notifications &gt; Jam Content Recovery</b>.</p> <p><b>b</b> In the Jam Recovery menu, select <b>On</b> or <b>Auto</b>.</p> <p><b>c</b> Print the document.</p> <p>Are the jammed pages reprinted?</p>	The problem is solved.	Contact your <a href="#">dealer</a> .

## Printing problems

### Confidential and other held documents do not print

Action	Yes	No
<p><b>Step 1</b></p> <p><b>a</b> From the control panel, check if the documents appear in the Held Jobs list.</p> <p><b>Note:</b> If the documents are not listed, then print the documents using the Print and Hold options.</p> <p><b>b</b> Print the documents.</p> <p>Are the documents printed?</p>	The problem is solved.	Go to step 2.
<p><b>Step 2</b></p> <p>The print job may contain a formatting error or invalid data.</p> <ul style="list-style-type: none"> <li>• Delete the print job, and then send it again.</li> <li>• For PDF files, generate a new file, and then print the documents.</li> </ul> <p>Are the documents printed?</p>	The problem is solved.	Go to step 3.
<p><b>Step 3</b></p> <p>If you are printing from the Internet, then the printer may be reading the multiple job titles as duplicates.</p> <p><b>a</b> Open the Printing Preferences dialog.</p> <p><b>b</b> From the Print and Hold tab, click <b>Use Print and Hold</b>, and then click <b>Keep duplicate documents</b>.</p> <p><b>c</b> From the Confidential Print section, enter a PIN.</p> <p><b>d</b> Print the documents.</p> <p>Are the documents printed?</p>	The problem is solved.	Go to step 4.

Action	Yes	No
<b>Step 4</b> <b>a</b> Delete some held jobs to free up printer memory. <b>b</b> Print the documents.  Are the documents printed?	The problem is solved.	Contact your <a href="#">dealer</a> .

## Slow printing

Action	Yes	No
<b>Step 1</b> Make sure that the printer cable is securely connected to the printer and to the computer, print server, option, or other network device.  Is the printer printing slow?	Go to step 2.	The problem is solved.
<b>Step 2</b> <b>a</b> Make sure that the printer is not in Quiet Mode. From the home screen, touch <b>Settings &gt; Device &gt; Maintenance &gt; Configuration Menu &gt; Device Operations &gt; Quiet Mode</b> . <b>b</b> Print the document.  Is the printer printing slow?	Go to step 3.	The problem is solved.
<b>Step 3</b> <b>a</b> Depending on your operating system, specify the print resolution from the Printing Preferences or Print dialog. <b>b</b> Set the resolution to 4800 CQ. <b>c</b> Print the document.  Is the printer printing slow?	Go to step 4.	The problem is solved.
<b>Step 4</b> <b>a</b> From the home screen, touch <b>Settings &gt; Print &gt; Quality &gt; Print Resolution</b> . <b>b</b> Set the resolution to 4800 CQ. <b>c</b> Print the document.  Is the printer printing slow?	Go to step 5.	The problem is solved.

Action	Yes	No
<p><b>Step 5</b></p> <p><b>a</b> Depending on your operating system, specify the paper type from the Printing Preferences or Print dialog.</p> <p><b>Notes:</b></p> <ul style="list-style-type: none"> <li>• Make sure that the setting matches the paper loaded.</li> <li>• You can also change the setting on the printer control panel. From the home screen, touch <b>Settings &gt; Paper &gt; Tray Configuration &gt; Paper Size/Type</b>.</li> <li>• Heavier paper prints more slowly.</li> <li>• Paper narrower than letter, A4, and legal may print more slowly.</li> </ul> <p><b>b</b> Print the document.</p> <p>Is the printer printing slow?</p>	Go to step 6.	The problem is solved.
<p><b>Step 6</b></p> <p><b>a</b> Make sure that the printer settings for texture and weight match the paper being loaded.</p> <p>From the home screen, touch <b>Settings &gt; Paper &gt; Media Configuration &gt; Media Types</b>.</p> <p><b>Note:</b> Rough paper texture and heavy paper weight may print more slowly.</p> <p><b>b</b> Print the document.</p> <p>Is the printer printing slow?</p>	Go to step 7.	The problem is solved.
<p><b>Step 7</b></p> <p>Remove held jobs.</p> <p>Is the printer printing slow?</p>	Go to step 8.	The problem is solved.
<p><b>Step 8</b></p> <p><b>a</b> Make sure that the printer is not overheating.</p> <p><b>Notes:</b></p> <ul style="list-style-type: none"> <li>• Allow the printer to cool down after a long print job.</li> <li>• Observe the recommended ambient temperature for the printer. For more information, see <a href="#">“Selecting a location for the printer” on page 8</a>.</li> </ul> <p><b>b</b> Print the document.</p> <p>Is the printer printing slow?</p>	Contact your <a href="#">dealer</a> .	The problem is solved.

## Print jobs do not print


Action	Yes	No
<b>Step 1</b> <b>a</b> From the document you are trying to print, open the Print dialog, and then check if you have selected the correct printer. <b>b</b> Print the document.  Is the document printed?	The problem is solved.	Go to step 2.
<b>Step 2</b> <b>a</b> Check if the printer is on. <b>b</b> Resolve any error messages that appear on the display. <b>c</b> Print the document.  Is the document printed?	The problem is solved.	Go to step 3.
<b>Step 3</b> <b>a</b> Check if the ports are working and if the cables are securely connected to the computer and the printer. For more information, see the setup documentation that came with the printer. <b>b</b> Print the document.  Is the document printed?	The problem is solved.	Go to step 4.
<b>Step 4</b> <b>a</b> Turn off the printer, wait for about 10 seconds, and then turn on the printer. <b>b</b> Print the document.  Is the document printed?	The problem is solved.	Go to step 5.
<b>Step 5</b> <b>a</b> Remove, and then reinstall the print driver. <b>b</b> Print the document.  Is the document printed?	The problem is solved.	Contact your <a href="#">dealer</a> .

## Job prints from the wrong tray or on the wrong paper

Action	Yes	No
<b>Step 1</b> <b>a</b> Check if you are printing on the correct paper. <b>b</b> Print the document.  Is the document printed on the correct paper?	Go to step 2.	Load the correct paper size and paper type.

Action	Yes	No
<b>Step 2</b> <b>a</b> Depending on your operating system, specify the paper size and paper type from the Printing Preferences or Print dialog. <b>Note:</b> You can also change the settings on the printer control panel. From the home screen, touch <b>Settings &gt; Paper &gt; Tray Configuration &gt; Paper Size/Type</b> . <b>b</b> Make sure that the settings match the paper loaded. <b>c</b> Print the document.  Is the document printed on the correct paper?	The problem is solved.	Go to step 3.
<b>Step 3</b> <b>a</b> Check if the trays are linked. For more information, see <a href="#">“Linking trays” on page 21</a> . <b>b</b> Print the document.  Is the document printed from the correct tray?	The problem is solved.	Contact your <a href="#">dealer</a> .

## The printer is not responding

Action	Yes	No
<b>Step 1</b> Check if the power cord is connected to the electrical outlet.  <b>CAUTION—POTENTIAL INJURY:</b> To avoid the risk of fire or electrical shock, connect the power cord to an appropriately rated and properly grounded electrical outlet that is near the product and easily accessible.  Is the printer responding?	The problem is solved.	Go to step 2.
<b>Step 2</b> Check if the electrical outlet is turned off by a switch or breaker.  Is the electrical outlet turned off by a switch or breaker?	Turn on the switch or reset the breaker.	Go to step 3.
<b>Step 3</b> Check if the printer is on.  Is the printer on?	Go to step 4.	Turn on the printer.
<b>Step 4</b> Check if the printer is in Sleep or Hibernate mode.  Is the printer in Sleep or Hibernate mode?	Press the power button to wake the printer.	Go to step 5.



Action	Yes	No
<b>Step 5</b> Check if the cables connecting the printer and the computer are inserted to the correct ports.  Are the cables inserted to the correct ports?	Go to step 6.	Insert the cables to the correct ports.
<b>Step 6</b> Install the correct print driver.  Is the printer responding?	The problem is solved.	Go to step 7.
<b>Step 7</b> Turn off the printer, wait for about 10 seconds, and then turn on the printer.  Is the printer responding?	The problem is solved.	Contact your <a href="#">dealer</a> .

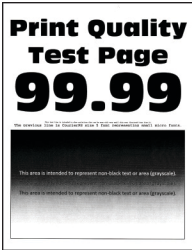
# Print quality is poor

## Blank or white pages



Contact your [dealer](#).

## Dark print

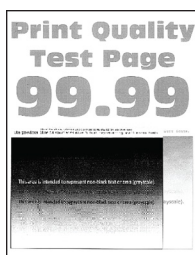


**Note:** Before solving the problem, print the quality sample pages to determine the missing color. From the home screen, touch **Settings > Troubleshooting > Print Quality Test Pages**.

Action	Yes	No
<b>Step 1</b> <b>a</b> Perform Color Adjust. From the home screen, touch <b>Settings &gt; Print &gt; Quality &gt; Advanced Imaging &gt; Color Adjust</b> . <b>b</b> Print the document.  Is the print too dark?	Go to step 2.	The problem is solved.
<b>Step 2</b> <b>a</b> Depending on your operating system, reduce the toner darkness from the Printing Preferences or Print dialog. <b>Note:</b> You can also change the setting on the printer control panel. From the home screen, touch <b>Settings &gt; Print &gt; Quality &gt; Toner Darkness</b> . <b>b</b> Print the document.  Is the print too dark?	Go to step 3.	The problem is solved.
<b>Step 3</b> <b>a</b> Depending on your operating system, specify the paper type from the Printing Preferences or Print dialog. <b>Notes:</b> <ul style="list-style-type: none"> <li>Make sure that the setting matches the paper loaded in the tray.</li> <li>You can also change the setting on the printer control panel. From the home screen, touch <b>Settings &gt; Paper &gt; Tray Configuration &gt; Paper Size/Type</b>.</li> </ul> <b>b</b> Print the document.  Is the print too dark?	Go to step 4.	The problem is solved.
<b>Step 4</b> Make sure that the paper has no texture or rough finishes.  Are you printing on textured or rough paper?	Go to step 5.	Go to step 6.
<b>Step 5</b> <b>a</b> Replace textured or rough paper with plain paper. <b>b</b> Print the document.  Is the print too dark?	Go to step 6.	The problem is solved.

Action	Yes	No
<b>Step 6</b> <b>a</b> Load paper from a fresh package. <b>Note:</b> Paper absorbs moisture due to high humidity. Store paper in its original wrapper until you are ready to use it. <b>b</b> Print the document.  Is the print too dark?	Contact your <a href="#">dealer</a> .	The problem is solved.

## Ghost images

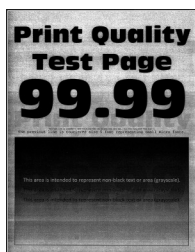


**Note:** Before solving the problem, print the Print Quality Test Pages. From the home screen, touch **Settings** > **Troubleshooting** > **Print Quality Test Pages**.

Action	Yes	No
<b>Step 1</b> <b>a</b> Load the tray with the correct paper type and weight. <b>b</b> Print the document.  Do ghost images appear on prints?	Go to step 2.	The problem is solved.
<b>Step 2</b> <b>a</b> Depending on your operating system, specify the paper type from the Printing Preferences or Print dialog. <b>Notes:</b> <ul style="list-style-type: none"> <li>Make sure that the setting matches the paper loaded in the tray.</li> <li>You can also change the setting on the printer control panel. From the home screen, touch <b>Settings</b> &gt; <b>Paper</b> &gt; <b>Tray Configuration</b> &gt; <b>Paper Size/Type</b>.</li> </ul> <b>b</b> Print the document.  Do ghost images appear on prints?	Go to step 3.	The problem is solved.

Action	Yes	No
<b>Step 3</b> <b>a</b> Perform Color Adjust. From the home screen, touch <b>Settings &gt; Print &gt; Quality &gt; Advanced Imaging &gt; Color Adjust.</b> <b>b</b> Print the document.  Do ghost images appear on prints?	Contact your <a href="#">dealer</a> .	The problem is solved.

## Gray or colored background



**Note:** Before solving the problem, print the Print Quality Test Pages. From the home screen, touch **Settings > Troubleshooting > Print Quality Test Pages**.

Action	Yes	No
<b>Step 1</b> <b>a</b> Depending on your operating system, increase toner darkness from the Printing Preferences or Print dialog. <b>Note:</b> You can also change the setting on the printer control panel. From the home screen, touch <b>Settings &gt; Print &gt; Quality &gt; Toner Darkness.</b> <b>b</b> Print the document.  Does gray or colored background appear on prints?	Go to step 2.	The problem is solved.
<b>Step 2</b> <b>a</b> Perform Color Adjust. From the home screen, touch <b>Settings &gt; Print &gt; Quality &gt; Advanced Imaging &gt; Color Adjust.</b> <b>b</b> Print the document.  Does gray or colored background appear on prints?	Contact your <a href="#">dealer</a> .	The problem is solved.

## Horizontal dark lines



### Notes:

- Before solving the problem, print the Print Quality Test Pages. From the home screen, touch **Settings** > **Troubleshooting** > **Print Quality Test Pages**.
- If horizontal dark lines keep appearing on the prints, then see the “Repeating defects” topic.

Action	Yes	No
<b>Step 1</b> <b>a</b> Depending on your operating system, specify the paper source from the Printing Preferences or Print dialog. <b>b</b> Print the document.  Do horizontal dark lines appear on prints?	Go to step 2.	The problem is solved.
<b>Step 2</b> <b>a</b> Depending on your operating system, specify the paper type from the Printing Preferences or from Print dialog.  <b>Notes:</b> <ul style="list-style-type: none"> <li>• Make sure that the setting matches the paper loaded in the tray.</li> <li>• You can also change the setting on the printer control panel. From the home screen, touch <b>Settings</b> &gt; <b>Paper</b> &gt; <b>Tray Configuration</b> &gt; <b>Paper Size/Type</b>.</li> </ul> <b>b</b> Print the document.  Do horizontal dark lines appear on prints?	Go to step 3.	The problem is solved.
<b>Step 3</b> <b>a</b> Load paper from a fresh package. <b>Note:</b> Paper absorbs moisture due to high humidity. Store paper in its original wrapper until you use it. <b>b</b> Print the document.  Do horizontal dark lines appear on prints?	Contact your <a href="#">dealer</a> .	The problem is solved.

Horizontal white lines



Notes:

- Before solving the problem, print the Print Quality Test Pages. From the home screen, touch **Settings** > **Troubleshooting** > **Print Quality Test Pages**.
- If horizontal white lines keep appearing on the prints, then see the “Repeating defects” topic.

Action	Yes	No
<p><b>Step 1</b></p> <p><b>a</b> Depending on your operating system, specify the paper type from the Printing Preferences or Print dialog.</p> <p><b>Notes:</b></p> <ul style="list-style-type: none"><li>• Make sure that the setting matches the paper loaded in the tray.</li><li>• You can also change the setting on the printer control panel. From the home screen, touch <b>Settings</b> &gt; <b>Paper</b> &gt; <b>Tray Configuration</b> &gt; <b>Paper Size/Type</b>.</li></ul> <p><b>b</b> Print the document.</p> <p>Do horizontal white lines appear on prints?</p>	<p>Go to step 2.</p>	<p>The problem is solved.</p>
<p><b>Step 2</b></p> <p><b>a</b> Load the specified paper source with the recommended paper type.</p> <p><b>b</b> Print the document.</p> <p>Do horizontal white lines appear on prints?</p>	<p>Contact your <a href="#">dealer</a>.</p>	<p>The problem is solved.</p>

Incorrect margins

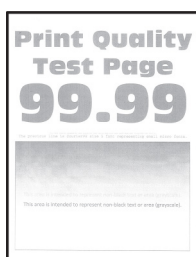


**Note:** Before solving the problem, print the Print Quality Test Pages. From the control panel, navigate to

**Settings > Troubleshooting > Print Quality Test Pages.** For non-touch-screen printer models, press  to navigate through the settings.

Action	Yes	No
<b>Step 1</b> <b>a</b> Adjust the paper guides to the correct position for the paper loaded. <b>b</b> Print the document.  Are the margins correct?	The problem is solved.	Go to step 2.
<b>Step 2</b> <b>a</b> Depending on your operating system, specify the paper size from the Printing Preferences or Print dialog.  <b>Notes:</b> <ul style="list-style-type: none"> <li>• Make sure that the setting matches the paper loaded.</li> <li>• You can also change the setting from the printer control panel. Navigate to <b>Settings &gt; Paper &gt; Tray Configuration &gt; Paper Size/Type.</b></li> </ul> <b>b</b> Print the document.  Are the margins correct?	The problem is solved.	Contact your <a href="#">dealer</a> .

## Light print



**Note:** Before solving the problem, print the Print Quality Test Pages. From the control panel, navigate to **Settings > Troubleshooting > Print Quality Test Pages.**

Action	Yes	No
<b>Step 1</b> <b>a</b> Perform Color Adjust. From the home screen, touch <b>Settings &gt; Print &gt; Quality &gt; Advanced Imaging &gt; Color Adjust.</b> <b>b</b> Print the document. S  Is the print too light?	Go to step 2.	The problem is solved.

Action	Yes	No
<p><b>Step 2</b></p> <p><b>a</b> Depending on your operating system, increase the toner darkness from the Printing Preferences or Print dialog.</p> <p><b>Note:</b> You can also change the setting on the printer control panel. From the home screen, touch <b>Settings &gt; Print &gt; Quality &gt; Toner Darkness</b>.</p> <p><b>b</b> Print the document.</p> <p>Is the print too light?</p>	Go to step 3.	The problem is solved.
<p><b>Step 3</b></p> <p><b>a</b> Depending on your operating system, specify the paper type from the Printing Preferences or Print dialog.</p> <p><b>Notes:</b></p> <ul style="list-style-type: none"> <li>• Make sure that the setting matches the paper loaded in the tray.</li> <li>• You can also change the setting on the printer control panel. From the home screen, touch <b>Settings &gt; Paper &gt; Tray Configuration &gt; Paper Size/Type</b>.</li> </ul> <p><b>b</b> Print the document.</p> <p>Is the print too light?</p>	Go to step 4.	The problem is solved.
<p><b>Step 4</b></p> <p>Make sure that the paper has no texture or rough finishes.</p> <p>Are you printing on textured or rough paper?</p>	Go to step 5.	Go to step 6.
<p><b>Step 5</b></p> <p><b>a</b> Replace textured or rough paper with plain paper.</p> <p><b>b</b> Print the document.</p> <p>Is the print too dark?</p>	Go to step 6.	The problem is solved.
<p><b>Step 6</b></p> <p><b>a</b> Load paper from a fresh package.</p> <p><b>Note:</b> Paper absorbs moisture due to high humidity. Store paper in its original wrapper until you are ready to use it.</p> <p><b>b</b> Print the document.</p> <p>Is the print too light?</p>	Contact your <a href="#">dealer</a> .	The problem is solved.



# Mottled print and dots



**Note:** Before solving the problem, print the Print Quality Test Pages. From the home screen, touch **Settings** > **Troubleshooting** > **Print Quality Test Pages**.

Action	Yes	No
<b>Step 1</b> Check the printer for leaked toner contamination.  Is the printer free of leaked toner?	Go to step 2.	Contact your <a href="#">dealer</a> .
<b>Step 2</b> <b>a</b> Depending on your operating system, specify the paper type and size from the Printing Preferences or Print dialog.  <b>Notes:</b> <ul style="list-style-type: none"> <li>Make sure that the settings match the paper loaded.</li> <li>You can also change the settings on the printer control panel. From the home screen, touch <b>Settings</b> &gt; <b>Paper</b> &gt; <b>Tray Configuration</b> &gt; <b>Paper Size/Type</b>.</li> </ul> <b>b</b> Print the document.  Is the print mottled?	Go to step 3.	The problem is solved.
<b>Step 3</b> <b>a</b> Replace the textured or rough paper loaded in the tray with plain paper. <b>b</b> Print the document.  Is the print mottled?	Contact your <a href="#">dealer</a> .	The problem is solved.

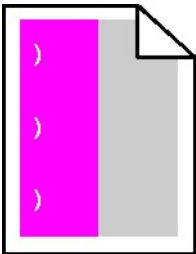
# Print crooked or skewed



**Note:** Before solving the problem, print the Print Quality Test Pages. From the home screen, touch **Settings** > **Troubleshooting** > **Print Quality Test Pages**.

Action	Yes	No
<p><b>Step 1</b></p> <ul style="list-style-type: none"> <li><b>a</b> Pull out the tray.</li> <li><b>b</b> Remove the paper, and then load paper from a fresh package.</li> </ul> <p><b>Note:</b> Paper absorbs moisture due to high humidity. Store paper in its original wrapper until you are ready to use it.</p> <ul style="list-style-type: none"> <li><b>c</b> Squeeze and slide the paper guides to the correct position for the size of the paper you are loading.</li> <li><b>d</b> Insert the tray.</li> <li><b>e</b> Print the document.</li> </ul> <p>Is the print crooked or skewed?</p>	Go to step 2.	The problem is solved.
<p><b>Step 2</b></p> <ul style="list-style-type: none"> <li><b>a</b> Check if you are printing on a supported paper.</li> <li><b>b</b> Print the document.</li> </ul> <p>Is the print crooked or skewed?</p>	Contact your <a href="#">dealer</a> .	The problem is solved.

### Repeating defects



Contact your [dealer](#).

### Solid color or black images



Contact your [dealer](#).

# Text or images cut off



**Note:** Before solving the problem, print the Print Quality Test Pages. From the home screen, touch **Settings** > **Troubleshooting** > **Print Quality Test Pages**.

Action	Yes	No
<p><b>Step 1</b></p> <p><b>a</b> Move the paper guides in the tray to the correct position for the paper loaded.</p> <p><b>b</b> Print the document.</p> <p>Is the page or image clipped?</p>	Go to step 2.	The problem is solved.
<p><b>Step 2</b></p> <p><b>a</b> Depending on your operating system, specify the paper size from the Printing Preferences or Print dialog.</p> <p><b>Notes:</b></p> <ul style="list-style-type: none"> <li>Make sure that the setting matches the paper loaded in the tray.</li> <li>You can also change the setting on the printer control panel. From the home screen, touch <b>Settings</b> &gt; <b>Paper</b> &gt; <b>Tray Configuration</b> &gt; <b>Paper Size/Type</b>.</li> </ul> <p><b>b</b> Print the document.</p> <p>Is the page or image clipped?</p>	Contact your <a href="#">dealer</a> .	The problem is solved.

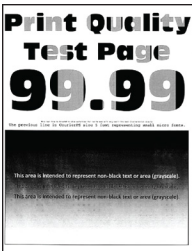
# Toner easily rubs off



**Note:** Before solving the problem, print the Print Quality Test Pages. From the home screen, touch **Settings** > **Troubleshooting** > **Print Quality Test Pages**.

Action	Yes	No
<p><b>1</b> Depending on your operating system, specify the paper type from the Printing Preferences or Print dialog.</p> <p><b>Notes:</b></p> <ul style="list-style-type: none"><li>• Make sure that the setting matches the paper loaded.</li><li>• You can also change the setting on the printer control panel. From the home screen, touch <b>Settings &gt; Paper &gt; Tray Configuration &gt; Paper Size/Type</b>.</li></ul> <p><b>2</b> Print the document.</p> <p>Does the toner rub off?</p>	Contact your <a href="#">dealer</a> .	The problem is solved.

Uneven print density



Contact your [dealer](#).

Vertical dark lines



**Note:** Before solving the problem, print the Print Quality Test Pages. From the home screen, touch **Settings > Troubleshooting > Print Quality Test Pages**.

Action	Yes	No
<p><b>Step 1</b></p> <p><b>a</b> Depending on your operating system, specify the paper type from the Printing Preferences or Print dialog.</p> <p><b>Notes:</b></p> <ul style="list-style-type: none"> <li>• Make sure that the setting matches the paper loaded in the tray.</li> <li>• You can also change the setting on the printer control panel. From the home screen, touch <b>Settings &gt; Paper &gt; Tray Configuration &gt; Paper Size/Type</b>.</li> </ul> <p><b>b</b> Print the document.</p> <p>Do vertical dark lines or streaks appear on prints?</p>	Go to step 2.	The problem is solved.
<p><b>Step 2</b></p> <p><b>a</b> Load paper from a fresh package.</p> <p><b>Note:</b> Paper absorbs moisture due to high humidity. Store paper in its original wrapper until you use it.</p> <p><b>b</b> Print the document.</p> <p>Do vertical dark lines or streaks appear on prints?</p>	Contact your <a href="#">dealer</a> .	The problem is solved.

## Vertical white lines



**Note:** Before solving the problem, print the Print Quality Test Pages. From the home screen, touch **Settings > Troubleshooting > Print Quality Test Pages**.

Action	Yes	No
<p><b>Step 1</b></p> <p><b>a</b> Depending on your operating system, specify the paper type from the Printing Preferences or Print dialog.</p> <p><b>Notes:</b></p> <ul style="list-style-type: none"> <li>• Make sure that the setting matches the paper loaded in the tray.</li> <li>• You can also change the setting on the printer control panel. From the home screen, touch <b>Settings &gt; Paper &gt; Tray Configuration &gt; Paper Size/Type</b>.</li> </ul> <p><b>b</b> Print the document.</p> <p>Do vertical white lines appear on prints?</p>	Go to step 2.	The problem is solved.
<p><b>Step 2</b></p> <p>Check if you are using the recommended paper type.</p> <p><b>a</b> Load the specified paper source with the recommended paper type.</p> <p><b>b</b> Print the document.</p> <p>Do vertical white lines still appear on prints?</p>	Contact your <a href="#">dealer</a> .	The problem is solved.

## Color quality problems

### Adjusting toner darkness

- 1 From the home screen, touch **Settings > Print > Quality**.
- 2 Adjust the toner darkness.
- 3 Apply the changes.

### Modifying the colors in printed output

- 1 From the home screen, touch **Settings > Print > Quality > Advanced Imaging > Color Correction**.
- 2 In the Color Correction menu, touch **Manual > Color Correction Content**.
- 3 Choose the appropriate color conversion setting.

Object type	Color conversion tables
RGB Image RGB Text RGB Graphics	<ul style="list-style-type: none"> <li>• Vivid—Produces brighter, more saturated colors and may be applied to all incoming color formats.</li> <li>• sRGB Display—Produces an output that approximates the colors shown on a computer monitor. Black toner usage is optimized for printing photographs.</li> <li>• Display-True Black—Produces an output that approximates the colors shown on a computer monitor. This setting uses only black toner to create all levels of neutral gray.</li> <li>• sRGB Vivid—Provides an increased color saturation for the sRGB Display color correction. Black toner usage is optimized for printing business graphics.</li> <li>• Off</li> </ul>
CMYK Image CMYK Text CMYK Graphics	<ul style="list-style-type: none"> <li>• US CMYK—Applies color correction to approximate the Specifications for Web Offset Publishing (SWOP) color output.</li> <li>• Euro CMYK—Applies color correction to approximate Euroscale color output.</li> <li>• Vivid CMYK—Increases the color saturation of the US CMYK color correction setting.</li> <li>• Off</li> </ul>

## FAQ about color printing

### What is RGB color?

RGB color is a method of describing colors by indicating the amount of red, green, or blue used to produce a certain color. Red, green, and blue light can be added in various amounts to produce a large range of colors observed in nature. Computer screens, scanners, and digital cameras use this method to display colors.

### What is CMYK color?

CMYK color is a method of describing colors by indicating the amount of cyan, magenta, yellow, and black used to reproduce a particular color. Cyan, magenta, yellow, and black inks or toners can be printed in various amounts to produce a large range of colors observed in nature. Printing presses, inkjet printers, and color laser printers create colors in this manner.

### How is color specified in a document to be printed?

Software programs are used to specify and modify the document color using RGB or CMYK color combinations. For more information, see the software program Help topics.

### How does the printer know what color to print?

When printing a document, information describing the type and color of each object is sent to the printer and is passed through color conversion tables. Color is translated into the appropriate amounts of cyan, magenta, yellow, and black toner used to produce the color you want. The object information determines the application of color conversion tables. For example, it is possible to apply one type of color conversion table to text while applying a different color conversion table to photographic images.

### What is manual color correction?

When manual color correction is enabled, the printer employs user-selected color conversion tables to process objects. Manual color correction settings are specific to the type of object being printed (text, graphics, or images). It is also specific to how the color of the object is specified in the software program (RGB or CMYK combinations). To apply a different color conversion table manually, see [“Modifying the colors in printed output” on page 130](#).

If the software program does not specify colors with RGB or CMYK combinations, then manual color correction is not useful. It is also not effective if the software program or the computer operating system controls the adjustment of colors. In most situations, setting the Color Correction to Auto generates preferred colors for the documents.

### How can I match a particular color (such as a corporate logo)?

From the printer Quality menu, nine types of Color Samples sets are available. These sets are also available from the Color Samples page of the Embedded Web Server. Selecting any sample set generates multiple-page prints consisting of hundreds of colored boxes. Each box contains a CMYK or RGB combination, depending on the table selected. The observed color of each box is obtained by passing the CMYK or RGB combination labeled on the box through the selected color conversion table.

By examining Color Samples sets, you can identify the box with color closest to the color being matched. The color combination labeled on the box can then be used for modifying the color of the object in a software program. For more information, see the software program Help topics. Manual color correction may be necessary to use the selected color conversion table for the particular object.

Selecting which Color Samples set to use for a particular color-matching problem depends on:

- The Color Correction setting being used (Auto, Off, or Manual)
- The type of object being printed (text, graphics, or images)
- How the color of the object is specified in the software program (RGB or CMYK combinations)

If the software program does not specify colors with RGB or CMYK combinations, then the Color Samples pages are not useful. Additionally, some software programs adjust the RGB or CMYK combinations specified in the program through color management. In these situations, the printed color may not be an exact match of the Color Samples pages.

### The print appears tinted

Action	Yes	No
<p><b>Step 1</b></p> <p><b>a</b> Perform Color Adjust. From the home screen, touch <b>Settings &gt; Print &gt; Quality &gt; Advanced Imaging &gt; Color Adjust</b>.</p> <p><b>b</b> Print the document.</p> <p>Does the print appear tinted?</p>	Go to step 2.	The problem is solved.



Action	Yes	No
<b>Step 2</b> <b>a</b> From the home screen, touch <b>Settings &gt; Print &gt; Quality &gt; Advanced Imaging &gt; Color Balance</b> . <b>b</b> Adjust the settings. <b>c</b> Print the document.  Does the print appear tinted?	Contact your <a href="#">dealer</a> .	The problem is solved.

## Contacting your dealer

Before contacting your dealer, make sure to have the following information:

- Printer problem
- Error message
- Printer model type and serial number

Visit the place where you purchased your printer.

# Notices

## Product information

Product name:

DIGITAL FULL COLOR PRINTER

MX-C607P

Machine type:

5063

Model(s):

539

## Edition notice

May 2020

**The following paragraph does not apply to any country where such provisions are inconsistent with local law:** THIS PUBLICATION IS PROVIDED "AS IS" WITHOUT WARRANTY OF ANY KIND, EITHER EXPRESS OR IMPLIED, INCLUDING, BUT NOT LIMITED TO, THE IMPLIED WARRANTIES OF MERCHANTABILITY OR FITNESS FOR A PARTICULAR PURPOSE. Some states do not allow disclaimer of express or implied warranties in certain transactions; therefore, this statement may not apply to you.

This publication could include technical inaccuracies or typographical errors. Changes are periodically made to the information herein; these changes will be incorporated in later editions. Improvements or changes in the products or the programs described may be made at any time.


## GOVERNMENT END USERS

The Software Program and any related documentation are "Commercial Items," as that term is defined in 48 C.F.R. 2.101, "Computer Software" and "Commercial Computer Software Documentation," as such terms are used in 48 C.F.R. 12.212 or 48 C.F.R. 227.7202, as applicable. Consistent with 48 C.F.R. 12.212 or 48 C.F.R. 227.7202-1 through 227.7207-4, as applicable, the Commercial Computer Software and Commercial Software Documentation are licensed to the U.S. Government end users (a) only as Commercial Items and (b) with only those rights as are granted to all other end users pursuant to the terms and conditions herein.


## Supplies

Standard supplies for this product that can be replaced by the user include toner cartridges.

Be sure to use only SHARP-specified products for the toner cartridges.

 <p>GENUINE SUPPLIES</p>	<p>For best copying results, be sure to use only Sharp Genuine Supplies which are designed, engineered, and tested to maximize the life and performance of Sharp products. Look for the Genuine Supplies label on the toner package.</p>
---	--

**Hot surface notice**

	<p>此符號表示該表面或元件會發熱。 請當心：為避免被發熱表面或元件燙傷的危險，請先讓該表面或元件冷卻之後再觸摸。</p>
---	---

**Hinweis zum GS-Zeichen**

Modell	539
Gerätetyp	5063

**Noise emission levels**

The following measurements were made in accordance with ISO 7779 and reported in conformance with ISO 9296.

**Note:** Some modes may not apply to your product.

1-meter average sound pressure, dBA	
Printing	One-sided: 56 Two-sided: 57
Ready	14

**Waste from Electrical and Electronic Equipment (WEEE) directive**



The WEEE logo signifies specific recycling programs and procedures for electronic products in countries of the European Union. We encourage the recycling of our products. If you have further questions about recycling options, contact your local sales office.

## India E-Waste notice



This product complies with the India E-Waste (Management and Handling) Rules, 2011, which prohibit use of lead, mercury, hexavalent chromium, polybrominated biphenyls, or polybrominated diphenyl ethers in concentrations exceeding 0.1% by weight and 0.01% by weight for cadmium, except for the exemption set in Schedule II of the Rules.

## Product disposal

Do not dispose of the printer or supplies in the same manner as normal household waste. Consult your local authorities for disposal and recycling options.

## Taiwan waste dry cell batteries recycle logo notice

According to Article 15 of the Waste Disposal Act in the announcement of Taiwan EPA, the producing or the importing manufacturer is responsible for recycling, clearance, and disposal of dry cell batteries, batteries packaged with products and sold, given, and promoted with products to consumers may be labeled with the recycling mark with the remark "please recycle waste batteries" on the product package, the label, or the product manual. Enclosed please find the waste dry cell batteries recycle logo with the remark. Please give the waste dry cell batteries to a company who has the waste dry cell batteries recycle logo and provides the recycle service in order to have the appropriate process for the waste dry cell batteries.



## BSMI battery notice

**警告**  
如果更換不正確之電池型式會有爆炸的風險  
請依製造商說明書處理用過之電池

## Taiwan RoHS information 限用物質含有情況標示

適用於印表機、雷射印表機、多功能複合機或多功能印表機。

Applies to Printer, Laser Printer, Multifunction Machine, or Multifunction Printer.

型號（型式）：請參閱「注意事項」章節或「控管資訊」章節。

Type designation (Type): Please see the “Notices” section or the “Regulatory information” section.

單元	限用物質及其化學符號					
	鉛 (Pb)	汞 (Hg)	鎘 (Cd)	六價鉻 (Cr <sup>+6</sup> )	多溴聯苯 (PBB)	多溴二苯醚 (PBDE)
電路板	—	○	○	○	○	○
電源供應器	—	○	○	○	○	○
電源線	—	○	○	○	○	○
連接器	—	○	○	○	○	○
機械組件—軸、滾軸	—	○	○	○	○	○
機械組件—馬達	—	○	○	○	○	○
機械組件—其他	—	○	○	○	○	○
液晶/LED 顯示面板	—	○	○	○	○	○
備考 1. “○” 係指該項限用物質之百分比含量未超出百分比含量基準值。 備考 2. “—” 係指該項限用物質為排除項目。						

## Static sensitivity notice



This symbol identifies static-sensitive parts. Do not touch the areas near these symbols without first touching a metal surface in an area away from the symbol.

To prevent damage from electrostatic discharge when performing maintenance tasks such as clearing paper jams or replacing supplies, touch any exposed metal frame of the printer before accessing or touching interior areas of the printer even if the symbol is not present.

# ENERGY STAR



Products that have earned the ENERGY STAR® are designed to protect the environment through superior energy efficiency.

The products that meet the ENERGY STAR® guidelines carry the ENERGY STAR® logo.

The products without the logo may not meet the ENERGY STAR® guidelines.

# Temperature information

Operating temperature and relative humidity	10 to 32.2°C (50 to 90°F) and 15 to 80% RH
Printer / cartridge / imaging unit long-term storage <sup>1</sup>	15.3 to 32.2°C (60 to 90°F) and 8 to 15% RH Maximum wet bulb temperature: 22.8°C (73°F)
Printer / cartridge / imaging unit short-term shipping	-10 to 40°C (14 to 104°F)
<sup>1</sup> Supplies shelf life is approximately 2 years. This is based on storage in a standard office environment at 22°C (72°F) and 45% humidity. <sup>2</sup> Wet-bulb temperature is determined by the air temperature and the relative humidity.	

# Información de la energía de México

Consumo de energía en operación:

800 Wh

Consumo de energía en modo de espera:

0.2 Wh

Cantidad de producto por unidad de energía consumida:

4.50 páginas / Wh

## Laser notice

The printer is certified in the U.S. to conform to the requirements of DHHS 21 CFR, Chapter I, Subchapter J for Class I (1) laser products, and elsewhere is certified as a Class I laser product conforming to the requirements of IEC 60825-1: 2014.

Class I laser products are not considered to be hazardous. The laser system and printer are designed so there is never any human access to laser radiation above a Class I level during normal operation, user maintenance, or prescribed service conditions. The printer has a non-serviceable printhead assembly that contains a laser with the following specifications:

Class: IIIb (3b) AlGaAs

Nominal output power (milliwatts): 20

Wavelength (nanometers): 755–800

## Power consumption

### Product power consumption

The following table documents the power consumption characteristics of the product.

**Note:** Some modes may not apply to your product.

Mode	Description	Power consumption (Watts)
Printing	The product is generating hard-copy output from electronic inputs.	One-sided: 800 Two-sided: 765
Copy	The product is generating hard-copy output from hard-copy original documents.	N/A
Scan	The product is scanning hard-copy documents.	N/A
Ready	The product is waiting for a print job.	Higher power usage: 53.2 Lower power usage: 45.4
Sleep Mode	The product is in a high-level energy-saving mode.	1.34
Hibernate	The product is in a low-level energy-saving mode.	0.3
Off	The product is plugged into an electrical outlet, but the power switch is turned off.	0.2

The power consumption levels listed in the previous table represent time-averaged measurements. Instantaneous power draws may be substantially higher than the average.

### Sleep Mode

This product is designed with an energy-saving mode called *Sleep Mode*. The Sleep Mode saves energy by lowering power consumption during extended periods of inactivity. The Sleep Mode is automatically engaged after this product is not used for a specified period of time, called the *Sleep Mode Timeout*.

Factory default Sleep Mode Timeout for this product (in minutes):	1
---	---

By using the configuration menus, the Sleep Mode Timeout can be modified between 1 minute and 120 minutes. If the print speed is less than or equal to 30 pages per minute, then you can set the timeout only up to 60 minutes. Setting the Sleep Mode Timeout to a low value reduces energy consumption, but may increase the response time of the product. Setting the Sleep Mode Timeout to a high value maintains a fast response, but uses more energy.

### **Hibernate Mode**

This product is designed with an ultra-low power operating mode called *Hibernate mode*. When operating in Hibernate Mode, all other systems and devices are powered down safely.

The Hibernate mode can be entered in any of the following methods:

- Using the Hibernate Timeout
- Using the Schedule Power modes

Factory default Hibernate Timeout for this product in all countries or regions	3 days
--	--------

The amount of time the printer waits after a job is printed before it enters Hibernate mode can be modified between one hour and one month.

### **Off mode**

If this product has an off mode which still consumes a small amount of power, then to completely stop product power consumption, disconnect the power supply cord from the electrical outlet.

### **Total energy usage**

It is sometimes helpful to estimate the total product energy usage. Since power consumption claims are provided in power units of Watts, the power consumption should be multiplied by the time the product spends in each mode in order to calculate energy usage. The total product energy usage is the sum of each mode's energy usage.

## **Environmental information**

**Please read this part carefully. It will help you to reduce your impact on the environment and help you to reduce your costs at the same time.**

### **Saving paper**

- 1 The automated duplex printing function is for printing both sides of paper automatically without turning over the paper manually. If the machine is equipped with the automated duplex printing function, set up your print settings on your computer to automatically print double-sided. Please use the automatic duplex printing function of this machine wherever possible.
- 2 By printing on recycled paper and thin 64 g/m<sup>2</sup> paper that meet the standard EN12281:2002 and similar quality standards, you can reduce the impact on the environment.

### **Saving energy**

The ENERGY STAR® program is a voluntary scheme to promote the development and purchase of energy efficient models, which help to minimize environmental impact. Products which meet the stringent requirements



of the ENERGY STAR program for both environmental benefits and the amount of energy consumption may carry the ENERGY STAR logo in case they have been registered with an ENERGY STAR program.

## Information for China RoHS program

Part name	Toxic and hazardous substances or elements					
	Lead (Pb)	Mercury (Hg)	Cadmium (Cd)	Hexavalent Chromium (Cr VI)	Polybrominated biphenyl (PBB)	Polybrominated diphenylether (PBDE)
Circuit boards	X	O	O	O	O	O
Power supply	X	O	O	O	O	O
Power cords	X	O	O	O	O	O
Connectors	X	O	O	O	O	O
Mechanical assemblies—shafts, rollers	X	O	O	O	O	O
Mechanical assemblies—motors	X	O	O	O	O	O
Mechanical assemblies—other	X	O	O	O	O	O
Scanner assembly, for multifunction device only	X	O	O	O	O	O
LCD/LED display	X	O	O	O	O	O

This table is based on SJ/T 11364 regulations.

O: Indicates that the content of the toxic and hazardous substance in all the homogenous materials of the part is below the concentration limit requirement as described in GB/T 26572.

X: Indicates that the content of the toxic and hazardous substance in at least one homogenous material of the part exceeds the concentration limit requirement as described in GB/T 26572.

This product is compliant with the China RoHS Directive concerning the restriction of use of certain hazardous substances.



The Environmentally Friendly Use Period (EFUP) for all enclosed products and their components are per the symbol shown here, unless otherwise marked. Certain components may have a different EFUP and so are marked to reflect such. The Environmentally Friendly Use Period is valid only when the product is operated under the conditions defined in the product manual.

## Federal Communications Commission (FCC) compliance information statement

This product has been tested and found to comply with the limits for a Class A digital device, pursuant to Part 15 of the FCC Rules. Operation is subject to the following two conditions: (1) this device may not cause harmful interference, and (2) this device must accept any interference received, including interference that may cause undesired operation.

The FCC Class A limits are designed to provide reasonable protection against harmful interference when the equipment is operated in a commercial environment. This equipment generates, uses, and can radiate radio frequency energy and, if not installed and used in accordance with the instruction manual, may cause harmful interference to radio communications. Operation of this equipment in a residential area is likely to cause harmful interference, in which case the user will be required to correct the interference at his own expense.

The manufacturer is not responsible for any radio or television interference caused by using other than recommended cables or by unauthorized changes or modifications to this equipment. Unauthorized changes or modifications could void the user's authority to operate this equipment.

**Note:** To assure compliance with FCC regulations on electromagnetic interference for a Class A computing device, use a properly shielded and grounded cable such as Lexmark part number 1021231 for parallel attach or 1021294 for USB attach. Use of a substitute cable not properly shielded and grounded may result in a violation of FCC regulations.

Any questions regarding this compliance information statement should be directed to:

Director of Lexmark Technology & Services  
Lexmark International, Inc.  
740 West New Circle Road  
Lexington, KY 40550  
Telephone: (859) 232-2000  
E-mail: [regulatory@lexmark.com](mailto:regulatory@lexmark.com)

## BSMI EMC notice

Warning to user:

This is a Class A ITE. In a residential area, this product may cause radio interference, in which case the user may be required to take adequate measures.

## Industry Canada compliance statement

This Class A digital apparatus meets all requirements of the Canadian Interference-Causing Equipment Standard ICES-003.

## Avis de conformité aux normes de l'industrie du Canada

Cet appareil numérique de classe A est conforme aux exigences de la norme canadienne relative aux équipements pouvant causer des interférences NMB-003.

## CCC EMC notice

**警告**  
此為A級產品。在生活環境中，該產品可能會造成無線電干擾。在這種情況下，可能需要用戶對干擾採取切實可行的措施。

## Japanese VCCI notice

製品にこのラベルが表示されている場合、  
次の要件を満たしています。

この装置は、クラス A 情報技術装置です。この装置を家庭環境で使用する  
と電波妨害を引き起こすことがあります。この場合には使用者が適切な対策  
を講ずるよう要求されることがあります。 VCCI-A

この装置は、クラスA情報技術装置です。この装置を家庭環境で使用す  
ると電波妨害を引き起こすことがあります。この場合には使用者が適切な  
対策を講ずるよう要求されることがあります。 VCCI-A

## Korean KC statement

제품에 이 기호가 있는 경우 다음 문구가 적용됩니다.

**A급 기기 (업무용 정보통신기기)**



이 기기는 업무용으로 전자파적합등록을 한 기기이오니  
판매자 또는 사용자는 이 점을 주의하시기 바라며,  
만약 잘못 판매 또는 구입하였을 때에는 가정용으로  
교환하시기 바랍니다.

## Notice to users of Class A products in Brazil

Este produto não é apropriado para uso em ambientes domésticos, pois poderá causar interferências eletromagnéticas que obrigam o usuário a tomar medidas necessárias para minimizar estas interferências.

## European Community (EC) directives conformity

This product is in conformity with the protection requirements of EC Council directives 2014/30/EU, 2014/35/EU, and 2011/65/EU on the approximation and harmonization of the laws of the Member States relating to electromagnetic compatibility, safety of electrical equipment designed for use within certain voltage limits, and on the restrictions of use of certain hazardous substances in electrical and electronic equipment.

A declaration of conformity to the requirements of the Directives is available upon request from Lexmark International Technology Hungária Kft., 8 Lechner Ödön fasor, Millennium Tower III, 1095 Budapest HUNGARY.

This product satisfies the Class A limits of EN 55022 and EN55032 and safety requirements of EN 60950-1 or EN 62368-1.

## **Radio interference notice**

### **Warning**

This is a product that complies with the emission requirements of EN55022 and EN55032 Class A limits and immunity requirements of EN55024. This product is not intended to be used in residential/domestic environments.

This is a Class A product. In a domestic environment, this product may cause radio interference, in which case the user may be required to take adequate measures.

# Index

## A

- adding contacts 15
- adding groups 16
- adjusting default volume speaker 80
- adjusting the brightness printer display 91
- adjusting the brightness of the printer display 91
- adjusting toner darkness 130
- AirPrint
  - using 29
- Android device
  - printing from 29
- attaching cables 10
- avoiding paper jams 92

## B

- bookmarks
  - creating 14
  - creating folders for 15

## C

- canceling a print job
  - from the computer 34
  - from the printer control panel 34
- cannot open Embedded Web Server 105
- card stock
  - loading 20
- checking the printer connectivity 107
- checking the status of parts and supplies 82
- cleaning
  - exterior of the printer 82
  - interior of the printer 82
- cleaning the printer 82
- collated printing does not work 109
- color correction 130
- confidential print jobs 32
  - printing 33
- configuring Eco-Mode setting 14
- configuring Eco-Settings 14

- configuring supply notifications 83
- configuring the SMTP server 105
- connecting the mobile device to the printer wireless network 81
- connecting the printer to a wireless network 80
- connecting to a wireless network
  - using PIN method 80
  - using Push Button method 80
- conserving supplies 91
- contacting your dealer 133
- contacts
  - adding 15
  - deleting 16
  - editing 16
- control panel
  - using 11
- creating bookmarks 14
- creating folders
  - for bookmarks 15
- crooked print 125

## D

- dark print 117
- deactivating the Wi-Fi network 81
- dealer
  - contacting 133
- default speaker volume
  - adjusting 80
- Defective flash detected 107
- deleting contacts 16
- deleting groups 16
- directory list
  - printing 33
- documents, printing
  - from a computer 29

## E

- Eco-Settings
  - configuring 14
- editing contacts 16
- editing groups 16
- emission notices 135, 142, 143
- enabling the USB port 107
- enabling Wi-Fi Direct 81

- encrypting
  - printer hard disk 78
- envelope seals when printing 108
- envelopes
  - loading 20
- environmental settings 90
- erasing
  - printer memory 77
- erasing hard disk memory 78
- erasing printer memory 78
- e-mail server
  - setting up 105

## F

- factory default settings
  - restoring 78
- FAQ about color printing 131
- flash drive
  - printing from 31
- font sample list
  - printing 33
- forms
  - printing 29
- Forms and Favorites
  - setting up 14

## G

- ghost images appear on prints 119
- Google Cloud Print
  - using 29
- gray or colored background 120
- groups
  - adding 16
  - deleting 16
  - editing 16

## H

- hard disk memory
  - erasing 77
- held jobs 32
  - printing 33
- Hibernate mode
  - configuring 90
- home screen
  - customizing 14

- using 12
- home screen icons
  - displaying 14
- horizontal dark lines 121
- horizontal white lines 122
- humidity around the printer 138

## I

- icons on the home screen
  - showing 14
- indicator light
  - printer status 11
- installing the printer software 13

## J

- jam locations
  - identifying 93
- jam, clearing
  - duplex unit 97
  - finisher bin 100
  - fuser 97
  - multipurpose feeder 95
  - standard bin 96
  - staple cartridge 102
  - trays 94
- jammed pages are not reprinted 112
- jams
  - avoiding 92
- job prints from the wrong tray 115
- job prints on the wrong paper 115

## L

- light print 123
- linking trays 21
- loading
  - card stock 20
  - envelopes 18
  - transparencies 20
  - trays 18
- loading envelopes
  - multipurpose feeder 20
- loading paper
  - multipurpose feeder 20
- locating jam areas 93
- locating the security slot 77

## M

- manual color correction 130

- menu
  - 802.1x 65
  - About this Printer 44
  - Accessibility 39
  - Confidential Print Setup 72
  - Configuration Menu 40
  - Device 75
  - Disk Encryption 73
  - Eco-Mode 37
  - Erase Temporary Data Files 74
  - Ethernet 60
  - Flash Drive Print 55
  - Google Cloud Print 67
  - Help 76
  - HTML 52
  - HTTP/FTP Settings 65
  - Image 52
  - IPSec 64
  - Job Accounting 48
  - Layout 44
  - Local Accounts 69
  - Login Restrictions 72
  - LPD Configuration 65
  - Manage Permissions 68
  - Media Types 55
  - Menu Settings Page 75
  - Miscellaneous 74
  - Network 75
  - Network Overview 57
  - Notifications 37
  - Out of Service Erase 43
  - PCL 51
  - PDF 50
  - PostScript 50
  - Power Management 39
  - Preferences 36
  - Print 75
  - Quality 47
  - Remote Operator Panel 37
  - Restore Factory Defaults 40
  - Restrict external network
    - access 67
  - Schedule USB Devices 69
  - Security Audit Log 70
  - Setup 46
  - SNMP 63
  - Solutions LDAP Settings 74
  - TCP/IP 61
  - Tray Configuration 53
  - Troubleshooting 76
  - Universal Setup 54
  - USB 66

- Visible Home Screen Icons 44
- Wi-Fi Direct 67
- XPS 49
- menu map 35
- Menu Settings Page
  - printing 13
- menus
  - Wireless 57
- mobile device
  - printing from 29, 30
  - modifying color output 130
- mottled print and dots 125
- moving the printer 8, 89
- multipurpose feeder
  - loading 20

## N

- noise emission levels 135
- nonvolatile memory
  - erasing 77
- Non-Printer Manufacturer supply 108
- non-volatile memory 78
- Not enough free space in flash memory for resources 107
- notices 135, 136, 139, 140, 142, 143

## O

- ordering
  - toner cartridges 83
- ordering supplies
  - waste toner bottle 83

## P

- paper
  - Universal size setting 18
- paper jam in door B 97
- paper jam in the finisher bin 100
- paper jam in the multipurpose feeder 95
- paper jam in the standard bin 96
- paper jam in trays 94
- paper jam, clearing
  - duplex unit 97
  - finisher bin 100
  - fuser 97
  - multipurpose feeder 95
  - standard bin 96
  - trays 94

- paper jams
  - avoiding 92
  - location 93
- paper size
  - setting 18
- paper sizes
  - supported 23
- paper type
  - setting 18
- paper types
  - supported 26
- parts status
  - checking 82
- personal identification number
  - method 80
- power button light
  - printer status 11
- power save modes
  - configuring 90
- print appears tinted 132
- print job
  - canceling from the computer 34
  - canceling from the printer control panel 34
- print jobs not printed 115
- Print Quality Test Pages 76
- print quality troubleshooting
  - blank pages 117
  - crooked print 125
  - dark print 117
  - ghost images appear on prints 119
  - gray or colored background 120
  - horizontal dark lines 121
  - horizontal white lines 122
  - light print 123
  - mottled print and dots 125
  - paper curl 109
  - print appears tinted 132
  - repeating print defects 126
  - skewed print 125
  - solid color or black images 126
  - text or images cut off 127
  - toner easily rubs off 127
  - uneven print density 128
  - vertical dark lines or streaks appear on prints 128
  - vertical white lines 129
  - white pages 117

- print troubleshooting
  - collated printing does not work 109
  - confidential and other held documents do not print 112
  - envelope seals when printing 108
  - incorrect margins 122
  - jammed pages are not reprinted 112
  - job prints from the wrong tray 115
  - job prints on the wrong paper 115
  - paper frequently jams 111
  - print jobs do not print 115
  - slow printing 113
  - tray linking does not work 110
  - unable to read flash drive 106
- printer
  - fully configured 9
  - minimum clearances 8
  - moving 8
  - selecting a location 8
  - shipping 90
- printer configurations 9
- printer display
  - adjusting the brightness 91
- printer hard disk
  - encrypting 78
- printer hard disk memory 78
- printer is not responding 116
- printer memory
  - erasing 77
- printer menus 35
- printer messages
  - Defective flash detected 107
  - Non-Printer Manufacturer supply 108
  - Not enough free space in flash memory for resources 107
  - Replace cartridge, printer region mismatch 108
  - Unformatted flash detected 107
- printer ports 10
- printer settings
  - restoring factory default 78
- printer software
  - installing 13
- printer wireless network
  - connecting the mobile device to 81

- printing
  - directory list 33
  - font sample list 33
  - from a computer 29
  - from a flash drive 31
  - from a mobile device 29, 30
  - from an Android device 29
  - Menu Settings Page 13
  - using Google Cloud Print 29
  - using Wi-Fi Direct 30
- printing a directory list 33
- printing a font sample list 33
- printing a network setup page 107
- printing confidential and other held jobs 33
- printing forms 29
- printing from a computer 29
- printing from a flash drive 31
- Push Button method 80

## R

- repeat print jobs 32
  - printing 33
- repeating print defects 126
- Replace cartridge, printer region mismatch 108
- replacing a toner cartridge 84
- replacing supplies
  - staple cartridge 86
  - staple cartridge holder 87
  - waste toner bottle 85
- replacing the staple cartridge holder in the staple finisher 87
- replacing the staple cartridge in the staple finisher 86
- replacing the waste toner bottle 85
- reserve print jobs
  - printing 33

## S

- safety information 5, 6, 7, 136
- scheduling power modes 14
- securing printer memory 78
- security slot
  - locating 77
- selecting a location for the printer 8
- serial printing
  - setting up 81

- setting the paper size 18
- setting the paper type 18
- setting the Universal paper size 18
- setting up e-mail 105
- setting up serial printing 81
- shipping the printer 90
- skewed print 125
- Sleep mode
  - configuring 90
- slow printing 113
- SMTP server
  - configuring 105
- solid color or black images 126
- staple cartridge
  - replacing 86
- staple cartridge holder
  - replacing 87
- staple jam in door G 102
- staple jam, clearing
  - door G 102
- statement of volatility 78
- storing
  - supplies 89
- storing print jobs 32
- streaks on prints 128
- supplies
  - conserving 91
  - storing 89
- supplies status
  - checking 82
- supplies, ordering
  - toner cartridges 83
  - waste toner bottle 83
- supply notifications
  - configuring 83
- supported file types 32
- supported flash drives 32
- supported paper sizes 23
- supported paper types 26
- supported paper weights 28

## T

- temperature around the printer 138
- text or images cut off 127
- toner cartridge
  - replacing 84
- toner cartridges
  - ordering 83
- toner darkness
  - adjusting 130

- toner easily rubs off 127
- transparencies
  - loading 20
- tray linking does not work 110
- trays
  - loading 18
- troubleshooting
  - cannot open Embedded Web Server 105
  - FAQ about color printing 131
  - printer is not responding 116
- troubleshooting, print
  - collated printing does not work 109
  - confidential and other held documents do not print 112
  - envelope seals when printing 108
  - incorrect margins 122
  - jammed pages are not reprinted 112
  - job prints from the wrong tray 115
  - job prints on the wrong paper 115
  - paper frequently jams 111
  - print jobs do not print 115
  - slow printing 113
- troubleshooting, print quality
  - blank pages 117
  - crooked print 125
  - dark print 117
  - ghost images appear on prints 119
  - gray or colored background 120
  - horizontal dark lines 121
  - horizontal white lines 122
  - light print 123
  - mottled print and dots 125
  - paper curl 109
  - repeating print defects 126
  - skewed print 125
  - solid color or black images 126
  - text or images cut off 127
  - toner easily rubs off 127
  - uneven print density 128
  - vertical dark lines or streaks appear on prints 128
  - vertical white lines 129
  - white pages 117

## U

- unable to read flash drive
  - troubleshooting, print 106
- understanding the status of the power button and indicator light 11
- uneven print density 128
- Unformatted flash detected 107
- Universal paper size
  - setting 18
- unlinking trays 21
- USB port
  - enabling 107
- using the control panel 11
- using the home screen 12

## V

- verify print jobs 32
  - printing 33
- vertical dark lines on prints 128
- vertical white lines 129
- volatile memory 78
  - erasing 77

## W

- waste toner bottle
  - ordering 83
  - replacing 85
- Wireless menu 57
- wireless network
  - connecting the printer to 80
  - Wi-Fi Protected Setup 80
- wireless networking 80
- Wi-Fi Direct 81
  - printing from a mobile device 30
- Wi-Fi network
  - deactivating 81
- Wi-Fi Protected Setup
  - wireless network 80