



## LCD MONITOR

# TOUCH PANEL SETTINGS TOOL OPERATION MANUAL

Version 1.0

Applicable models (as of March 2014)

PN-L703A/PN-L703B/PN-L603A/PN-L603B/PN-70TA3/PN-70TB3/PN-60TA3/PN-60TB3

(Available models differ according to region.)

# Contents

<b>Introduction</b> .....	<b>3</b>
System Requirements.....	3
<b>Setting up the PC</b> .....	<b>4</b>
Install.....	4
<b>Touch Panel Settings</b> .....	<b>5</b>
How to configure settings.....	5
Calibration.....	6
Properties.....	6
<b>Uninstall</b> .....	<b>8</b>

## Important Information

- This software has been shipped after strict quality control and product inspection. If, however, you find any failure or malfunction, contact your product dealer.
- Please understand that SHARP CORPORATION bears no responsibility for errors made during use by the customer or a third party, nor for any other malfunctions or damage to this software arising during use, except where indemnity liability is recognized under law.
- Transcribing or duplicating part or all of this manual and/or this software without permission from our company is not permitted.
- As a part of our policy of continuous improvement, SHARP reserves the right to make design and specification changes for product improvement without prior notice.
- The contents or details may vary depending on the screen configuration and OS version, etc.
- This manual does not contain basic operating instructions for Windows.

## Trademarks

- Microsoft and Windows are either registered trademarks or trademarks of Microsoft Corporation in the United States and/or other countries.
- Intel, Celeron, and Intel Core 2 Duo are trademarks or registered trademarks of Intel Corporation or its subsidiaries in the U.S.A. and other countries.
- AMD, AMD Sempron, AMD Athlon, and combinations thereof are trademarks of Advanced Micro Devices, Inc.
- All other brand and product names are trademarks or registered trademarks of their respective holders.

# Introduction

This software is used to configure touch action settings in order to perform touch action on a computer connected to an applicable model.

To perform touch action on a computer connected to an applicable model, this software must be installed on the computer.

---

## System Requirements

OS	Windows 7 (32-bit or 64-bit version), Windows 8 (32-bit or 64-bit version), Windows 8.1 (32-bit or 64-bit version)
CPU	Intel Celeron or AMD Sempron 1.6 GHz or faster Intel Core 2 Duo or AMD Athlon II X2 2.8 GHz or faster recommended
Memory	At least 2 GB
Free space on hard drive	At least 100 MB
USB port	USB (2.0 compliant)

### TIPS

- Depending on the application software, touch operation may not be possible (for example, if the application processes mouse and other operations independently).

# Setting up the PC

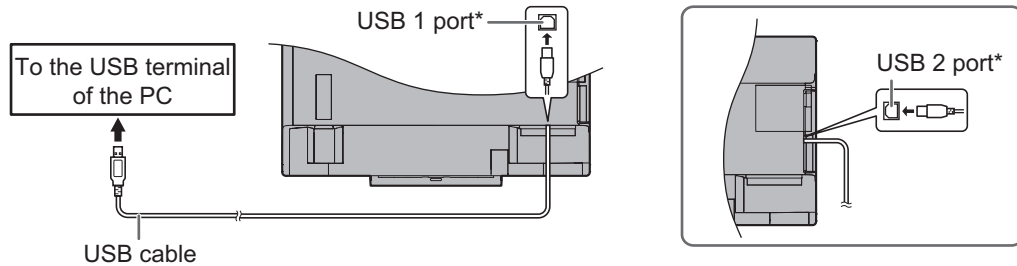
## Install

### ! Caution

- This can only be done by a user with administrator authority.
- If an older version of the touch panel settings tool is installed, remove (uninstall) the old version before installing the touch panel settings tool. (See page 8.)
- Do not touch the touch panel when connecting the USB cable.  
If you touch the touch panel, it will lead to a malfunction. In this case, disconnect and then reconnect the USB cable.

1. Start your PC.
2. Exit all applications that are running.
3. Connect the USB cable.

After it has been connected, the touch panel will be automatically recognized.



- \* To use a touch panel with a computer connected to the bottom, connect to the USB 1 port.  
To use a touch panel with a computer connected to the side, connect to the USB 2 port.  
(Factory setting. Can be changed in TOUCH INPUT SELECT in the SETUP menu.)

4. Insert the supplied CD-ROM into the CD-ROM drive of your PC.
5. Open the CD-ROM drive in "Computer".
6. Double-click the "TouchPanel" folder, and then double-click the "Windows" folder.
7. Double-click "Setup.exe".  
When the "User Account Control" screen appears, click "Yes" (or "Allow").
8. Select the language for installation, and click "Yes".

Follow the on-screen instructions to install the driver.

- If the "Windows Security" screen appears, click "Install" (or "Install this driver software anyway").
- If the "Software Installation" screen appears, click "Continue Anyway".
- If the "SHARP Touch Panel Settings Tool Files in Use" screen appears, click "Continue".

9. When the installation finished screen appears, click "Close".

This completes the installation of the touch panel settings tool.

Each time the PC is started, the touch panel settings tool will start automatically to enable the touch panel to be used. The first time you use the touch panel, perform calibration (position adjustment). (See page 6.)

# Touch Panel Settings

The touch panel settings tool starts automatically. An icon (  ) appears on the taskbar.

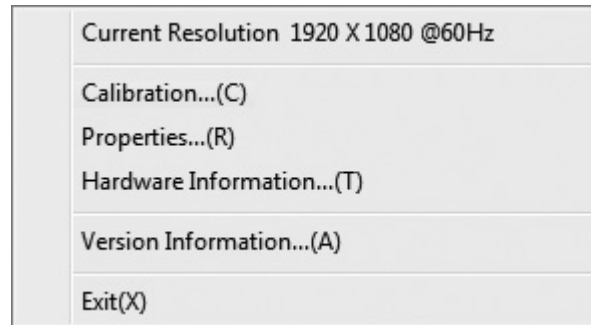
## ! Caution

- When using the touch panel, set the “SIZE” of the monitor to “WIDE”, “NORMAL”, or “Dot by Dot”.  
The touch panel cannot be used when the “SIZE” is set to “ZOOM1” or “ZOOM2”.

---

## How to configure settings

1. Click the touch panel settings tool icon (  ) on the taskbar.
2. Click a menu to change a setting.



- Current Resolution : The current screen resolution appears.
- Calibration : See page 6.
- Properties : See page 6.
- Hardware Information : Select to view operating conditions. (For service technicians.)
- Version Information : Shows the version of this software.
- Exit : Exit this software.

## Calibration

Calibration is used to perform position alignment so that the mouse cursor moves to the correct position when the screen is touched.

### Adjust

Calibration can be performed. Follow the on-screen instructions.

### Reset

The calibration settings will be deleted.

## Properties

Settings for the touch action can be configured.

### ■ Double Click Range Setting (Mouse Mode)

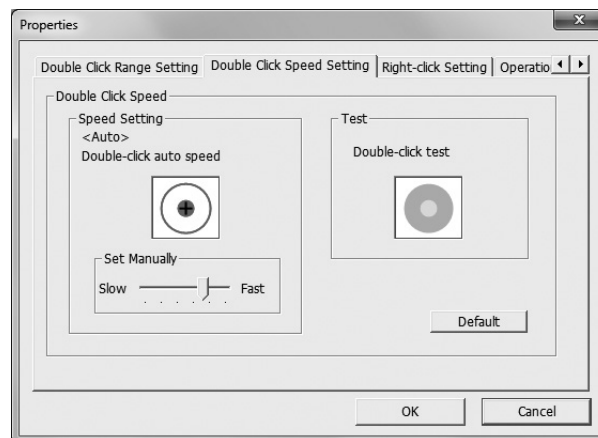
Set how much the position can shift between the first touch and the second touch and still be recognized as a double-click. To return the setting to the default setting, click "Default".

#### TIPS

- Changing this setting also changes the effective double-click range when the mouse is used.

### ■ Double Click Speed Setting (Mouse Mode)

Set the time that is recognized as a double-click. When a second touch occurs within the set time after the first touch, it is recognized as a double-click.



### Speed Setting (Auto)

The inside of the frame can be touched twice (double-clicked) to set the speed automatically based on the interval between the touches.

### Set Manually

The speed can be set manually from "Slow" (about 1 second) to "Fast" (about 0.3 seconds).

### Test

When the inside of the frame is double-clicked by touching it twice, the screen changes. If the screen does not change, repeat the setting.

### Default

Click to restore the default setting.

#### TIPS

- Changing this setting also changes the mouse double-click speed of Windows.
- Depending on the application software, changing the setting may not have any effect (for example, if the setting is set separately in the application).

### ■Right-click Setting (Mouse Mode)

#### **Recognize press and hold as right click**

Set whether touching the screen continuously is used as a mouse right-click.

#### **Press and Hold Duration**

Set the time that is recognized as a mouse right-click.

#### **Press and Hold Effective Range**

Set the effective range for determination that the screen is being touched continuously.

### ■Operation Setting

#### **Touch Operation Mode**


Select the touch mode (Mouse Mode or Multi-Touch Mode).

- Mouse Mode : Touch information is output as mouse information.
- Multi-Touch Mode : Touch information is output as digitizer information.

# Uninstall

## ! Caution

- This can only be done by a user with administrator authority.

- 1. Click the touch panel settings tool icon (  ) on the taskbar and click “Exit”.**
  - If a confirmation window appears, click “Yes”.
- 2. Disconnect the USB cable.**
- 3. Select “Control Panel” from the “Start” menu.**
- 4. Click “Uninstall a program”.**
  - If you are using icon view (Classic View), double-click “Programs and Features”.
- 5. Select “SHARP Touch Panel Settings Tool” and click “Uninstall”.**
  - Follow the on-screen instructions.
  - When the “User Account Control” screen appears, click “Yes” (or “Allow”).
  - When the “The following applications should be closed before continuing the install” message appears, click “OK”.

This completes the uninstallation.



**SHARP**<sup>®</sup>  
SHARP CORPORATION