



## LCD MONITOR

# TOUCH PEN UTILITY OPERATION MANUAL

Version 2.0

Applicable models (as of December 2015)

PN-60TA3\*/PN-60TB3/PN-60TW3/PN-70TA3\*/PN-70TB3/PN-70TW3/PN-80TC3/  
PN-L603A\*/PN-L603B/PN-L603W/PN-L703A\*/PN-L703B/PN-L703W/PN-L803C/  
PN-ZL01/PN-ZL02/PN-ZL03

\* Excluding WHITEBOARD mode

(Available models differ according to region.)

# Contents

<b>Introduction</b> .....	<b>3</b>
System Requirements .....	3
<b>Setting up the PC</b> .....	<b>4</b>
Install .....	4
<b>Showing active pen information</b> .....	<b>5</b>
<b>Active pen settings</b> .....	<b>6</b>
How to configure settings .....	6
Registering/canceling an active pen .....	7
Advanced .....	7
<b>Operation settings</b> .....	<b>9</b>
Input mode .....	9
<b>Uninstall</b> .....	<b>10</b>

## Important Information

- This software has been shipped after strict quality control and product inspection. If, however, you find any failure or malfunction, contact your product dealer.
- Please understand that SHARP CORPORATION bears no responsibility for errors made during use by the customer or a third party, nor for any other malfunctions or damage to this software arising during use, except where indemnity liability is recognized under law.
- Transcribing or duplicating part or all of this manual and/or this software without permission from our company is not permitted.
- As a part of our policy of continuous improvement, SHARP reserves the right to make design and specification changes for product improvement without prior notice.
- The contents or details may vary depending on the screen configuration and OS version, etc.
- This manual does not contain basic operating instructions for Windows.

## Trademarks

- Microsoft and Windows are either registered trademarks or trademarks of Microsoft Corporation in the United States and/or other countries.
- Intel, Celeron, and Intel Core 2 Duo are trademarks or registered trademarks of Intel Corporation or its subsidiaries in the U.S.A. and other countries.
- AMD, AMD Sempron, AMD Athlon, and combinations thereof are trademarks of Advanced Micro Devices, Inc.
- All other brand and product names are trademarks or registered trademarks of their respective holders.

# Introduction

This software enables a touch pen to be used on a computer connected to the video input terminal of an applicable model. To use a touch pen with a computer, this software must be installed on the computer. The touch pen (3 button pen) that is included with an applicable model is referred to as “active pen” in this manual.

---

## System Requirements

OS	Windows 7 (32-bit or 64-bit version), Windows 8 (32-bit or 64-bit version), Windows 8.1 (32-bit or 64-bit version), Windows 10 (32-bit or 64-bit version)
CPU	Intel Celeron or AMD Sempron 1.6 GHz or faster Intel Core 2 Duo or AMD Athlon II X2 2.8 GHz or faster recommended
Memory	At least 2 GB
Free space on hard drive	At least 100 MB
USB port	USB (2.0 compliant)

### TIPS

- Depending on the application software, active pen operation may not be possible (for example, if the application processes mouse and other operations independently).

# Setting up the PC

## Install

### ! Caution

- Connect the touch panel, and then install the Touch Panel Settings Tool.
- Insert the touch pen adapter into the LCD monitor before installing the Touch Pen Utility.
- If an older version of the Touch Pen Utility is installed, remove (uninstall) the old version before installing the Touch Pen Utility. (See page 10.)
- This can only be done by a user with administrator authority.

1. **Start your PC.**
2. **Exit all applications that are running.**
3. **Insert the supplied CD-ROM into the CD-ROM drive of your PC.**
4. **Open the CD-ROM drive in “Computer”.**
5. **Double-click the “TouchPen” folder, and then double-click the “Windows” folder.**
6. **Double-click “Setup.exe”.**

When the “User Account Control” screen appears, click “Yes” (or “Allow”).

7. **Select the language for installation, and click “Next”.**

For the remainder of the procedure, follow the instructions shown on the screen.

- If the “Windows Security” screen appears, click “Install” (or “Install this driver software anyway”).
- If the “Software Installation” screen appears, click “Continue Anyway”.
- If the “SHARP Touch Pen Utility Files in Use” screen appears, click “Continue”.

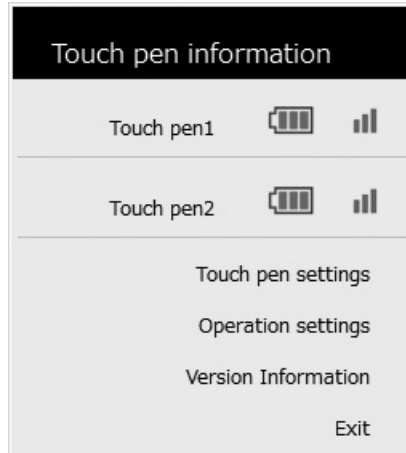
This completes the installation of the Touch Pen Utility.

Each time the computer is started, the Touch Pen Utility starts automatically to enable the active pen to be used.

# Showing active pen information

The Touch Pen Utility starts automatically.  
You can view information on the active pen that is being used.

1. Click the Touch Pen Utility icon (  ) on the taskbar.



- Touch pen information : Shows the registration number, the battery level and the signal strength of the active pen being used.
- Touch pen settings : See page 6.
- Operation settings : See page 9.
- Version Information : Shows the version of this software.
- Exit : Exit this software.

## TIPS


- If an active pen is not used for 1 minute, it will enter sleep mode. When the active pen is used, it will automatically wake.
- When an active pen is in sleep mode, the battery level and signal strength will not be shown correctly. After the pen wakes, it will take time for the battery level and signal strength to be shown correctly.
- When an active pen is in sleep mode, the active pen settings cannot be configured.
- Do not continuously press the tip or function button of an active pen. It may not be possible to configure the touch pen settings.

# Active pen settings

## How to configure settings

Settings that can be changed are as follows.

- Registering/canceling an active pen: See page 7.
- Advanced: See page 7.
  - Touch pen setting: See page 7.
  - Function buttons: See page 8.
  - Test Information: Shows the active pen function buttons, pen pressure levels, and other information. (For service technicians.)

1. Click the Touch Pen Utility icon (  ) on the taskbar.
2. Click [Touch pen settings].
3. Change the settings. (See page 7.)



## Registering/canceling an active pen

To use the optional active pen, you must register the active pen (pairing). You can also cancel the registration of an active pen.

### ■ Registering an active pen

See the operation manual for the LCD monitor.

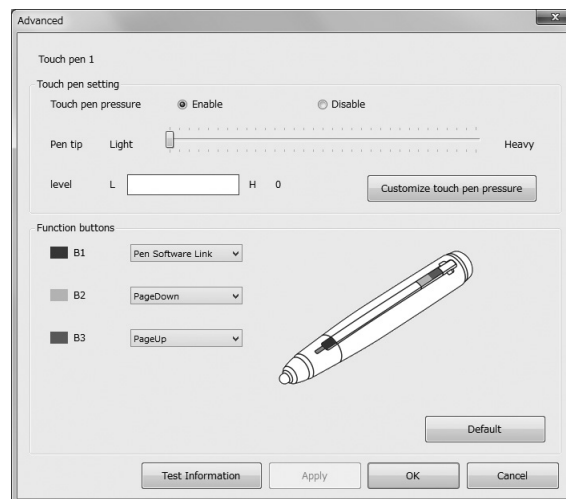
### ■ Canceling the registration of an active pen

1. Click the active pen you want to cancel in the touch pen settings screen.
2. Click [Release].

## Advanced

1. Click the active pen whose settings you want to change in the touch pen settings screen.
2. Click [Advanced].

### ■ Touch pen setting



### Touch pen pressure

Set whether touch pen pressure mode is used for the active pen.

### Pen tip

You can set the touch pen pressure at which the touch panel recognizes the pen.

When the input mode is “Pen Digitizer”, set the pressure to the lightest setting (to the leftmost position).

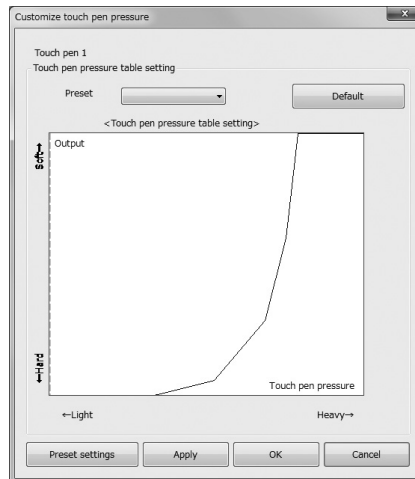
### level

Shows the strength of the touch pen pressure.

## Active pen settings

### ■Customize touch pen pressure

You can adjust the pen pressure in the Pen Software.



### Touch pen pressure table setting

You can manually adjust the touch pen pressure and stroke thickness.

#### Preset

The touch pen pressure table can be selected and set from the presets.

#### Preset settings

The set touch pen pressure table can be assigned a name and saved. (Up to 10.)  
In addition, saved presets can be deleted.

### ■Function buttons

Functions can be assigned to the function buttons of an active pen.

Functions that can be set are as follows.

Function type	Function
OS	Invalid, Right mouse click, Undo, Redo, PageUP, PageDown, ↑ (cursor up), ↓ (cursor down), Eraser* <sup>1</sup>
Pen Software	Pen Software Link* <sup>2</sup>

\*1 Can be used when the input mode is "Pen Digitizer". (See page 9.)

Can be used as the eraser for the digitizer pen in Windows.

\*2 Cannot be used when the input mode is "Pen Digitizer".



# Operation settings

## Input mode

Set the action for touch by finger or active pen.

It is normally recommended that you use "Standard".


- Standard : The touch action takes place when the screen is touched by active pen or finger.
- Pen : The touch action takes place only when the screen is touched by active pen. The touch action does not take place when the screen is touched by finger.
- Pen Digitizer : You can use an active pen as a digitizer pen in Windows.

### TIPS

- Set to "Standard" to use Simultaneous Drawing or Eraser in the Pen Software.

# Uninstall

## ! Caution

- This can only be done by a user with administrator authority.
- 1. Click the Touch Pen Utility icon (  ) on the taskbar and click “Exit”.**
    - If a confirmation window appears, click “Yes”.
  - 2. Remove the touch pen adapter.**
  - 3. Select “Control Panel” from the “Start” menu.**
  - 4. Click “Uninstall a program”.**
    - If you are using icon view, click “Programs and Features”.
  - 5. Select “SHARP Touch pen utility” and click “Uninstall”.**
    - Follow the on-screen instructions.
    - When the “User Account Control” screen appears, click “Yes” (or “Allow”).
  - 6. If a screen appears prompting you to restart your PC, restart your PC.**

This completes the uninstallation.

**SHARP**<sup>®</sup>  
SHARP CORPORATION