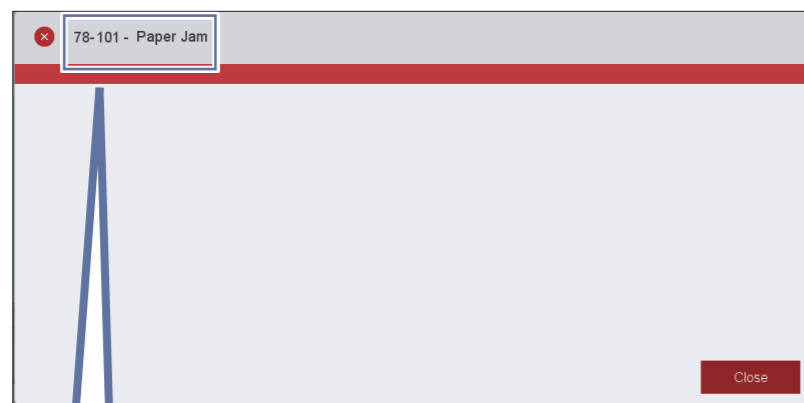


Set an Air Assist Profile

Digital Full Color Production Printer

Check an error code displayed if Misfeed/Multifeed has occurred at the Air Trays and Long Paper Tray.

Feeding issue will be resolved by setting an Air Assist profile corresponding to a displayed error code.



Misfeed->p.2

- 78-101
- 78-151
- 178-101
- 178-151

Multifeed->p.3 or p.4

- 78-131
- 78-132
- 77-131
- 77-132

Make sure the followings before you set an Air Assist profile.

- If the paper size, type and weight are correctly set
- If paper is correctly set at the Paper Tray

Note

Adjust a guide correctly to match with a paper size.

- Use paper in good condition

Paper Curl Correction is needed if paper is curled.

Loosening paper well is needed if the cutting surfaces of paper have burrs (cutting surfaces of paper).

Notice when setting

- Blower B

Power is strengthened step by step in the order of Off, Low, Medium, and High.

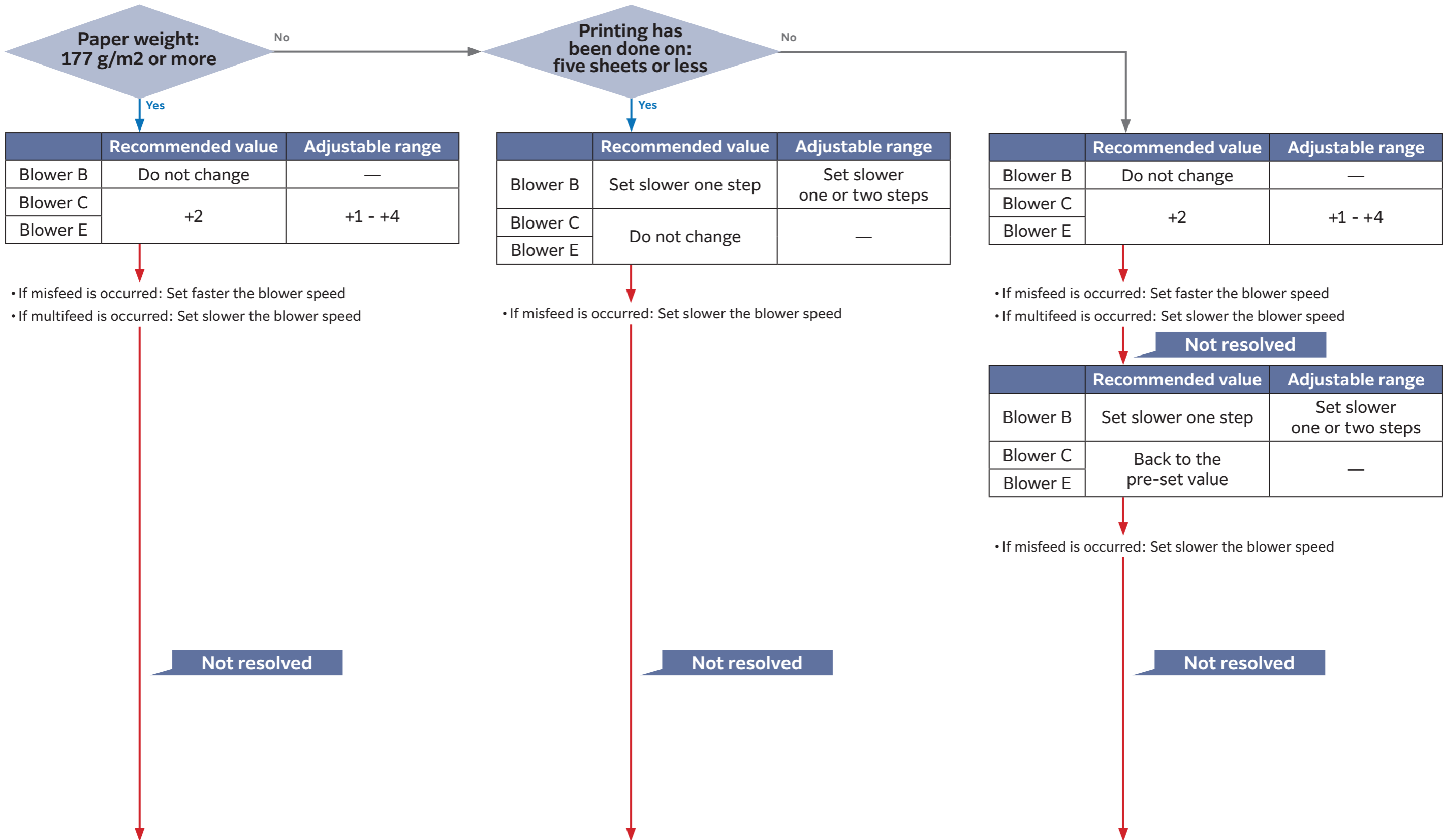
- Pre-set value [Off]: Do not change the setting
- Pre-set value [Low]: Do not change it to "Off" if instructed to "slow down"

- Blower C and Blower E

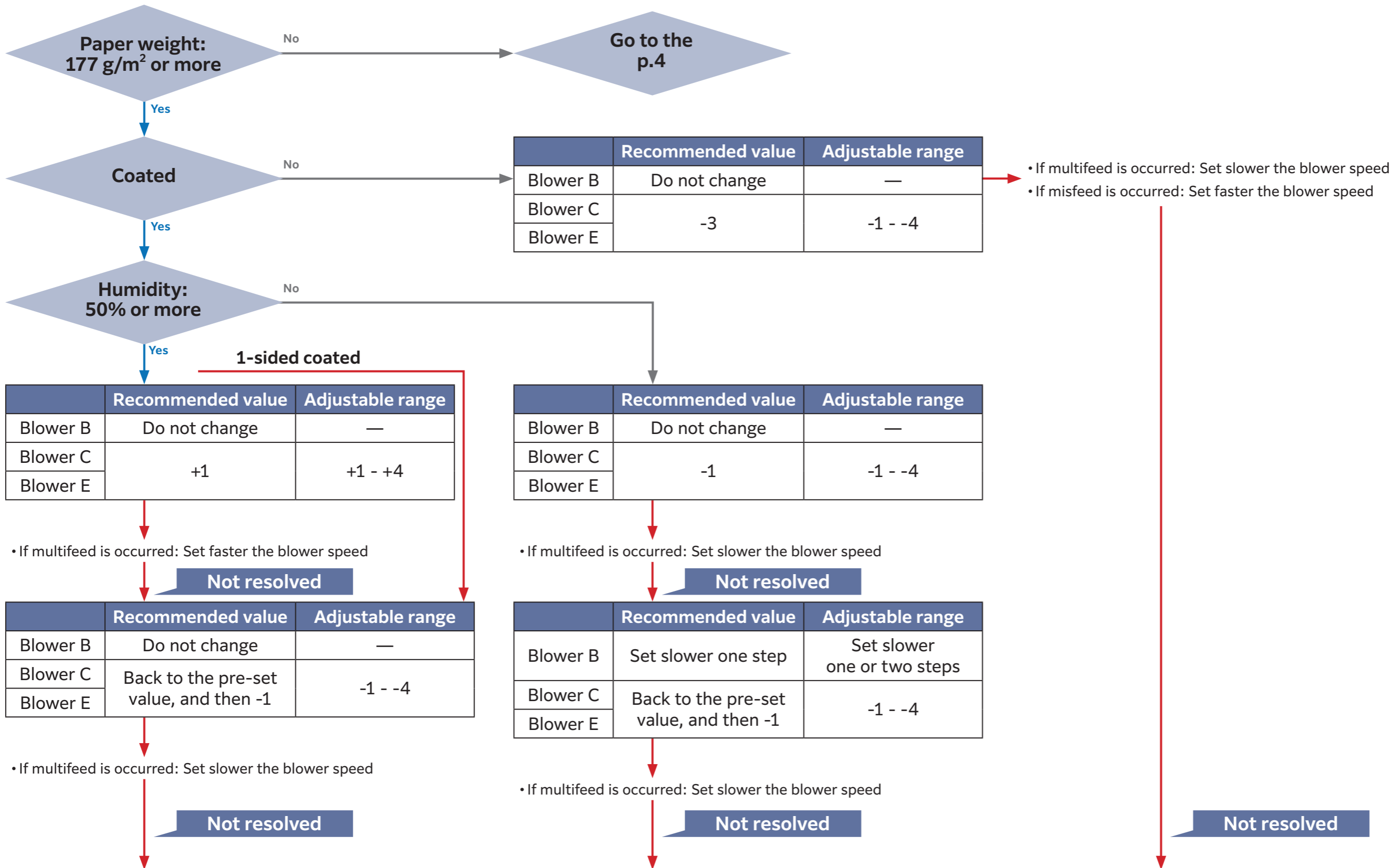
Check a current value, and then increase or decrease a value instructed in a table. (e.g. if the current setting is 5 and the value in the table is +2, change it to 7)

- Pre-set value [1]: Fan is not operated. Do not change the setting.
- Pre-set value [2]: Do not change it to "1" if instructed to "slow down"

Misfeed

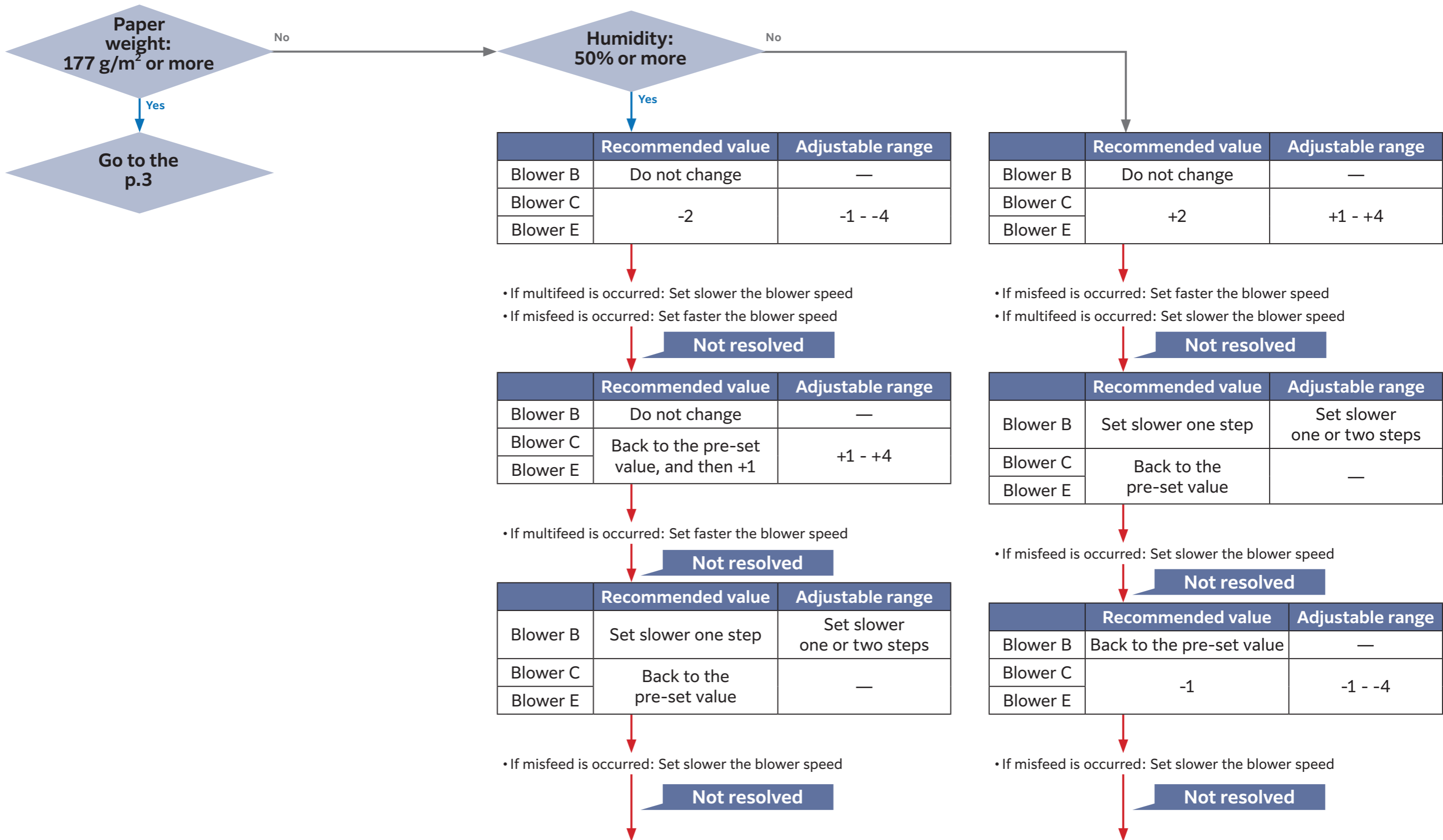


Multifeed



Contact your dealer or nearest SHARP Service Department.

Multifeed



Contact your dealer or nearest SHARP Service Department.

SHARP
SHARP CORPORATION